



Public Works and  
Government Services  
Canada

Travaux publics et  
Services gouvernementaux  
Canada

No of  
Page/ \_\_\_\_\_  
N° de page

**RETURN BIDS TO:**  
**RETOURNER LES SOUMISSIONS À:**

[cfia.bidreceipt-receptiondesoumission.acia@canada.ca](mailto:cfia.bidreceipt-receptiondesoumission.acia@canada.ca)

**STANDARD REQUEST FOR BID**  
**INVITATION À SOUMISSIONNER - STANDARD**

The Bidder offers to provide to Canada the goods, services or both listed in the bid solicitation in accordance with the conditions set out in the bid solicitation and the prices set out in the bid.

This bid solicitation is issued in accordance with the conditions of the Supply Arrangement E60PQ-140003/PQ.

Le soumissionnaire offre de fournir au Canada les biens, services ou les deux énumérés dans la demande de soumissions aux conditions prévues dans la demande de soumissions et aux prix indiqués dans la soumission.

Cette demande de soumissions est émise conformément aux conditions de l'arrangement en matière d'approvisionnement E60PQ-140003/PQ.

Solicitation No. - N° de la demande <b>2023-01154</b>	Amendment No. - N° de modification
Supplier SA No. - N° de l'AMA de fournisseur : <b>E60PQ-140003/___</b>	

<b>Solicitation closes – La demande prend fin :</b>	File No. - N° de dossier
<b>at – à 2PM EDT</b>	<b>2023-01154</b>
<b>on – le May 29<sup>th</sup>, 2023</b>	

**Date of Solicitation – Date de la demande**

**May 17<sup>th</sup>, 2023**

**Address inquiries to – Adresser toute demande de renseignement à :**

**Catherine Clairoux**  
Senior Procurement and Contracting Officer  
Contracting & Procurement Policy Division  
59 Camelot Dr. Nepean, ON K2G 5W6  
(343) 596-9265  
[catherine.clairoux@inspection.gc.ca](mailto:catherine.clairoux@inspection.gc.ca)

**Destination**

**Canadian Food Inspection Agency (CFIA)**  
8950 Blvd. de la Grande-Allée, Suite 104  
Mirabel, QC J7J 0T3

**Instructions:**

**Municipal taxes are not applicable.**

**Unless otherwise specified in the bid solicitation, all prices quoted must be net prices in Canadian funds including Canadian customs duties, excise taxes, must be FOB, including all delivery charges to destination(s) as indicated. The amount for Applicable Taxes is to be shown as a separate item.**

**Instructions:**

**Les taxes municipales ne s'appliquent pas.**

**Sauf indication contraire dans la demande de soumissions, tous les prix indiqués doivent être des prix nets, en dollars canadiens, comprenant les droits de douane canadiens, la taxe d'accise et doivent être FAB, y compris tous frais de livraison à la (aux) destination(s) indiqué(s). Le montant des taxes applicables doit apparaître séparément.**

**Supplier Name and Address – Nom et adresse du fournisseur**

Telephone No. - N° de téléphone

Facsimile No. - N° de télécopieur

**Name and title of person authorized to sign on behalf of supplier (type or print)**

**Nom et titre de la personne autorisée à signer au nom du fournisseur (caractère d'impression)**

Signature : \_\_\_\_\_ Date : \_\_\_\_\_



## TABLE OF CONTENTS

This bid solicitation cancels and supersedes previous bid solicitation number 2023-01154 dated April 25<sup>th</sup>, 2023 with a closing on May 5<sup>th</sup>, 2023 at 2pm EDT. A debriefing or feedback session will be provided upon request to bidders / offerors / suppliers who bid on the previous solicitation.

**Section 1** – Invitation and Instructions to Bidders

**Section 2** – Resulting Contract including a list of required goods and services

### **SECTION 1 – INVITATION AND INSTRUCTIONS TO BIDDERS**

**1. For Tier 2 and Tier 3 only** Is this a Manufacturer Product Specific Procurement? **No.**

**2.  Competitive**

A bid must comply with the requirements of the bid solicitation and meet all mandatory technical evaluation criteria to be declared responsive. The responsive bid with the lowest evaluated price will be recommended for award of a contract. For Competitive Requirements when only one bid is received:

The Bidder must provide the following information AFTER bid closing, if requested to do so by Canada:

- One or more of the following price justifications:
  1. a current published price list indicating the percentage discount available to Canada; or
  2. a copy of paid invoices for the like quality and quantity of the goods, services or both sold to other customers; or
  3. a price breakdown showing the cost of direct labour, direct materials, purchased items, engineering and plant overheads, general and administrative overhead, transportation, etc., and profit; or
  4. any other supporting documentation as requested by Canada.

**3.  PSIB Conditional Reserved Bidding under the Federal Government Procurement Strategy for Indigenous Business (PSIB):**

“Indigenous Business” or “Indigenous Businesses” mean an entity or entities that have duly completed the Attachment 1 of Annex C and submitted it with their bid.

This is a competitive bid solicitation however, this solicitation will be reserved for Indigenous Businesses if both of the following conditions are met:

- bids from two (2) or more Indigenous Businesses are responsive with the mandatory requirements of the solicitation including any minimum points required for any point-rated criteria, and
- bids from two (2) or more Indigenous Businesses are, in the evaluation team’s opinion, not affiliated within the meaning used in the Competition Act, R.S.C., 1985, c. C-34.

If the above conditions are not met, the procurement will remain open for competition among all selected suppliers.

**4. Terms of the RFB:**

This RFB is issued pursuant to the Supplier’s Furniture for Workspaces Supply Arrangement (SA) that forms part of the series of SAs issued by PWGSC with the number E60PQ-140003/PQ. The terms and conditions in the Supplier’s SA apply to and form part of this RFB. Bidders who submit a bid agree to be bound by those terms and conditions as well as the terms and conditions in this RFB.

The WTCM is the Workspaces Terms and Conditions Manual that contains all terms and conditions in full text that form part of individual RFBs under this SA.

The Bidder must provide the following information WITH the bid:

- The information requested by Canada in Annex A herein, and;
- Attachment 1 of Annex C – PSIB Certifications, if applicable.

The Bidder must also provide their information at Table 9 – Bidder’s Authorized Representative.

**5. Security Requirement:**

There are no security requirements included in this Contract.

**6. Bid Evaluation**

An evaluation team composed of representatives of Canada will evaluate the bids.

<b>RFB Issued by:</b>	
Identified User’s (IU) Canadian Food Inspection Agency (CFIA)’s Contact and Contracting Authority for this RFB:	<p><b>Catherine Clairoux</b>                  Senior Procurement and Contracting Officer                  Contracting &amp; Procurement Policy Division                  59 Camelot Dr. Nepean, ON K2G 5W6                  (343) 596-9265  <a href="mailto:catherine.clairoux@inspection.gc.ca">catherine.clairoux@inspection.gc.ca</a></p>
<b>RFB Closing - Submit Bid:</b> Bids must be submitted on the date and at the time indicated below.	
By no later than date and time:	<p><b>May 29<sup>th</sup>, 2023</b>  <b>2PM Eastern Daylight Savings Time (EDT)</b></p>
<b>To the Bid Receiving e-mail address:</b>	<p><a href="mailto:cfia.bidreceipt-receptiondesoumission.acia@canada.ca">cfia.bidreceipt-receptiondesoumission.acia@canada.ca</a></p> <p>The Bid Receiving Email Address is Solely for Delivery of Bids: for the sole purpose of bid submission. No other communications are to be forwarded to this email address.</p>
<b>RFB Enquiries:</b>	
Bidders may submit enquires about the RFB to the Contracting Authority five (5) business days prior to the RFB closing date. Enquiries received after the timeline indicated may not be answered.	<b>Five (5) business days</b>

**SECTION 2 - RESULTING CONTRACT CLAUSES**

	<b>Terms and Conditions of the Contract</b>	
1.	The terms and conditions of Parts 6B and 6C of the Supplier's SA within the series E60PQ-140003/PQ apply to and form part of this Contract.	
2.	<b>Security Requirement:</b>	
2.1	The applicable security requirements and terms are set out below:	
	c.	<input checked="" type="checkbox"/> <b>There is no security requirement associated with this contract.</b>
3.	<b>Requirement</b>	
3.1	The Contractor must perform the Work listed in Annex A herein.	
4.	<b>Authorities</b>	
4.1	<p><b>Contracting Authority (IU)</b></p> <p><b>Catherine Clairoux</b>          Senior Procurement and Contracting Officer          Canadian Food Inspection Agency (CFIA)          Contracting &amp; Procurement Policy Division          59 Camelot Dr. Nepean, ON K2G 5W6          (343) 596-9265  <a href="mailto:catherine.clairoux@inspection.gc.ca">catherine.clairoux@inspection.gc.ca</a></p>	
4.2	<p><b>Project Authority [To be completed at contract award]</b></p> <p><b>Name</b>          Title          Department          Address          Telephone Number          Email Address</p> <p>The Project Authority (PA) is the representative of the department or agency for whom the Work is being carried out under the Contract including the provision to approve the authority to proceed for delivery and installation and is responsible for all matters concerning the technical content of the Work under the Contract.</p> <p>In addition, the PA is also responsible for ensuring that the Supplier's employees and subcontractors requiring access to the site adhere to the allocated time for the Supplier to access the site to deliver and install the furniture in accordance with the master schedule held by the General Contractor (a representative of Canada or a service provider(s) under contract with the Government of Canada).</p>	
4.3	<p><b>Contractor's Representative</b></p> <p>As set out in Table 9 below.</p>	
5.	<p><b>Method of Payment</b></p> <p>The checked box applies. If the Contractor's SA indicates acceptance for payment by credit card, that method may be used in conjunction with the following.</p> <p><input checked="" type="checkbox"/> <b>Single Payment</b></p>	
6.	<p><b>Invoicing</b></p> <p>Further to the Invoicing terms of the WTCM document, the Contractor will deliver the original and one copy of the invoice to the following address for certification and payment:          Name of the organization, contact and address: <a href="#">[To be completed at contract award]</a></p>	
7.	<p><b>SACC Manual Clauses</b></p> <p><a href="#">2020 (2022-12-01)</a> General Conditions</p>	

## ANNEX A – REQUIREMENT and BASIS OF PAYMENT

### 1. Category Selection

#### Combined Categories Rule:

For reasons of compatibility, the following categories will be combined for evaluation and contract award purposes:

The rule only applies to the categories below that are checked. The unchecked categories will be evaluated separately and may be awarded to multiple suppliers;

- Category 1**
- Category 2**
- Category 5**

#### Design Upgrade Rule:

The IU may exercise an option to upgrade products up to 20% of each Category product total before Applicable Taxes after contract award.

The Design Upgrade amount is used at the discretion of the Project Authority (PA) **prior to the manufacturing/ordering of the products**, the PA will provide the Contractor with a written notice of Canada's Design Upgrade choices for each of the product(s) to be upgraded. The Contractor will provide the pricing of the upgraded product(s) to a maximum of 20% of each Category Contract Price of Table 8. The Contracting Authority will issue an amendment to the contract with the Design Upgrades and pricing.

The Supplier certifies that all the Design Upgraded products offered will conform to all specifications and meet the testing requirements detailed in the Specifications of the Supply Arrangement.

Design Upgrade: is the process of replacing a product with a more innovative or enhanced version of the same product.

#### NSA:

NSA products can be incorporated in the RFB and must not exceed 30% of the firm quantity by category. NSA items must be added to the category that is most closely related and must be generic.

The requirement includes the following categories of work :

a. **Category 1** – Interconnecting Panels and Freestanding Systems

- Category 1a** – Interconnecting Panels (Refer to Annex C)
- Category 1b** – Supporting components and freestanding furniture

**RULE:** Metal Storage – Identified Users may procure metal storage products forming part of Category 1 when the metal storage products will be part of a requirement for a workstation(s)/work point(s). If this rule does not apply, Category 3 must be used for the metal storage products forming part of this category.

- b.  **Category 2** – Freestanding Height Adjustable Desk / Table Products
- c.  **Category 5** – Ancillary and Lighting Products
- d.  **NSA Products** – Category : Benches

## 2. Products and Pricing Tables

**Site Inspection Date:** To be coordinated with the Project Authority after contract award. (Refer to Annex A article 4 of the SA for Site Inspection and Documentation instructions.)

**INSTRUCTIONS TO BIDDERS:** Bidders are to complete Sections B of the tables identified by the IU in this article as well as Tables 8 and 9. **Bidders must provide a complete product offering for each category, or CAT 6 sub-divide they wish to submit a bid in order to be compliant.**

\*\*Refer to article 6A.7 for instructions on how to submit products that are not approved in product listing.\*\*  
In a resulting contract, the term “Bid” means the Supplier’s commitment, the term “Bidder” means “Contractor”.

Table 1 – Product Table							
Section A - IU REQUIREMENT					Section B – SUPPLIER’S BID		
#	GoCUID	Description of Product <i>(Additional product details may be inserted, if required as per 6B.4.1 of SA)</i>	QTY	** Provide additional Info. Yes/No	Supplier Part Number	Firm Unit Price \$	Extended Total [Qty x Price] \$
<b>Category 1A – General : Workstations (2) in SPACE 05</b> (Refer to Annex C and Floor Plans)							
1	General	End of Run Power Pole, White 30” Base Height, 96” Upper Height	2	Yes		\$	\$
2	General	Outlet Cover Cap, Grey	4	Yes		\$	\$
3	General	Power Harness, 48” Long 8-Wire Isolated Ground	6	Yes		\$	\$
4	General	Ceiling Feed, 120” Long 8-Wire Isolated Ground	2	Yes		\$	\$
5	General	Power Box, Single Length 8-Wire Isolated Ground Standard Mounting Bracket	6	Yes		\$	\$
6	General	Receptacle Outlet, Standard 15 Amp Single Outlet, Circuit 1 Grey Coordinate	2	Yes		\$	\$
7	General	Receptacle Outlet, Standard 15 Amp Single Outlet, Circuit 3 (use with 8T) Grey Coordinate	2	Yes		\$	\$
8	General	Receptacle Outlet, Standard 15 Amp Single Outlet, Circuit 2 Grey Coordinate	2	Yes		\$	\$
9	General	Two-Way Connector 90 Degree 36” Height, White Finish Wide Gasket	2	Yes		\$	\$
10	General	Acoustic Power Comm. Element Power & Comm. H 15” x W 24” Standard Width, Grey	4	Yes		\$	\$
11	General	Acoustic Power Comm. Element Power & Comm. H 30” x W 24” Standard Width, Grey	2	Yes		\$	\$
12	General	Acoustic Element, Standard Width H 30” x W 24”	2	Yes		\$	\$
13	General	Acoustic Element, Standard Width H 30” x W 24”	2	Yes		\$	\$
14	General	Conventional Panel – Segmented H 36” x W 24”, Wide Gasket Bare Frame in Matte White	2	Yes		\$	\$

15	General	Conventional Panel – Segmented H 36” x W 24”, Wide Gasket Bare Frame in Matte White	2	Yes		\$	\$
16	General	Panel End Trim, Wide Gasket H 36”, Bare Frame in Matte White	4	Yes		\$	\$
<b>Category 1B – Free Standing Systems (E) : Workstations (2) in SPACE 05</b>							
17	1bFFHREC24L60 WNOLNY	C-Leg Standard <b>Type</b> : Fixed Height Work Surfaces <b>Shape</b> : Rectangular W24 x L60 x H29 <b>Panels</b> : Laminate, Matte White	4	Yes		\$	\$
18	1bFFHREC24L60 WNOLNY	Modesty Panel – Laminate <b>Type</b> : Fixed Height Work Surfaces <b>Shape</b> : Rectangular W24 x L60 x H29 <b>Panels</b> : Laminate, Matte White	2	Yes		\$	\$
19	1bFFHREC24L60 WNOLNY	Rectangular Work surface <b>Type</b> : Fixed Height Work Surfaces <b>Shape</b> : Rectangular W24 x L60 x H29 <b>Panels</b> : Laminate, Matte White	2	Yes		\$	\$
20	1bFFHREC24L60 WNOLNY	Cable Tray W12” <b>Type</b> : Fixed Height Work Surfaces <b>Shape</b> : Rectangular W24 x L60 x H29 <b>Panels</b> : Laminate, Matte White	2	Yes		\$	\$
21	1bFFHREC24L60 WNOLNY	Wrap Around Cable Manager <b>Type</b> : Fixed Height Work Surfaces <b>Height</b> : Adjustable Table 52” <b>Finish</b> : Laminate Grey	2	Yes		\$	\$
22	1bCPSXXSXXL48 XFANNN	Infinity Desk Edge Screen, L48” <b>Type</b> : Privacy Screen <b>Support</b> : Work Surface Mounted <b>Material</b> : Fabric	2	Yes		\$	\$
23	1bCPSXXNXXL24 XFRNNN	Panel Add-On Screen L24” <b>Type</b> : Privacy Screen <b>Support</b> : Panel Mounted <b>Material</b> : Acrylic / Glass Frosted	4	Yes		\$	\$
24	1bSPBMCAL1518 XXYKXX	Rolling Pedestal, Mobile Style <b>Type</b> : Pedestals Box / File W15 x D18 Casters Support, Laminate Material <b>Locks</b> : Keyed	2	Yes		\$	\$
<b>Category 2 – HA Tables : Workstations (2) in SPACE 05</b>							
25	2WSSREXXL30L 48BELXX	Die Cast Grommet, Square <b>Type</b> : Sit Stand Electric <b>Shape</b> : Rectangular, Laminate <b>Size</b> : W 30 x L 48 x H 23 to 48.7	2	Yes		\$	\$
26	2WSSREXXL30L 48BELXX	hiSpace Basic HA FS Comp Table <b>Type</b> : Sit Stand Electric <b>Shape</b> : Rectangular, Laminate <b>Size</b> : W 30 x L 48 x H 23 to 48.7	2	Yes		\$	\$
27	2WSSREXXL30L 48BELXX	Height Adjustable Table <b>Type</b> : Sit Stand Electric <b>Shape</b> : Rectangular, Laminate <b>Size</b> : W 30 x L 48 x H 23 to 48.7	2	Yes		\$	\$
<b>Category 5 – Ancillary and Lighting Products : Workstations (2) in SPACE 05</b>							
28	5MOADUARMCL PMTXXXXXX	<b>Product</b> : Monitor Arms <b>Options</b> : Dual Arm, Clamp Mount	2	Yes		\$	\$
29	5PMOWKSMTAC USBXXXXXX	<b>Product</b> : Power Module <b>Option</b> : Work Surface Mounted <b>Option</b> : AC and USB Power	2	Yes		\$	\$
						<b>Product Total for SPACE 05</b>	\$

Category 1A – General : Zone 106 - 108 (Refer to Annex C and Floor Plans)							
30	General	Power Pole L96" Corner Mounting, Matte White Finish	1	Yes		\$	\$
31	General	Outlet Cover Cap Grey Coordinate	2	Yes		\$	\$
32	General	Power Harness, L72" 8-Wire Isolated Ground	2	Yes		\$	\$
33	General	Ceiling Feed L120" 8-Wire Isolated Ground	1	Yes		\$	\$
34	General	Power Box, Single Length Standard Mounting Bracket 8-Wire Isolated Ground	4	Yes		\$	\$
35	General	Receptacle Outlet, Standard 15 Amp Single Outlet, Circuit 2 Grey Coordinate	2	Yes		\$	\$
36	General	Receptacle Outlet, Standard 15 Amp Single Outlet, Circuit 1 Grey Coordinate	2	Yes		\$	\$
37	General	Two-Way Connector, 90 Degrees H 36", Wide Casket, Matte White	2	Yes		\$	\$
38	General	Acoustic Power Comm. Element Power & Comm. H30" x W24" Standard Width, Grey	4	Yes		\$	\$
39	General	Acoustic Element, Standard Width H 30" x W 24"	2	Yes		\$	\$
40	General	Acoustic Element, Standard Width H 30" x W 36"	8	Yes		\$	\$
41	General	Conventional Panel – Segmented H 36" x W 24", Wide Gasket Bare Frame in Matte White	2	Yes		\$	\$
42	General	Conventional Panel – Standard H 36" x W 36", Wide Gasket Bare Frame in Matte White	4	Yes		\$	\$
43	General	Panel End Trim, Wide Gasket H 36", Bare Frame in Matte White	2	Yes		\$	\$
Category 1B – Free Standing Systems (E) : Zone 106 – 108							
44	1bCPSXXNXXL24 XFRNNN	Panel Add-On Screen L24" <b>Type</b> : Privacy Screen <b>Support</b> : Panel Mounted <b>Material</b> : Acrylic / Glass Frosted	2	Yes		\$	\$
45	1bCPSXXNXXL36 XFRNNN	Panel Add-On Screen L36" <b>Type</b> : Privacy Screen <b>Support</b> : Panel Mounted <b>Material</b> : Acrylic / Glass Frosted	4	Yes		\$	\$
46	1bFFHREC24L60 WNONY	Wrap Around Cable Manager <b>Type</b> : Fixed Height Work Surface <b>Shape</b> : Rectangular W24 x L60 x H29 <b>Finish</b> : Laminate Grey	1	Yes		\$	\$
Category 2 – HA Tables : Zone 106 – 108							
47	2WSSREXXL30L 48BELXX	Die Cast Grommet, Square <b>Type</b> : Sit Stand Electric <b>Shape</b> : Rectangular, Laminate <b>Size</b> : W 30 x L 48 x H 23 to 48.7	2	Yes		\$	\$
48	2WSSREXXL30L 60BELXX	hiSpace Basic HA FS Comp Table <b>Type</b> : Sit Stand Electric <b>Shape</b> : Rectangular, Laminate <b>Size</b> : W 30 x L 60 x H 23 to 48.7	1	Yes		\$	\$
Category 5 – Ancillary and Lighting Products : Zone 106 -108							
49	5MOADUARMCL PMTXXXXX	<b>Product</b> : Monitor Arms <b>Options</b> : Dual Arm, Clamp Mount	1	Yes		\$	\$



50	5PMOWKSMTAC USBXXXXXX	<b>Product</b> : Power Module <b>Option</b> : Work Surface Mounted <b>Option</b> : AC and USB Power	1	Yes		\$	\$
						<b>Product Total for Zone 106-108</b>	\$

<b>Category 1B – Free Standing Systems (E) : Closed Office</b>							
51	1bCPSXXSXXL48 XFANNN	Infinity Desk Edge Screen <b>Type</b> : Privacy Screen <b>Support</b> : Work Surface Mounted <b>Material</b> : Fabric	1	Yes		\$	\$
52	1bFFHREC24L72 WNOLNY	C-Leg Standard <b>Type</b> : Fixed Height Work Surfaces <b>Shape</b> : Rectangular W24 x L72 x H29 <b>Panels</b> : Laminate	2	Yes		\$	\$
53	1bFFHREC24L72 WNOLNY	Modesty Panel – Laminate <b>Type</b> : Fixed Height Work Surfaces <b>Shape</b> : Rectangular W24 x L72 x H29 <b>Panels</b> : Laminate	1	Yes		\$	\$
54	1bFFHREC24L72 WNOLNY	Rectangular Work surface <b>Type</b> : Fixed Height Work Surfaces <b>Shape</b> : Rectangular W24 x L72 x H29 <b>Panels</b> : Laminate	1	Yes		\$	\$
55	1bFFHREC24L72 WNOLNY	Cable Tray W12" <b>Type</b> : Fixed Height Work Surfaces <b>Shape</b> : Rectangular W24 x L72 x H29 <b>Panels</b> : Laminate	1	Yes		\$	\$
56	1bFFHREC24L72 WNOLNY	Wrap Around Cable Manager <b>Type</b> : Fixed Height Work Surfaces <b>Height</b> : Adjustable Table 52" <b>Finish</b> : Grey	1	Yes		\$	\$
57	1bSPBMCAL1518 XXYKXX	Rolling Pedestal, Casters Support <b>Type</b> : Pedestals Box / File Mobile <b>Material</b> : Laminate <b>Locks</b> : Keyed	1	Yes		\$	\$

<b>Category 2 – HA Tables : Closed Office</b>							
58	2WSSREXXL30L 48BELXX	Height Adjustable Table <b>Type</b> : Sit Stand Electric <b>Shape</b> : Rectangular, Laminate <b>Size</b> : W 30 x L 48 x H 23 to 48.7	1	Yes		\$	\$
59	2WSSREXXL30L 48BELXX	Die Cast Grommet, Square <b>Type</b> : Sit Stand Electric <b>Shape</b> : Rectangular, Laminate <b>Size</b> : W 30 x L 48 x H 23 to 48.7	1	Yes		\$	\$
60	2WSSREXXL30L 48BELXX	hiSpace Basic HA FS Comp Table <b>Type</b> : Sit Stand Electric <b>Shape</b> : Rectangular, Laminate <b>Size</b> : W 30 x L 48 x H 23 to 48.7	1	Yes		\$	\$

<b>Category 5 – Ancillary and Lighting Products : Closed Office</b>							
61	5MOADUARMCL PMTXXXXXX	<b>Product</b> : Monitor Arms <b>Options</b> : Dual Arm, Clamp Mount	1	Yes		\$	\$
62	5PMOWKSMTAC USBXXXXXX	<b>Product</b> : Power Module <b>Option</b> : Work Surface Mounted <b>Option</b> : AC and USB Power	1	Yes		\$	\$
						<b>Product Total for Closed Office</b>	\$

**\*\*Provide additional information:**

Canada is requesting bidders: to provide drawings and/or pictures including descriptive literature for these products with your bid submission.

**NSA products (must not exceed 30% of the firm quantity by category)**

The Supplier signs, and certifies that all the NSA products offered will conform to all specifications and meet the testing requirements detailed at Annex D.

Section A - IU REQUIREMENT			Section B – SUPPLIER'S BID			
#	NON-SA Product(s)	QTY	** Provide additional Information Yes/No	Supplier Part Number	Firm Unit Price \$	Extended Total [Qty x Price] \$
63	Bench – Fabric Seat Cushion – Lay On D18" x W60"	2	Yes		\$	\$
64	Low Secondary Desk D18" x W60", No Grommet (1-3/16")	2	Yes		\$	\$
<b>PRODUCT TOTAL (SPACE 05 + Zone 106-108 + Closed Office + NSA Products)</b>						<b>\$</b>

Section A - IU REQUIREMENT				Section B – SUPPLIER'S BID	
Product Item # from Table 1	Location	Desired Date** (YYYY-MM-DD)	Desired Time: Normal Business Hours Or Outside Normal Business Hours *	Supplier will supply and deliver as per below** Standard Lead time is between 6-10 weeks for furniture delivery and installation.	Firm Lot Price \$
1 - 64	8950 Blvd. de la Grande-Allée, Suite # 104 Mirabel, QC J7J 0T3	2023-07-12	Normal Business Hours.	_____ : weeks	\$
*Normal Business Hours 8:00 – 17:00, as per SA, Annex A, article 5				<b>Delivery Total:</b>	\$
**The Project Authority (PA) will provide the supplier the authority to proceed prior to the finalized delivery date taking into consideration the delivery time provided by the supplier. Canada will not be responsible if the supplier chooses to proceed without the PA authorization.					

Section A - IU REQUIREMENT				Section B – SUPPLIER'S BID	
Product Item # from Table 1	Location	Desired Date** (YYYY-MM-DD)	Desired Time: Normal Business Hours Or Outside Normal Business Hours*	Supplier will install as per below** Standard Lead time is between 6-10 weeks for furniture delivery and installation.	Firm Lot Price \$
1-64	8950 Blvd. de la Grande-Allée, Suite # 104 Mirabel, QC J7J 0T3	2023-07-12	Normal Business Hours.	_____ : weeks from date of supply and delivery	\$
*Normal Business Hours 8:00 – 17:00, as per SA, Annex A, article 5				<b>Installation Total:</b>	\$
**The Project Authority (PA) will provide the supplier the authority to proceed prior to the finalized installation date taking into consideration the installation time provided by the supplier. Canada will not be responsible if the supplier chooses to proceed without the PA authorization.					

Table 4 – Optional Product       Not Applicable

Table 5 – Optional Delivery  Not Applicable

Table 6 – Optional Installation  Not Applicable

<b>Table 7 – Standard Finishes and Canada’s Facilities to Accommodate the Delivery and Certifications</b>		
<b>1.</b>	<b>Standard Finishes</b>	
<b>1.1</b>	<p>IU is to consult the Supplier’s Website identified in Part 6A of the SA to view the available finishes.</p> <p>Within ten business days of the contract award, the Project Authority will provide the Contractor with a written notice of Canada’s finish choices for each of the product(s) in Annex A.</p> <p>The Contractor will deliver the products corresponding to Canada’s choice of specific finishes(s). No additional charge will be applied to Canada.</p>	
<b>2.</b>	<p><b>Canada’s Facilities to Accommodate the Delivery</b>  <i>The Supplier’s employees and subcontractors requiring access to the site must adhere to the health and safety plans established for the site, in addition to any laws in effect in the jurisdiction where the work is being performed.</i></p> <p><i>During the period of the contract, a representative of Canada or a service provider(s) under contract with the Government of Canada may request the list of employees and subcontractors requiring access to the site to perform the work and their security statuses. Information must be provided in the timeframe prescribed in order to ensure that the supply, delivery and installation of the furniture aligns with the master schedule.</i></p>	
<b>2.1</b>	<b>Loading Dock/Location</b>	
<b>A</b>	Location	<b>CFIA : 8950 Blvd. de la Grande-Allée, Suite # 104 Mirabel, QC J7J 0T3</b>
<b>B</b>	Dock	Not applicable.
<b>C</b>	Lift	Does not exist.
<b>D</b>	Door	Main Entrance.
<b>E</b>	Freight Elevator	Not applicable.
<b>F</b>	Other (specify, if any)	Contact <b>Danielle Dubuc</b> at <b>(514) 668-7417</b> to schedule delivery. The Workspaces can be delivered upon appointment confirmation, during Normal Business Hours, Monday to Friday 8am to 4pm.
<b>3.</b>	<b>Continuance of Certifications</b>	
	<p>The Bidder certifies that by submitting a bid in response to the RFB, the Bidder, and any of the Bidder’s members if the Bidder is a Joint Venture, continues to comply with all of the following certifications listed in Parts 6A and 6B of the Bidder’s SA for Work Spaces.</p> <p>Canada may request copies of environmental certification(s) prior to contract award within a time period specified by the Identified User.</p>	
<b>3.1</b>	Integrity Provisions	
<b>3.2</b>	Federal Contractor’s Program for Employment Equity	
<b>3.4</b>	Product Conformance	
<b>3.5</b>	Price Certification (In accordance with the SA, Part 6B)	

<b>Table 8 - Bid Evaluation and Contract Total</b>		
1	<b>Firm (Bid) Product Total</b> (Table 1)	\$
2	<b>Firm (Bid) Delivery Total</b> (Table 2)	\$
3	<b>Firm (Bid) Installation Total</b> (Table 3)	\$
4	Hardware Total as per article 1.5 of Annex A-1 of SA (if Applicable*)	\$
5	<b>Total Evaluated (Bid) Price* (1 + 2 + 3 + 4*)</b>	\$
6	<b>Applicable (Bid) Tax(es):</b>	\$
7	<b>Total Estimated (Bid) Cost (5 + 6):</b>	\$
8	<b>Contract Price : [applicable at contract award only] * Applicable taxes extra.</b>	\$

**Table 9 – Bidder’s Authorized Representative**

<b>1.</b>	<b>Bidder’s Authorized Representative for the Bid and the Contract</b>	
	<b>Name:</b>	Telephone:
		E-Mail:
		PBN:
		Ariba #:

## ANNEX B – FLOOR PLANS

### INSTRUCTIONS TO BIDDERS:

For Category 1a products, the Bidders must provide:

- a. Completed floor plan(s) with proposed SA approved products;
- b. A product listing of proposed SA approved products offered at floor plan(s).  
As a minimum the product listing must include the following information:
  - supplier part numbers including NSA products forming part of this category;
  - brief product descriptions;
  - quantities, and;
  - firm unit prices.
- c. Bidders must provide a stackable panel system that consists of a Base panel with the required add-on module(s) as defined in the panel matrix of this requirement.

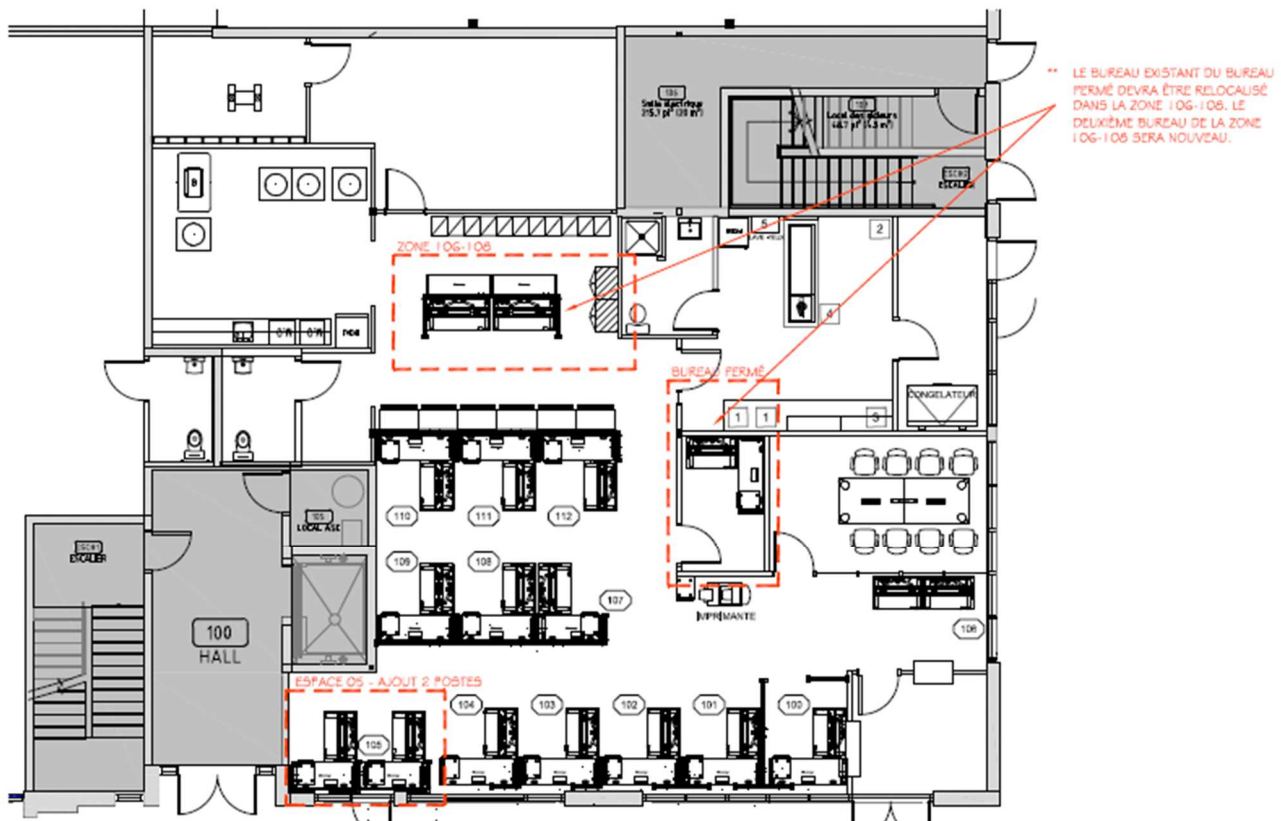
**Products from categories other than Category 1a shown on floor plan are for information purposes only.**

By submitting a bid, the Bidder certifies that their submission includes all components and quantities for Category 1a, in accordance with the floor plans, panel details, panel matrices and/or workstation layouts stipulated in Annex B.

**At contract award, “By submitting a bid, the Bidder” becomes “The Contractor”.**

### 1. Floor Plan

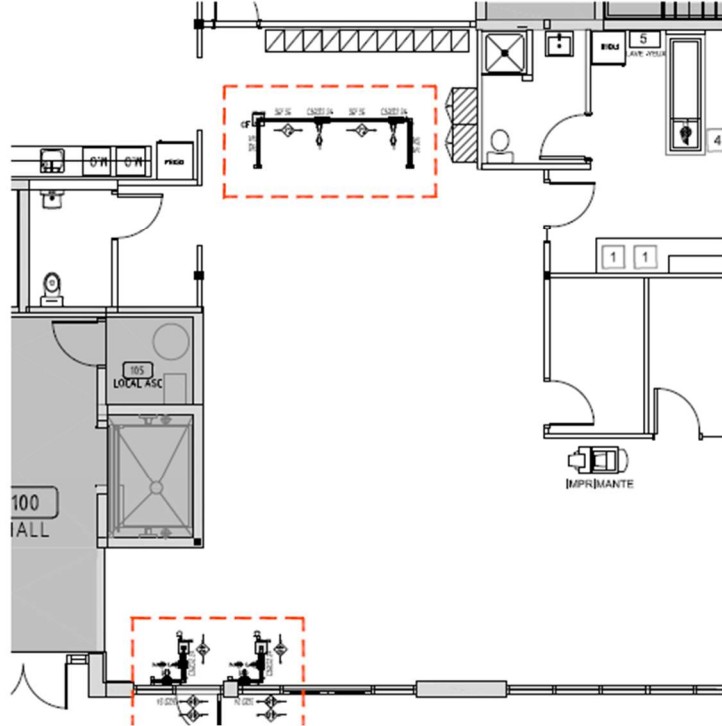
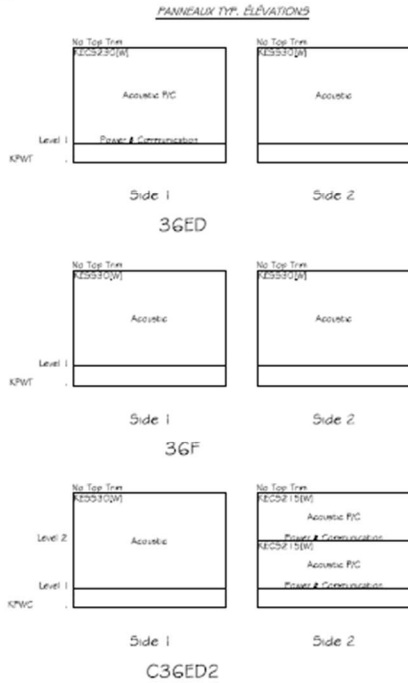
- a. The existing closed office will need to be relocated to Zone 106-108. The Workstation in Zone 106-106 will be a new workspace.



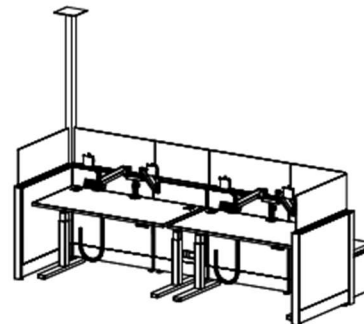
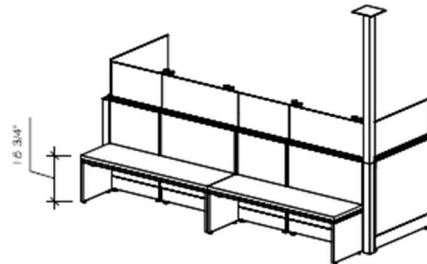
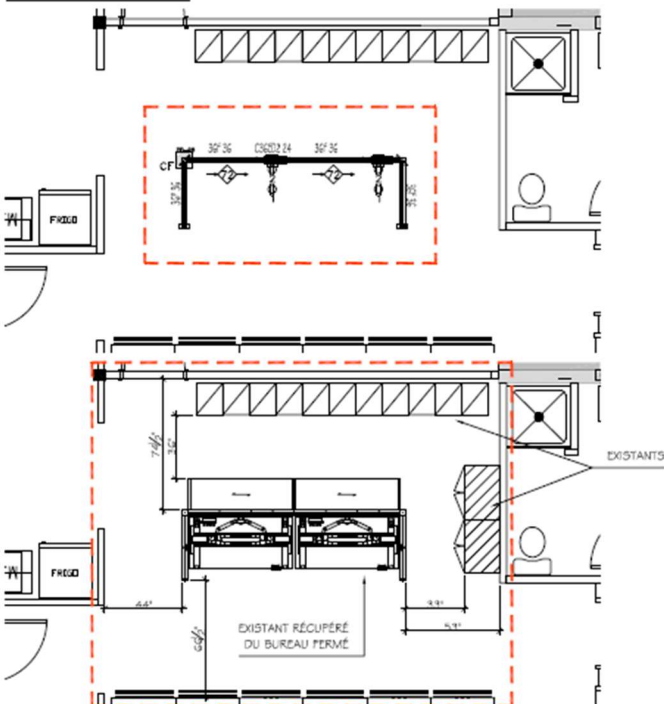
## 2. Category 1a Requirement

- a. All components for Category 1A : General, and their required quantities, have been provided at **Table 1 – Product Table** for SPACE 05, Zone 106-108 and the Closed Office.
- b. Please refer to the document 2023-01154 Floor Plans + Dimensions included with this RFB.

CAT 1a



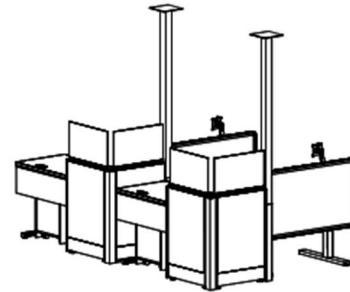
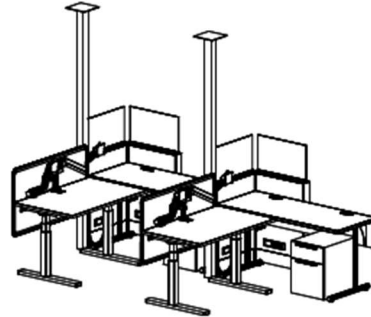
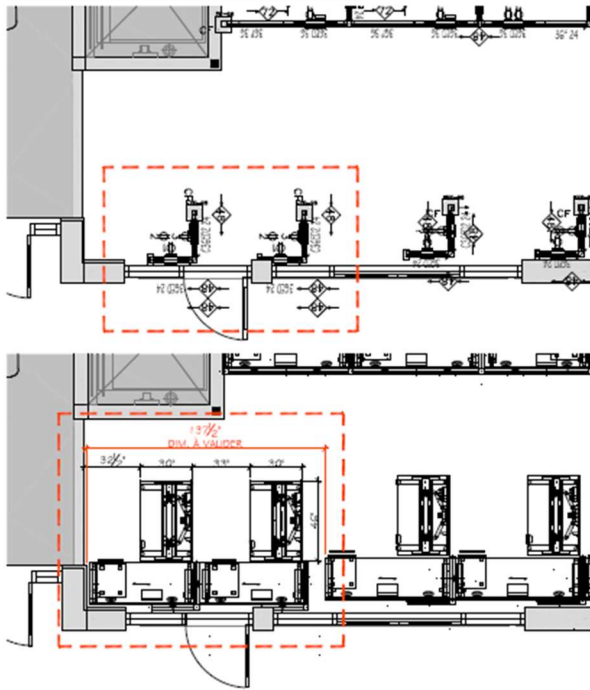
ZONE 106-108



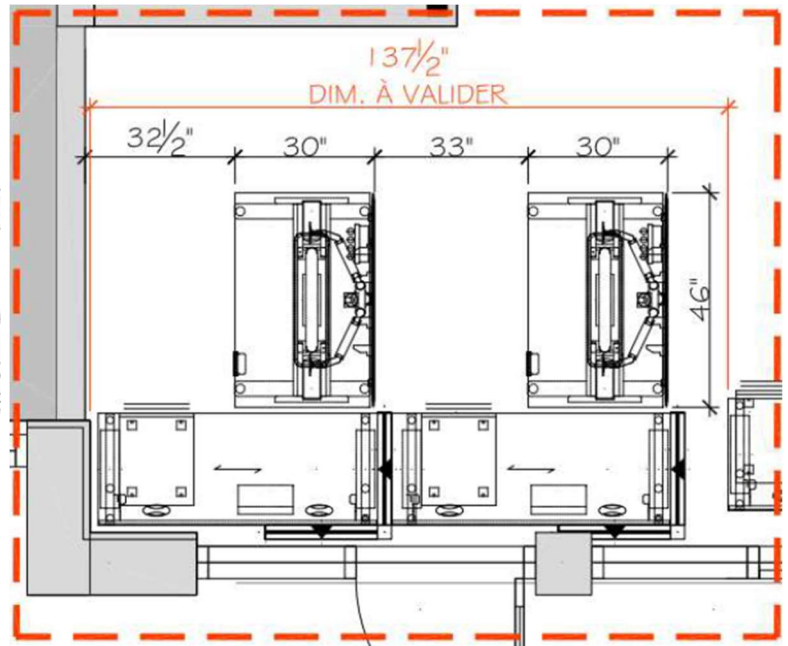
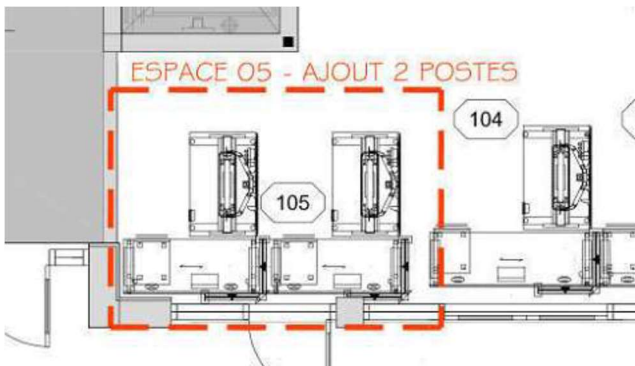
### 3. Panel Details

- a. All required panel heights have been provided in **Table 1 – Product Table**.
- b. When power is required, the power is located below the work surface height; should a grouping of workstation types include shared panels and one side is identified as powered and the other side is non-powered, those panels affected must be powered.
- c. Type of power feed : **Power Pole**.
- d. Component System Accessories: Panel mounted accessories integrated into the panel frame will be shown on the floor plan Accessories attached to the panel separately must be specified.

ESPACE 05 - AJOUT 2 POSTES



### Zone 105 and Dimensions



#### 4. Workstation Layouts

- a. The floor plan takes precedent over any discrepancies with the workstation layouts.
- b. When two or more typical workstation types share a common panel spine, the finishes of the interior side of the workstation panel as outlined in the Typical Data Sheets must be followed and **NO PANELS SHALL BE DOUBLED**. Where no workstation exists adjacent to typical workstation, refer to Data Sheet for finish.
- c. Should one typical workstation identify power and the other does not – power will be required for both. Include Workstation Layouts



## ANNEX C – ADDITIONAL SPECIFICATIONS, CERTIFICATIONS

This Annex includes the additional Specifications, Certifications associated with NSA product forming part of the requirement.

### 1. Specifications

Required NSA Products	Qty
Bench – Fabric Seat Cushion – Lay On D18" x W60"	2
Low Secondary Desk D18" x W60", No Grommet (1-3/16")	2

### 2. Certifications

#### 2.1 NSA Product Conformance (Required precedent to Issuance of a contract)

The Supplier certifies that all the NSA products offered will conform to all specifications indicated in Annex A and D of the RFB, and meet the testing and performance requirements found at ANNEX A-1 and A-2 of the Supply Arrangement, as applicable.

\_\_\_\_\_  
Supplier's Signature

\_\_\_\_\_  
Date

#### NSA Product Conformance Certification (applies after contract award)

The Supplier warrants that the NSA Product Conformance Certification submitted by the Supplier with its bid is accurate and complete. The Supplier must keep proper records and documentation relating to the NSA product conformance and the testing requirements in this Annex, as applicable. The Supplier must not, without obtaining the prior written consent of the SAA, dispose of any such records or documentation until the expiration of the Contract or the expiry date of the Warranty, whichever is later. All such records and documentation must at all times during the retention period be open to audit, inspection and examination by the representatives of Canada, who may make copies and take extracts.

In addition, the Supplier must provide representatives of the SAA access to all locations where any part of the Work is being performed at any time during working hours. Representatives of the SAA may examine and test the Work as they see fit. The Supplier must provide all assistance and access to facilities, test pieces, samples and documentation that the representatives of the SAA may reasonably require for the carrying out of the inspection, which may also include the submission of test reporting documentation as listed in Annex A and D. The Supplier must forward such test pieces, samples and/or documentation that may also include letters of certification from the laboratories to such person or location as the representatives of the SAA specifies.

# ATTACHMENT 1 TO ANNEX C ADDITIONAL CERTIFICATIONS REQUIRED WITH THE BID

## Federal Government's Procurement Strategy for Indigenous Business

### 1. PSIB Certifications

For additional information, visit:

- Annex 9.4 and section 9.40 of the Supply Manual (<https://buyandsell.gc.ca/policy-and-guidelines/supply-manual/section/9>),
- Policy Notice 1996-2 (<https://www.tbs-sct.gc.ca/pol/doc-eng.aspx?id=13706> ), and
- Policy Notice 1997-6 ([https://www.tbs-sct.gc.ca/Pubs\\_pol/dcgpubs/ContPolNotices/97-6-eng.asp#defi](https://www.tbs-sct.gc.ca/Pubs_pol/dcgpubs/ContPolNotices/97-6-eng.asp#defi))

#### 1.1 Indigenous Business

- By submitting this certification a Bidder certifies that the statements contained in this certification are accurate and complete.
- The Bidder:
  - certifies that it meets, and will continue to meet throughout the duration of any resulting contract, the requirements described in this annex;
  - agrees that any subcontractor it engages under any resulting contract must satisfy the requirements described in this annex; and
  - agrees to provide to Canada, immediately upon request, evidence supporting any subcontractor's compliance with the requirements described in this annex.
  - The Bidder must check the applicable box below:
    - The Bidder is an Indigenous business that is a sole proprietorship, band, limited company, co-operative, partnership or not-for-profit organization.
    - OR**
    - The Bidder is either a joint venture consisting of two or more Indigenous businesses or a joint venture between an Indigenous business and a non-Indigenous business.
- The Bidder must, upon request by Canada, provide all information and evidence supporting this certification.
- The Bidder must ensure that this evidence will be available for audit during normal business hours by a representative of Canada, who may make copies and take extracts from the evidence. The Bidder must provide all reasonably required facilities for any audits.

#### 1.2 Owner Certification – Indigenous Business

If requested by the Contracting Authority, the Bidder must provide the following certification completed for each owner who is Indigenous:

1. I am an owner of \_\_\_\_\_ (insert name of business), and an Indigenous person, as defined in [Annex 9.4](#) of the Supply Manual entitled "Requirements for the Set-aside Program for Indigenous Business".

2. I certify that the above statement is true and consent to its verification upon request by Indigenous Services Canada.

\_\_\_\_\_  
Printed Name of Owner

\_\_\_\_\_  
Signature of Owner

\_\_\_\_\_  
Date