



RETURN BIDS TO:

RETOURNER LES SOUMISSIONS À:

See Section 2.2
Voir Section 2.2

STANDARD REQUEST FOR BID

INVITATION À SOUMISSIONNER - STANDARD

The Bidder offers to provide to Canada the goods, services or both listed in the bid solicitation in accordance with the conditions set out in the bid solicitation and the prices set out in the bid.

This bid solicitation is issued in accordance with the conditions of the Supply Arrangement E60PQ-120001/G.

Le soumissionnaire offre de fournir au Canada les biens, services ou les deux énumérés dans la demande de soumissions aux conditions prévues dans la demande de soumissions et aux prix indiqués dans la soumission.

Cette demande de soumissions est émise conformément aux conditions de l'arrangement en matière d'approvisionnement E60PQ-120001/G.

Solicitation No. - N° de la demande	Amendment No. - N° de modification
5P420-22-0288/A	s/o

Solicitation closes – La demande prend fin :	File No. - N° de dossier
at – à 14h MDT - HAR	5P420-22-0288
on – le	
9 May 2023 9 mai 2023	

No of Page/ N° de page	1 de 24
---------------------------	---------

Date of Solicitation – Date de la demande
April 28, 2023
Address inquiries to – Adresser toute demande de renseignement à :
See Section 6, Article 6.5.1. Voir Section 6, Article 6.5.1
Destination
See Annex B Voir Annexe B

Instructions:

Municipal taxes are not applicable.

Unless otherwise specified in the bid solicitation, all prices quoted must be net prices in Canadian funds including Canadian customs duties, excise taxes, must be FOB, including all delivery charges to destination(s) as indicated. The amount for Applicable Taxes is to be shown as a separate item.

Instructions:

Les taxes municipales ne s'appliquent pas.

Sauf indication contraire dans la demande de soumissions, tous les prix indiqués doivent être des prix nets, en dollars canadiens, comprenant les droits de douane canadiens, la taxe d'accise et doivent être FAB, y compris tous frais de livraison à la (aux) destination(s) indiqué(s). Le montant des taxes applicables doit apparaître séparément.

Supplier Name and Address – Nom et adresse du fournisseur
Telephone No. - N° de téléphone Facsimile No. - N° de télécopieur
Name and title of person authorized to sign on behalf of supplier (type or print) Nom et titre de la personne autorisée à signer au nom du fournisseur (caractère d'impression)
Signature : _____ Date : _____

TABLE OF CONTENTS

PART 1 - GENERAL INFORMATION 3

1.1 SECURITY REQUIREMENTS..... 3

1.2 REQUIREMENT 3

1.3 GENERAL OR PROCUREMENT STRATEGY FOR INDIGENOUS BUSINESS (PSIB)..... 3

1.4 DEBRIEFINGS..... 3

PART 2 - BIDDER INSTRUCTIONS..... 4

2.1 STANDARD INSTRUCTIONS, CLAUSES AND CONDITIONS..... 4

2.2 SUBMISSION OF BIDS 4

2.3 ENQUIRIES - BID SOLICITATION..... 5

2.4 BID CHALLENGE AND RECOURSE MECHANISMS 5

PART 3 - BID PREPARATION INSTRUCTIONS..... 6

3.1 BID PREPARATION INSTRUCTIONS 6

PART 4 - EVALUATION PROCEDURES AND BASIS OF SELECTION..... 7

4.1 EVALUATION PROCEDURES 7

4.2 BASIS OF SELECTION 7

PART 5 – CERTIFICATIONS AND ADDITIONAL INFORMATION 8

5.1 CERTIFICATIONS REQUIRED WITH THE BID..... 8

5.2 CERTIFICATIONS PRECEDENT TO CONTRACT AWARD AND ADDITIONAL INFORMATION 8

5.2.2 FEDERAL CONTRACTORS PROGRAM FOR EMPLOYMENT EQUITY - BID CERTIFICATION 8

5.2.3 ADDITIONAL CERTIFICATIONS PRECEDENT TO CONTRACT AWARD 9

PART 6 - RESULTING CONTRACT CLAUSES 10

6.1 SECURITY REQUIREMENTS..... 10

6.2 REQUIREMENT 10

6.3 STANDARD CLAUSES AND CONDITIONS..... 10

6.3.1 GENERAL CONDITIONS 10

6.4 TERM OF CONTRACT 11

6.5 AUTHORITIES 11

6.6 PAYMENT..... 12

6.7 INVOICING INSTRUCTIONS..... 12

6.8 CERTIFICATIONS AND ADDITIONAL INFORMATION 12

6.9 APPLICABLE LAWS 13

6.10 PRIORITY OF DOCUMENTS 13

6.11 ACCESS TO FACILITIES AND EQUIPMENT..... 13

6.12 CANADA’S FACILITIES TO ACCOMMODATE THE DELIVERY 13

6.13 STANDARD FINISHES..... 14

6.14 SACC MANUAL CLAUSES 14

ANNEX A 15

REQUIREMENT..... 15

ANNEX B 21

BASIS OF PAYMENT..... 21

PART 1 - GENERAL INFORMATION

1.1 Security Requirements

There is no security associated with this requirement.

Contractor may be escorted; possession of a security clearance not required.

1.2 Requirement

This solicitation is issued pursuant to the Supplier's Furniture for Office Seating Supply Arrangement (SA) that forms part of the series of SAs issued by PWGSC with the number E60PQ-120001/PQ. The terms and conditions in the Supplier's SA apply to and form part of this solicitation. Bidders who submit a bid agree to be bound by those terms and conditions as well as the terms and conditions in this solicitation.

The requirement is detailed under Annex A of the resulting contract clauses.

1.3 General or Procurement Strategy for Indigenous Business (PSIB)

This requirement is a:

General Stream Procurement

The requirement is subject to all applicable trade agreements as identified in the Notice of Proposed Procurement (NPP).

PSIB Stream Procurement

This procurement is set aside under the federal government Procurement Strategy for Indigenous Business. For more information on Aboriginal business requirements of the Set-aside Program for Indigenous Business, refer to [Annex 9.4](#) of the Supply Manual.

This procurement is set aside from the international trade agreements under the provision each has for measures with respect to Aboriginal peoples or for set-asides for small and minority businesses.

Further to Article 800 of the Canadian Free Trade Agreement (CFTA), CFTA does not apply to this procurement.

1.4 Debriefings

Bidders may request a debriefing on the results of the bid solicitation process. Bidders should make the request to the Contracting Authority within 15 working days from receipt of the results of the bid solicitation process. The debriefing may be in writing, by telephone or in person.

PART 2 - BIDDER INSTRUCTIONS

2.1 Standard Instructions, Clauses and Conditions

All instructions, clauses and conditions identified in the bid solicitation by number, date and title are set out in the [Standard Acquisition Clauses and Conditions Manual](https://buyandsell.gc.ca/policy-and-guidelines/standard-acquisition-clauses-and-conditions-manual) (https://buyandsell.gc.ca/policy-and-guidelines/standard-acquisition-clauses-and-conditions-manual) issued by Public Works and Government Services Canada.

Bidders who submit a bid agree to be bound by the instructions, clauses and conditions of the bid solicitation and accept the clauses and conditions of the resulting contract.

The [2003](#) (2022-03-29) Standard Instructions - Goods or Services - Competitive Requirements, are incorporated by reference into and form part of the bid solicitation.

All reference to the Minister of Public Works and Government Services Canada shall be deleted and replaced with the Minister of the Environment for the purposes of the Parks Canada Agency. All reference to the Department of Public Works and Government Services Canada shall be deleted and replaced with the Parks Canada Agency.

Subsection 3.a) of Section 01, Integrity Provisions - Bid of the Standard Instructions [2003](#) incorporated by reference above is deleted in its entirety and replaced with the following:

- a. at the time of submitting an arrangement under the Request for Supply Arrangements (RFSA), the Bidder has already provided a list of names, as requested under the [Ineligibility and Suspension Policy](#). During this procurement process, the Bidder must immediately inform Canada in writing of any changes affecting the list of names.

Subsection 2. entitled Canada Post Corporation's Connect service of section 08, Transmission by facsimile or by Canada Post Corporation's (CPC) Connect service of the Standard Instructions 2003 incorporated by reference above is deleted in its entirety.

2.2 Submission of Bids

PARKS CANADA IS NOT CURRENTLY ACCEPTING BIDS VIA SAP ARIBA, YOU MUST SUBMIT YOUR BID VIA FAX OR EMAIL AS INDICATED IN THE SOLICITATION DOCUMENT.

Bids must be submitted only to the Parks Canada Agency (PCA) Bid Receiving Unit by the date and time indicated on page 1 of the bid solicitation.

Bids submitted in-person or by courier will not be accepted.

The only acceptable facsimile for responses to bid solicitations is 1-866-246-6893.

The only acceptable email address for responses to bid solicitations is soumissionsouest-bidswest@canada.ca.

The maximum email file size that Parks Canada is capable of receiving is 15 megabytes. The Bidder is responsible for any failure attributable to the transmission or receipt of the emailed bid due to file size.

The Bidder should be cognisant of the size of the email as a whole, and not only the attachments. Please take into consideration that some attachments, when sent, may be resized during the email transfer. If the email size is too large, the Bidder should send the bid in multiple emails properly labeled with the solicitation number, project name, and indicate how many emails are included (ex. 1 of 2).

Emails with links to bid documents will not be accepted. Bid documents must be sent as email attachments.

2.3 Enquiries - Bid Solicitation

All enquiries must be submitted in writing to the Contracting Authority no later than four (4) calendar days before the bid closing date. Enquiries received after that time may not be answered.

Bidders should reference as accurately as possible the numbered item of the bid solicitation to which the enquiry relates. Care should be taken by Bidders to explain each question in sufficient detail in order to enable Canada to provide an accurate answer. Technical enquiries that are of a proprietary nature must be clearly marked "proprietary" at each relevant item. Items identified as "proprietary" will be treated as such except where Canada determines that the enquiry is not of a proprietary nature. Canada may edit the question(s) or may request that the Bidder do so, so that the proprietary nature of the question(s) is eliminated, and the enquiry can be answered to all Bidders. Enquiries not submitted in a form that can be distributed to all Bidders may not be answered by Canada.

2.4 Bid Challenge and Recourse Mechanisms

- (a) Several mechanisms are available to potential suppliers to challenge aspects of the procurement process up to and including contract award.
- (b) Canada encourages suppliers to first bring their concerns to the attention of the Contracting Authority. Canada's [Buy and Sell](#) website, under the heading "[Bid Challenge and Recourse Mechanisms](#)" contains information on potential complaint bodies such as:
 - Office of the Procurement Ombudsman (OPO)
 - Canadian International Trade Tribunal (CITT)
 - (a) Suppliers should note that there are **strict deadlines** for filing complaints, and the time periods vary depending on the complaint body in question. Suppliers should therefore act quickly when they want to challenge any aspect of the procurement process.

Solicitation No.:
5P420-22-0288/A

Amendment No.:
00

Contracting Authority:
Andrea McGraw-Alcock

Client Reference No.:
n/a

Title:
Office Seating, Parks Canada Collections and Curatorial Centre, QC

PART 3 - BID PREPARATION INSTRUCTIONS

3.1 Bid Preparation Instructions

Canada requests that the bid be gathered per section and separated as follows:

Section I: Financial Bid
Section II: Certifications

Prices must appear in the financial bid only. No prices must be indicated in any other section of the bid.

Section I: Financial Bid

Bidders must submit their financial bid in accordance with the **Basis of Payment at Annex B**.

3.1.1. Exchange Rate Fluctuation

SACC Manual clause [C3011T](#) (2013-11-06), Exchange Rate Fluctuation

Section II: Certifications

Bidders must submit the certifications and additional information required under Part 5.

Solicitation No.:
5P420-22-0288/A

Amendment No.:
00

Contracting Authority:
Andrea McGraw-Alcock

Client Reference No.:
n/a

Title:
Office Seating, Parks Canada Collections and Curatorial Centre, QC

PART 4 - EVALUATION PROCEDURES AND BASIS OF SELECTION

4.1 Evaluation Procedures

- (a) Bids will be assessed in accordance with the entire requirement of the bid solicitation including the technical and financial evaluation criteria.
- (b) An evaluation team composed of representatives of Canada will evaluate the bids.

4.1.1 Financial Evaluation

SACC Manual Clause [A0220T](#) (2014-06-26), Evaluation of Price-Bid

4.2 Basis of Selection

SACC Manual clause [A0069T](#) (2007-05-25) Basis of Selection

PART 5 – CERTIFICATIONS AND ADDITIONAL INFORMATION

Bidders must provide the required certifications and additional information to be awarded a contract.

The certifications provided by Bidders to Canada are subject to verification by Canada at all times. Unless specified otherwise, Canada will declare a bid non-responsive, or will declare a contractor in default if any certification made by the Bidder is found to be untrue whether made knowingly or unknowingly, during the bid evaluation period or during the contract period.

The Contracting Authority will have the right to ask for additional information to verify the Bidder's certifications. Failure to comply and to cooperate with any request or requirement imposed by the Contracting Authority will render the bid non-responsive or constitute a default under the Contract.

5.1 Certifications Required with the Bid

Bidders must submit the following duly completed certifications as part of their bid.

5.1.1 Integrity Provisions - Additional Information

Integrity checks were performed on each Supplier at time of issuance of their respective Supply Arrangement (SA). By submitting a bid, the Bidder certifies that the Bidder and its Affiliates are in compliance with the provisions as stated in Section 01 Integrity Provisions - Bid of Standard Instructions listed above.

5.1.2 Product Conformance

By submitting a bid, the Bidder certifies that all goods proposed conform, and will continue to conform throughout the period of the contract, to the requirement detailed under Annex A and to the Specifications of the series of SAs issued by PWGSC with the number E60PQ-120001/PQ.

5.1.3 Continuance of Certifications

The Bidder certifies that by submitting a bid in response to this solicitation, the Bidder, and any of the Bidder's members if the Bidder is a Joint Venture, continues to comply with all of the certifications submitted with its arrangement to become qualified as part of the series of SAs issued by PWGSC with the number E60PQ-120001/PQ.

5.2 Certifications Precedent to Contract Award and Additional Information

The certifications and additional information listed below should be submitted with the bid, but may be submitted afterwards. If any of these required certifications or additional information is not completed and submitted as requested, the Contracting Authority will inform the Bidder of a time frame within which to provide the information. Failure to provide the certifications or the additional information listed below within the time frame provided will render the bid non-responsive.

5.2.1 Federal Contractors Program for Employment Equity - Bid Certification

By submitting a bid, the Bidder certifies that the Bidder, and any of the Bidder's members if the Bidder is a Joint Venture, is not named on the Federal Contractors Program (FCP) for employment equity "FCP Limited Eligibility to Bid" list available at the bottom of the page of the [Employment and Social Development Canada \(ESDC\) - Labour's website \(https://www.canada.ca/en/employment-social-development/programs/employment-equity/federal-contractor-program.html#\)](https://www.canada.ca/en/employment-social-development/programs/employment-equity/federal-contractor-program.html#).

Canada will have the right to declare a bid non-responsive if the Bidder, or any member of the Bidder if the Bidder is a Joint Venture, appears on the "FCP Limited Eligibility to Bid" list at the time of contract award.

5.2.3 Additional Certifications Precedent to Contract Award

5.2.3.1 Price Certification

This certification applies to Competitive and Non-Competitive Requirements when the Total Evaluated Bid Price is \$50,000.00 or more and the bid is the only responsive bid.

a. Price Certification – Canadian-based Suppliers (other than Agency and Resale Outlets)

The Bidder certifies that the price proposed

- i. is not in excess of the lowest price charged anyone else, including the Bidder's most favoured customer, for the like quality and quantity of the goods, services or both;
- ii. does not include an element of profit on the sale in excess of that normally obtained by the Bidder on the sale of goods, services or both of like quality and quantity, and
- iii. does not include any provision for discounts to selling agents.

b. Price Certification – Canadian Agency and Resale Outlets

The Bidder certifies that the price proposed

- i. is not in excess of the lowest price charged anyone else, including the Bidder's most favoured customer, for the like quality and quantity of the goods, services or both; and does not include an element of profit on the sale in excess of that normally obtained by the Bidder on the sale of goods, services or both of like quality and quantity.

PART 6 - RESULTING CONTRACT CLAUSES

The following clauses and conditions apply to and form part of any contract resulting from the bid solicitation.

6.1 Security Requirements

6.1.1 There is no security requirement applicable to the Contract.

Contractor may be escorted; possession of security clearance not required.

Contractor personnel MAY NOT ENTER NOR PERFORM WORK ON sites where PROTECTED or CLASSIFIED information or assets are kept, without an escort provided by the department or agency for which the work is being performed.

6.2 Requirement

6.2.1 The Contractor must provide office seating in accordance with the Requirement at Annex A.

This contract is issued against the Supplier's Furniture for Office Seating Supply Arrangement (SA) that forms part of the series of SAs issued by PWGSC with the number E60PQ-120001/PQ. The terms and conditions in the Supplier's SA apply to and form part of this contract.

6.2.2 This requirement is a:

- General Stream
- PSIB Stream

6.3 Standard Clauses and Conditions

All clauses and conditions identified in the Contract by number, date and title are set out in the [Standard Acquisition Clauses and Conditions Manual](https://buyandsell.gc.ca/policy-and-guidelines/standard-acquisition-clauses-and-conditions-manual) (<https://buyandsell.gc.ca/policy-and-guidelines/standard-acquisition-clauses-and-conditions-manual>) issued by Public Works and Government Services Canada.

6.3.1 General Conditions

[2010A](#) (2022-12-01), General Conditions - Goods (Medium Complexity), apply to and form part of the Contract.

Section 09 - Warranty, is amended as follows:

At Sub-section 1.

Deleted: "The warranty period will be 12 months."

Inserted: "The warranty period will be 10 years with the exception of user adjustable components, which will have a warranty of 5 years."

At Sub-section 2.

Deleted: In its entirety

Inserted: as follows:

2. The Contractor must pay the transportation cost associated with returning the Work or any part of the Work to the Contractor's plant for replacement, repair or making good. The Contractor must also pay the transportation cost associated with forwarding the replacement or returning the Work or part of the Work when rectified to the delivery point specified in the Contract or to another location as directed by Canada. If, in the opinion of Canada, it is not expedient to remove the Work from its location, the Contractor must carry out any necessary repair or making good of the Work at that location. In such cases, the Contractor will be responsible for all Costs (including travel and living expenses) incurred in so doing, Canada will not reimburse these Costs." . All other provisions of the warranty section remain in effect.

Solicitation No.:
5P420-22-0288/A

Amendment No.:
00

Contracting Authority:
Andrea McGraw-Alcock

Client Reference No.:
n/a

Title:
Office Seating, Parks Canada Collections and Curatorial Centre, QC

6.4 Term of Contract

6.4.1 Period of the Contract

The period of the Contract is from date of Contract to the completion and acceptance of the Work.

6.4.2 Delivery Date

All the deliverables must be received as indicated at Annex B.

Standard Lead time is between 6-10 weeks for furniture delivery and installation.

6.4.4 Shipping Instructions

If delivery is required: Goods must be delivered DDP (Destination as specified in contract) Incoterms® rules, Applicable Taxes extra.

In addition to the above, the Contractor is to unload and move the goods to the delivery location(s) specified in the contract.

6.4.5 Delivery and Installation Points Location(s)

Delivery and Installation of the requirement will be made at the point(s) specified at Annex B of the Contract.

The Project Authority (PA) will provide the Supplier the authority to proceed prior to the finalized delivery and installation date taking into consideration the delivery and installation time provided by the Supplier. Canada will not be responsible if the Supplier chooses to proceed without the PA authorization.

6.5 Authorities

6.5.1 Contracting Authority

The Contracting Authority for the Contract is:

Name: Andrea McGraw-Alcock
Title: Contracting Officer, National Contracting Services
Department: Parks Canada Agency
Address: 220 – 4 Avenue S.E., suite 720 Calgary, AB T2G 4X3
Telephone: 587 436 5908
E-mail address: andrea.mcgraw-alcock@pc.gc.ca

The Contracting Authority is responsible for the management of the Contract and any changes to the Contract must be authorized in writing by the Contracting Authority. The Contractor must not perform work in excess of or outside the scope of the Contract based on verbal or written requests or instructions from anybody other than the Contracting Authority.

6.5.2 Project Authority

The Project Authority for the Contract is:

Name: _____
Title: _____
Organization: _____
Address: _____

Telephone: _____
E-mail address: _____

The Project Authority is the representative of the department or agency for whom the Work is being carried out under the Contract including the provision to approve the authority to proceed for delivery and installation and is responsible for all matters concerning the technical content of the Work under the Contract. Technical matters may be discussed with the Project Authority, however the Project Authority has no authority to authorize changes to the scope of the Work. Changes to the scope of the Work can only be made through a contract amendment issued by the Contracting Authority.

In addition, the PA is also responsible for ensuring that the Supplier's employees and subcontractors requiring access to the site adhere to the allocated time for the Supplier to access the site to deliver and install the furniture in accordance with the master schedule held by the General Contractor (a representative of Canada or a service provider(s) under contract with the Government of Canada).

6.5.3 Contractor's Representative

The Contractors Representative for the Contract is: *(to be completed at contract award)*

Name: _____

Title: _____

Telephone: _____

E-mail address: _____

6.6 Payment

6.6.1 Basis of Payment

In consideration of the Contractor satisfactorily completing all of its obligations under the Contract, the Contractor will be paid a firm price, as specified in **Annex B – Basis of Payment**, for a cost of \$_____ *(to be filled in only at contract award)*. Customs duties are included and Applicable Taxes are extra.

Canada will not pay the Contractor for any design changes, modifications or interpretations of the Work, unless they have been approved, in writing, by the Contracting Authority before their incorporation into the Work.

6.6.2 Method of Payment

SACC Manual clause H1000C (2008-05-12), Single Payment

6.7 Invoicing Instructions

The Contractor must submit invoices in accordance with the section entitled "Invoice Submission" of the general conditions.

Invoices must be distributed as follows:

- a. One (1) copy must be forwarded electronically to the Project Authority identified under the section entitled "Authorities" of the Contract for appropriate certification after inspection and acceptance of the Work takes place.

6.8 Certifications and Additional Information

6.8.1 Compliance

Unless specified otherwise, the continuous compliance with the certifications provided by the Contractor in its bid or precedent to contract award, and the ongoing cooperation in providing additional information are conditions of the Contract and failure to comply will constitute the Contractor in default. Certifications are subject to verification by Canada during the entire period of the Contract.

6.8.2 Indigenous Business Certification

6.8.2.1 The Contractor warrants that its certification of compliance is accurate and complete and in accordance with the "Requirements for the Set-aside Program for Indigenous Business" detailed in Annex 9.4 of the Supply Manual.

6.8.2.2 The Contractor must keep proper records and documentation relating to the accuracy of the certification provided to Canada. The Contractor must obtain the written consent of the Contracting Authority before disposing of any such records or documentation before the expiration of six years after final payment under the Contract, or until settlement of all outstanding claims and disputes, under the Contract, whichever is later. All such records and documentation must at all times during the retention period be open to audit by the representatives of Canada, who may make copies and take extracts. The Contractor must provide all reasonably required facilities for any audits.

6.8.2.3 Nothing in this clause must be interpreted as limiting the rights and remedies which Canada may otherwise have pursuant to the Contract.

6.9 Applicable Laws

As set out in the article "Applicable Laws" in Part 6A of the SA.

6.10 Priority of Documents

If there is a discrepancy between the wording of any documents that appear on the list, the wording of the document that first appears on the list has priority over the wording of any document that subsequently appears on the list.

- (a) the Articles of Agreement of the SA E60PQ-120001;
- (b) the Articles of this Agreement;
- (c) the general conditions 2010A (2022-12-01) – General Conditions: Goods (Medium Complexity);
- (d) Annex A, Requirement;
- (e) Annex B, Basis of Payment; and
- (f) the Contractor's bid dated _____ (*insert at the time of contract award*).

6.11 Access to Facilities and Equipment

Canada's facilities, equipment, documentation and personnel are not automatically at the disposal of the Contractor. If access to government premises, computer systems (micro computer network), working space, telephones, terminals, documentation and personnel for consultation is required by the Contractor to perform the Work, the Contractor must advise the Contracting Authority of the need for such access in a timely fashion. If the Contractor's request for access is approved by Canada and arrangements are made to provide access to the Contractor, the Contractor, its subcontractors, agents and employees must comply with all the conditions applicable at the Work site. The Contractor must further ensure that the facilities and equipment are used solely for the performance of the Contract.

6.12 Canada's Facilities to Accommodate the Delivery

The Supplier's employees and subcontractors requiring access to the site must adhere to the health and safety plans established for the site, in addition to any laws in effect in the jurisdiction where the work is being performed.

During the period of the contract, a representative of Canada or a service provider(s) under contract with the Government of Canada may request the list of employees and subcontractors requiring access to the site to perform the work and their security statuses. Information must be provided in the timeframe prescribed in order to ensure that the supply, delivery and installation of the furniture aligns with the master schedule

Solicitation No.:
5P420-22-0288/A

Amendment No.:
00

Contracting Authority:
Andrea McGraw-Alcock

Client Reference No.:
n/a

Title:
Office Seating, Parks Canada Collections and Curatorial Centre, QC

6.13 Standard finishes

The Identified User (IU) will consult the Supplier's Website identified in Part 6A of the SA to view the available finishes.

Within ten business days of the contract award, the Project Authority will provide the Contractor with a written notice of Canada's finish choices for each of the product(s) in Annex A.

The Contractor will deliver the products corresponding to Canada's choice of specific finishes(s). No additional charge will be applied to Canada.

6.14 SACC Manual Clauses

SACC Manual clause [B7500C](#) (2006-06-16), Excess Goods

SACC Manual clause [A9068C](#) (2010-01-11), Government Site Regulations

SACC Manual clause [B6802C](#) (2007-11-30), Government Property

SACC Manual clause [G1005C](#) (2016-01-28), Insurance - No Specific Requirement

**ANNEX A
REQUIREMENT**

Table A1:



CHAIR TYPE	QTY: 36
<input checked="" type="checkbox"/> Rotary Chair (up to 275 lbs) <input type="checkbox"/> Rotary Chair large occupant (up to 400 lbs) <input type="checkbox"/> Rotary Stool with backrest	

IMPORTANT: Canada may request additional information to confirm criteria prior to contract award within a time period specified by the Identified User (IU)..							
Criteria <i>Instructions</i>	Requirement Choices						
A Headrest <i>choose only 1</i>	<input checked="" type="checkbox"/> Yes – Adjustable and Removable (if applicable, indicate type of adjustment in additional criteria below) <i>Recommended with Standard Back Height</i> <input type="checkbox"/> No						
B Backrest Height <i>choose only 1</i>	<input checked="" type="checkbox"/> Standard = height between 450 mm (17.7 in.) to 660 mm (26.0 in.) <input type="checkbox"/> High = height greater than 660 mm (26.0 in.) <input type="checkbox"/> No preference = minimum height of 450mm (17.0 in.)						
	Backrest Profile <i>choose only 1</i> <input checked="" type="checkbox"/> No preference (It is recommended to select “no preference” as profiles do not affect functionality of chair). <input type="checkbox"/> Other = _____						
C Lumbar Support <i>choose ALL that are acceptable</i>	<u>Adjustable</u> <input checked="" type="checkbox"/> Up/Down = min. 50 mm (2.0 in.) height adjustment between 150mm (5.9 in.) to 250 mm (9.8 in.) <input type="checkbox"/> Other = _____						
	<input type="checkbox"/> Fixed = between 150 mm (5.9 in.) to 250 mm (9.8 in.) above seat						
D Armrests <i>choose only the minimum mandatory adjustments that are required.</i>	<u>Adjustable:</u> <input checked="" type="checkbox"/> Height adjustable = min. 63 mm (2.5 in.) adjustment between 176 mm (6.9 in.) to 289 mm (11.4 in.) <input checked="" type="checkbox"/> Width adjustable = within the range of 443 mm (17.0 in.) to 493 mm (19.4 in.) <input checked="" type="checkbox"/> Pivot adjustable = min. 20 degrees inward and min. 10 degrees outward						
	<input type="checkbox"/> Fixed = height range between 200 mm (7.9 in.) to 250 mm (9.8 in.)						
	<input type="checkbox"/> None						
E Seat Depth <i>choose ALL that are acceptable</i>	<input checked="" type="checkbox"/> Adjustable = min. 50 mm (2.0 in.) adjustment within the range 420 mm (16.5 in.) to 460 mm (18.1 in.)						
	<input type="checkbox"/> Fixed <table border="1" style="display: inline-table; vertical-align: top;"> <tr> <td><input type="checkbox"/> Shallow = 380 mm (15.0 in.) to 420 mm (16.5 in.)</td> </tr> <tr> <td><input type="checkbox"/> Medium = greater than 420 mm (16.5 in.) to 460 mm (18.1 in.)</td> </tr> <tr> <td><input type="checkbox"/> Deep = greater than 460 mm (18.1 in.)</td> </tr> </table>	<input type="checkbox"/> Shallow = 380 mm (15.0 in.) to 420 mm (16.5 in.)	<input type="checkbox"/> Medium = greater than 420 mm (16.5 in.) to 460 mm (18.1 in.)	<input type="checkbox"/> Deep = greater than 460 mm (18.1 in.)			
<input type="checkbox"/> Shallow = 380 mm (15.0 in.) to 420 mm (16.5 in.)							
<input type="checkbox"/> Medium = greater than 420 mm (16.5 in.) to 460 mm (18.1 in.)							
<input type="checkbox"/> Deep = greater than 460 mm (18.1 in.)							
F Seat Width	<u>Refer to chair type above</u> Rotary chairs and stools = min. width of 450 mm (17.7in.) Rotary Large Occupant models = min. width of 560 mm (22.0 in.)						
G Seat Height <i>choose ALL that are acceptable</i>	<table border="1" style="display: inline-table; vertical-align: top;"> <tr> <td>Rotary Chair</td> <td> <input checked="" type="checkbox"/> Adjustable <table border="1" style="display: inline-table; vertical-align: top;"> <tr> <td><input checked="" type="checkbox"/> Standard = includes 417 mm (16.4 in.) or less to 512 mm (20.2in.) or more</td> </tr> <tr> <td><input type="checkbox"/> Low = includes 376 mm (14.8 in.) to 439 mm (17.3 in.)</td> </tr> <tr> <td><input type="checkbox"/> Other = _____</td> </tr> </table> </td> </tr> <tr> <td><input type="checkbox"/> Fixed = between 417 mm (16.4 in.) to 512 mm (20.2 in.)</td> </tr> </table>	Rotary Chair	<input checked="" type="checkbox"/> Adjustable <table border="1" style="display: inline-table; vertical-align: top;"> <tr> <td><input checked="" type="checkbox"/> Standard = includes 417 mm (16.4 in.) or less to 512 mm (20.2in.) or more</td> </tr> <tr> <td><input type="checkbox"/> Low = includes 376 mm (14.8 in.) to 439 mm (17.3 in.)</td> </tr> <tr> <td><input type="checkbox"/> Other = _____</td> </tr> </table>	<input checked="" type="checkbox"/> Standard = includes 417 mm (16.4 in.) or less to 512 mm (20.2in.) or more	<input type="checkbox"/> Low = includes 376 mm (14.8 in.) to 439 mm (17.3 in.)	<input type="checkbox"/> Other = _____	<input type="checkbox"/> Fixed = between 417 mm (16.4 in.) to 512 mm (20.2 in.)
	Rotary Chair	<input checked="" type="checkbox"/> Adjustable <table border="1" style="display: inline-table; vertical-align: top;"> <tr> <td><input checked="" type="checkbox"/> Standard = includes 417 mm (16.4 in.) or less to 512 mm (20.2in.) or more</td> </tr> <tr> <td><input type="checkbox"/> Low = includes 376 mm (14.8 in.) to 439 mm (17.3 in.)</td> </tr> <tr> <td><input type="checkbox"/> Other = _____</td> </tr> </table>	<input checked="" type="checkbox"/> Standard = includes 417 mm (16.4 in.) or less to 512 mm (20.2in.) or more	<input type="checkbox"/> Low = includes 376 mm (14.8 in.) to 439 mm (17.3 in.)	<input type="checkbox"/> Other = _____		
<input checked="" type="checkbox"/> Standard = includes 417 mm (16.4 in.) or less to 512 mm (20.2in.) or more							
<input type="checkbox"/> Low = includes 376 mm (14.8 in.) to 439 mm (17.3 in.)							
<input type="checkbox"/> Other = _____							
<input type="checkbox"/> Fixed = between 417 mm (16.4 in.) to 512 mm (20.2 in.)							
Rotary Stool with backrest	<input type="checkbox"/> Adjustable = includes range from 580 mm (23 in.) to 840 mm (33 in.) <input type="checkbox"/> Fixed = equal or greater than 670 mm (27.5 in)						

Solicitation No.:
5P420-22-0288/A

Amendment No.:
00

Contracting Authority:
Andrea McGraw-Alcock

Client Reference No.:
n/a

Title:
Office Seating, Parks Canada Collections and Curatorial Centre, QC

H	Tilt Mechanism choose <i>only 1</i>	<input type="checkbox"/> Tilt Mechanism <i>seat and backrest adjust together in a ratio that falls within $\geq 1:1$ (includes both Synchro-Tilt and Unison Tilt)</i> <input type="checkbox"/> Tilt Independently <i>seat and backrest adjust independently of each other</i> <input checked="" type="checkbox"/> No preference
I	Seat and Backrest Locks choose <i>ALL</i> that are acceptable	<input type="checkbox"/> Setup Position = <i>chair locks or stops at one position with seat flat and backrest straight</i> <input checked="" type="checkbox"/> Multiple Positions = <i>chair locks or stops at multiple positions (including setup position)</i>
J	Casters	<input checked="" type="checkbox"/> carpet <input type="checkbox"/> hard surface
L	Foot Ring	<i>Standard with stool models only</i>
	Finishes (<i>Upholstery/ Non-Upholstery</i>) choose <i>ALL</i> that are acceptable	Backrest <input type="checkbox"/> Upholstery <input type="checkbox"/> Other = _____ <input checked="" type="checkbox"/> Breathable material (Mesh)
		Seat <input checked="" type="checkbox"/> Upholstery <input type="checkbox"/> Other = _____ <input checked="" type="checkbox"/> Breathable material (Mesh)
	Additional Criteria:	

Table A2: Rotary Stools



CHAIR TYPE	QTY: 20
<input type="checkbox"/> Rotary Chair (up to 275 lbs)	
<input type="checkbox"/> Rotary Chair large occupant (up to 400 lbs)	
<input checked="" type="checkbox"/> Rotary Stool with backrest	

IMPORTANT:
Canada may request additional information to confirm criteria prior to contract award within a time period specified by the Identified User (IU).

Criteria Instructions		Requirement Choices	
A	Headrest choose only 1	<input type="checkbox"/> Yes – Adjustable and Removable (if applicable, indicate type of adjustment in additional criteria below) Recommended with Standard Back Height <input checked="" type="checkbox"/> No	
	Backrest Height choose only 1	<input type="checkbox"/> Standard = height between 450 mm (17.7 in.) to 660 mm (26.0 in.) <input type="checkbox"/> High = height greater than 660 mm (26.0 in.) <input checked="" type="checkbox"/> No preference = minimum height of 450mm (17.0 in.)	
B	Backrest Profile choose only 1	<input checked="" type="checkbox"/> No preference (It is recommended to select "no preference" as profiles do not affect functionality of chair). <input type="checkbox"/> Other = _____	
C	Lumbar Support choose ALL that are acceptable	<u>Adjustable</u>	
		<input checked="" type="checkbox"/> Up/Down = min. 50 mm (2.0 in.) height adjustment between 150mm (5.9 in.) to 250 mm (9.8 in.) <input type="checkbox"/> Other = _____ <input checked="" type="checkbox"/> Fixed = between 150 mm (5.9 in.) to 250 mm (9.8 in.) above seat	
D	Armrests choose only the minimum mandatory adjustments that are required.	<u>Adjustable:</u>	
		<input type="checkbox"/> Height adjustable = min. 63 mm (2.5 in.) adjustment between 176 mm (6.9 in.) to 289 mm (11.4 in.) <input type="checkbox"/> Width adjustable = within the range of 443 mm (17.0 in.) to 493 mm (19.4 in.) <input type="checkbox"/> Pivot adjustable = min. 20 degrees inward and min. 10 degrees outward <input type="checkbox"/> Fixed = height range between 200 mm (7.9 in.) to 250 mm (9.8 in.)	
		<input checked="" type="checkbox"/> None	
E	Seat Depth choose ALL that are acceptable	<input checked="" type="checkbox"/> Adjustable = min. 50 mm (2.0 in.) adjustment within the range 420 mm (16.5 in.) to 460 mm (18.1 in.)	
		<input type="checkbox"/> Fixed	<input type="checkbox"/> Shallow = 380 mm (15.0 in.) to 420 mm (16.5 in.) <input type="checkbox"/> Medium = greater than 420 mm (16.5 in.) to 460 mm (18.1 in.) <input type="checkbox"/> Deep = greater than 460 mm (18.1 in.)
F	Seat Width	<u>Refer to chair type above</u> Rotary chairs and stools = min. width of 450 mm (17.7in.) Rotary Large Occupant models = min. width of 560 mm (22.0 in.)	
G	Seat Height choose ALL that are acceptable	Rotary Chair	<input type="checkbox"/> Adjustable <input type="checkbox"/> Standard = includes 417 mm (16.4 in.) or less to 512 mm (20.2in.) or more <input type="checkbox"/> Low = includes 376 mm (14.8 in.) to 439 mm (17.3 in.) <input type="checkbox"/> Other = _____ <input type="checkbox"/> Fixed = between 417 mm (16.4 in.) to 512 mm (20.2 in.)
		Rotary Stool with backrest	<input checked="" type="checkbox"/> Adjustable = includes range from 580 mm (23 in.) to 840 mm (33 in.) <input type="checkbox"/> Fixed = equal or greater than 670 mm (27.5 in)

Solicitation No.:
5P420-22-0288/A

Amendment No.:
00

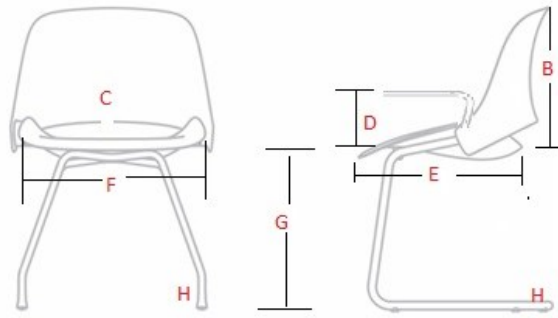
Contracting Authority:
Andrea McGraw-Alcock

Client Reference No.:
n/a

Title:
Office Seating, Parks Canada Collections and Curatorial Centre, QC

H	<p><i>Tilt Mechanism</i> choose only 1</p>	<p><input type="checkbox"/> Tilt Mechanism <i>seat and backrest adjust together in a ratio that falls within $\geq 1:1$ (includes both Synchro-Tilt and Unison Tilt)</i> <input type="checkbox"/> Tilt Independently <i>seat and backrest adjust independently of each other</i> <input checked="" type="checkbox"/> No preference</p>						
I	<p><i>Seat and Backrest Locks</i> choose ALL that are acceptable</p>	<p><input checked="" type="checkbox"/> Setup Position = <i>chair locks or stops at one position with seat flat and backrest straight</i> <input checked="" type="checkbox"/> Multiple Positions = <i>chair locks or stops at multiple positions (including setup position)</i></p>						
J	<p><i>Casters</i></p>	<p><input type="checkbox"/> carpet <input checked="" type="checkbox"/> hard surface</p>						
L	<p><i>Foot Ring</i></p>	<p><i>Standard with stool models only</i></p>						
	<p><i>Finishes (Upholstery/ Non-Upholstery)</i> choose ALL that are acceptable</p>	<table border="1"> <tr> <td data-bbox="375 499 532 562">Backrest</td> <td data-bbox="532 499 906 562"> <input checked="" type="checkbox"/> Upholstery <input checked="" type="checkbox"/> Breathable material (Mesh) </td> <td data-bbox="906 499 1505 562"> <input type="checkbox"/> Other = _____ </td> </tr> <tr> <td data-bbox="375 562 532 636">Seat</td> <td data-bbox="532 562 906 636"> <input checked="" type="checkbox"/> Upholstery <input checked="" type="checkbox"/> Breathable material (Mesh) </td> <td data-bbox="906 562 1505 636"> <input type="checkbox"/> Other = _____ </td> </tr> </table>	Backrest	<input checked="" type="checkbox"/> Upholstery <input checked="" type="checkbox"/> Breathable material (Mesh)	<input type="checkbox"/> Other = _____	Seat	<input checked="" type="checkbox"/> Upholstery <input checked="" type="checkbox"/> Breathable material (Mesh)	<input type="checkbox"/> Other = _____
Backrest	<input checked="" type="checkbox"/> Upholstery <input checked="" type="checkbox"/> Breathable material (Mesh)	<input type="checkbox"/> Other = _____						
Seat	<input checked="" type="checkbox"/> Upholstery <input checked="" type="checkbox"/> Breathable material (Mesh)	<input type="checkbox"/> Other = _____						
	<p>Additional Criteria:</p>							

Table A3: Side Chair - Meeting Room



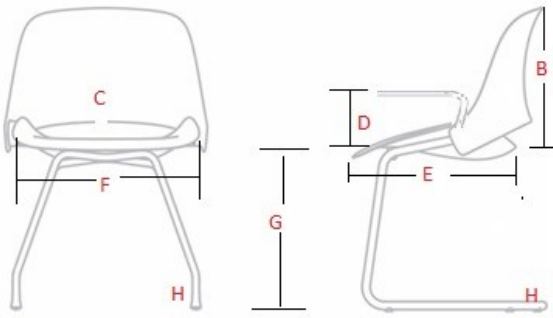
Side Chair	QTY: 30
-------------------	----------------

IMPORTANT:

Canada may request additional information to confirm criteria prior to contract award within a time period specified by the Identified User (IU).

	Criteria <i>Instructions</i>	Requirement Choices				
B	Backrest Height	Standard = <i>minimum height of 354 mm (13.9 in)</i>				
	Backrest Profile <i>choose only 1</i>	<input checked="" type="checkbox"/> No preference (<i>It is recommended to select "no preference" as profiles do not affect functionality of chair.</i>) <input type="checkbox"/> Other = _____				
C	Lumbar Support <i>choose only 1</i>	<input type="checkbox"/> Yes = height adjustment <i>between 150 mm (5.9 in.) to 250 mm (9.8 in.)</i> <input checked="" type="checkbox"/> No				
D	Armrests <i>choose only 1</i>	<input checked="" type="checkbox"/> Yes <input type="checkbox"/> No				
E	Seat Depth <i>choose only 1</i>	Fixed <table border="1" style="float: right; margin-left: 20px;"> <tr> <td><input type="checkbox"/> Shallow = <i>380 mm (15.0 in.) to 420 mm (16.5 in.)</i></td> </tr> <tr> <td><input checked="" type="checkbox"/> Medium = <i>greater than 420 mm (16.5 in.) to 460 mm (18.1 in.)</i></td> </tr> <tr> <td><input type="checkbox"/> Deep = <i>greater than 460 mm (18.1 in.)</i></td> </tr> </table>	<input type="checkbox"/> Shallow = <i>380 mm (15.0 in.) to 420 mm (16.5 in.)</i>	<input checked="" type="checkbox"/> Medium = <i>greater than 420 mm (16.5 in.) to 460 mm (18.1 in.)</i>	<input type="checkbox"/> Deep = <i>greater than 460 mm (18.1 in.)</i>	
<input type="checkbox"/> Shallow = <i>380 mm (15.0 in.) to 420 mm (16.5 in.)</i>						
<input checked="" type="checkbox"/> Medium = <i>greater than 420 mm (16.5 in.) to 460 mm (18.1 in.)</i>						
<input type="checkbox"/> Deep = <i>greater than 460 mm (18.1 in.)</i>						
F	Seat Width	Standard = <i>minimum width of 400 mm (15.7 in.)</i>				
G	Seat Height	Fixed = <i>between 417 mm (16.4 in.) and 512 mm (20.2 in.)</i>				
H	Stacking: <i>choose only 1</i>	<input checked="" type="checkbox"/> Stacking <input type="checkbox"/> Non-Stacking <input type="checkbox"/> No preference				
	Base Style	<input checked="" type="checkbox"/> Legs (4 post) <input checked="" type="checkbox"/> Casters <input type="checkbox"/> Glides <input type="checkbox"/> Sled <input type="checkbox"/> Cantilever <input type="checkbox"/> Other = _____				
	<i>choose ALL that are acceptable</i>					
	Finishes <i>(Upholstery / Non-Upholstery)</i>	<table border="1" style="width: 100%;"> <tr> <td style="width: 30%;">Backrest</td> <td> <input checked="" type="checkbox"/> Upholstery <input type="checkbox"/> Other = _____ <input checked="" type="checkbox"/> Breathable material (Mesh) </td> </tr> <tr> <td>Seat</td> <td> <input checked="" type="checkbox"/> Upholstery <input type="checkbox"/> Other = _____ <input checked="" type="checkbox"/> Breathable material (Mesh) </td> </tr> </table>	Backrest	<input checked="" type="checkbox"/> Upholstery <input type="checkbox"/> Other = _____ <input checked="" type="checkbox"/> Breathable material (Mesh)	Seat	<input checked="" type="checkbox"/> Upholstery <input type="checkbox"/> Other = _____ <input checked="" type="checkbox"/> Breathable material (Mesh)
	Backrest	<input checked="" type="checkbox"/> Upholstery <input type="checkbox"/> Other = _____ <input checked="" type="checkbox"/> Breathable material (Mesh)				
Seat	<input checked="" type="checkbox"/> Upholstery <input type="checkbox"/> Other = _____ <input checked="" type="checkbox"/> Breathable material (Mesh)					
	Additional Criteria:					

Table A4: Side Chair - Private Offices and Quiet Rooms



Side Chair	QTY: 12
-------------------	----------------

IMPORTANT:

Canada may request additional information to confirm criteria prior to contract award within a time period specified by the Identified User (IU).

	Criteria <i>Instructions</i>	Requirement Choices	
B	<i>Backrest Height</i>	Standard = <i>minimum height of 354 mm (13.9 in)</i>	
	<i>Backrest Profile</i> <i>choose only 1</i>	<input checked="" type="checkbox"/> No preference (<i>It is recommended to select "no preference" as profiles do not affect functionality of chair.</i>) <input type="checkbox"/> Other = _____	
C	<i>Lumbar Support</i> <i>choose only 1</i>	<input type="checkbox"/> Yes = <i>height adjustment between 150 mm (5.9 in.) to 250 mm (9.8 in.)</i> <input checked="" type="checkbox"/> No	
D	<i>Armrests</i> <i>choose only 1</i>	<input checked="" type="checkbox"/> Yes <input type="checkbox"/> No	
E	<i>Seat Depth</i> <i>choose only 1</i>	Fixed	<input type="checkbox"/> Shallow = <i>380 mm (15.0 in.) to 420 mm (16.5 in.)</i> <input checked="" type="checkbox"/> Medium = <i>greater than 420 mm (16.5 in.) to 460 mm (18.1 in.)</i> <input type="checkbox"/> Deep = <i>greater than 460 mm (18.1 in.)</i>
F	<i>Seat Width</i>	Standard = <i>minimum width of 400 mm (15.7 in.)</i>	
G	<i>Seat Height</i>	Fixed = <i>between 417 mm (16.4 in.) and 512 mm (20.2 in.)</i>	
H	<i>Stacking:</i> <i>choose only 1</i>	<input type="checkbox"/> Stacking <input type="checkbox"/> Non-Stacking <input checked="" type="checkbox"/> No preference	
	<i>Base Style</i> <i>choose ALL that are acceptable</i>	<input checked="" type="checkbox"/> Legs (4 post)	<input checked="" type="checkbox"/> Casters <input type="checkbox"/> Glides <input type="checkbox"/> Sled <input type="checkbox"/> Cantilever <input type="checkbox"/> Other = _____
	<i>Finishes</i> <i>(Upholstery / Non-Upholstery)</i> <i>choose ALL that are acceptable</i>	Backrest	<input checked="" type="checkbox"/> Upholstery <input type="checkbox"/> Other = _____ <input checked="" type="checkbox"/> Breathable material (Mesh)
		Seat	<input checked="" type="checkbox"/> Upholstery <input type="checkbox"/> Other = _____ <input checked="" type="checkbox"/> Breathable material (Mesh)
	<i>Additional Criteria:</i>		

**ANNEX B
BASIS OF PAYMENT**

1. Procurement Strategy

- Subcategory Procurement
- All-inclusive Procurement

2. Product and Pricing

INSTRUCTIONS TO BIDDERS: Bidders are to complete Sections B of the tables identified by the IU in this article as well as Tables 5, 8 and 9. **Bidders must provide a complete product offering for each Subcategory or All-inclusive Procurement.** In a resulting contract, the term “Bid” means the Supplier’s commitment, the term “Bidder” means “Contractor”.

BIDDER TO COMPLETE SECTION B – SUPPLIER’S BID IN ITS ENTIRETY.

Section A - IU REQUIREMENT			Section B – SUPPLIER’S BID		
Table	Title	Qty	Supplier Part Number	Firm Unit Price \$	Extended Total [Qty x Price] \$
A1	Rotary Chairs	36		\$	\$
A2	Rotary Stools	20		\$	\$
A3	Side Chairs: Meeting Rooms	30		\$	\$
A4	Side Chairs: Private Offices and Quiet Rooms	12		\$	\$
Product Total:					\$

Table 2 – Delivery

(Standard Lead time is between 6-10 weeks for furniture delivery and installation)

Section A - IU REQUIREMENT				Section B – SUPPLIER’S BID	
Product Item # from Table 1	Location	Desired Date** (YYYY-MM-DD)	Desired Time: Normal Business Hours Or Outside Normal Business Hours *	Supplier will supply and deliver as per below**	Firm Lot Price \$
A1, A2, A3, and A4.	Parks Canada Collections and Curatorial Centre 555 Av. des Entreprises Gatineau, QC J8R 2X5	[2023-07-31]	[Normal]	_____ : weeks <i>Standard Lead time is between 6-10 weeks for furniture delivery and installation.</i>	\$
*Normal Business Hours 8:00 – 17:00, as per SA, Annex A, article 5				Delivery Total:	\$
**The Project Authority (PA) will provide the supplier the authority to proceed prior to the finalized delivery date taking into consideration the delivery time provided by the supplier. Canada will not be responsible if the supplier chooses to proceed without the PA authorization.					

Table 3 – Installation
(Standard Lead time is between 6-10 weeks for furniture delivery and installation)

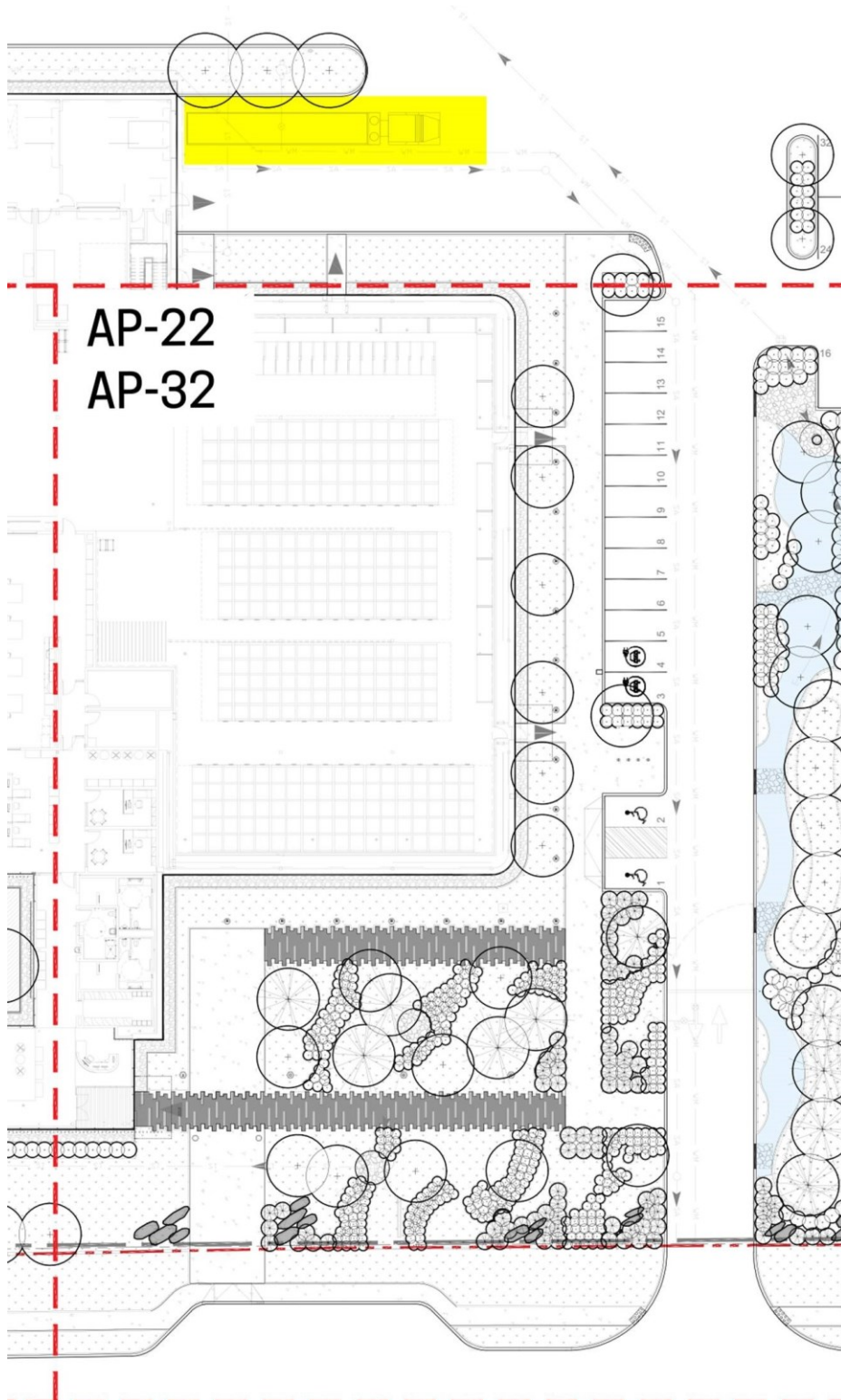
Section A - IU REQUIREMENT				Section B – SUPPLIER'S BID	
Product Item# from Table 1	Location	Desired Date** (YYYY-MM-DD)	Desired Time: Normal Business Hours Or Outside Normal Business Hours *	Supplier will install as per below**	Firm Lot Price \$
A1, A2, A3, and A4.	Parks Canada Collections and Curatorial Centre 555 Av. des Entreprises Gatineau, QC J8R 2X5	[2023-07-31]	[Normal]	_____ : weeks from date of supply and delivery <i>Standard Lead time is between 6-10 weeks for furniture delivery and installation.</i>	\$
*Normal Business Hours 8:00 – 17:00, as per SA, Annex A, article 5				Installation Total:	\$
**The Project Authority (PA) will provide the supplier the authority to proceed prior to the finalized installation date taking into consideration the installation time provided by the supplier. Canada will not be responsible if the supplier chooses to proceed without the PA authorization.					

- Table 4 – Optional Product** Not Applicable
Table 5 – Optional Delivery Not Applicable
Table 6 – Optional Installation Not Applicable

Table 7 – Standard Finishes and Canada’s Facilities to Accommodate the Delivery and Certifications

1.	Standard Finishes	
1.1	IU is to consult the Supplier’s Website identified in Part 6A of the SA to view the available finishes. Within ten business days of the contract award, the Project Authority will provide the Contractor with a written notice of Canada’s finish choices for each of the product(s) in Annex A. The Contractor will deliver the products corresponding to Canada’s choice of specific finishes(s). No additional charge will be applied to Canada.	
2.	Canada’s Facilities to Accommodate the Delivery	
	<i>The Supplier’s employees and subcontractors requiring access to the site must adhere to the health and safety plans established for the site, in addition to any laws in effect in the jurisdiction where the work is being performed.</i> <i>During the period of the contract, a representative of Canada or a service provider(s) under contract with the Government of Canada may request the list of employees and subcontractors requiring access to the site to perform the work and their security statuses. Information must be provided in the timeframe prescribed in order to ensure that the supply, delivery and installation of the furniture aligns with the master schedule.</i>	
2.1	Loading Dock/Location	
A	Location	Parks Canada Collections and Curatorial Centre 555 Av. des Entreprises Gatineau, QC J8R 2X5
B	Dock	Dock opening is 3.81 m x 4.35 m
C	Lift	Dock leveler. Dock
D	Door	Exterior door next to dock is 1 m x 2.15 m
E	Freight Elevator	None.

F	Other (specify, if any)	One office chair is to be installed in the Mechanical Room which is in the mezzanine area accessible only by two flights of stairs measuring 1 m x 2.14 m. There is sufficient room for a semi-truck for unloading furniture: see snapshot from architectural plans below:
---	-------------------------	---



Solicitation No.:
5P420-22-0288/A

Amendment No.:
00

Contracting Authority:
Andrea McGraw-Alcock

Client Reference No.:
n/a

Title:
Office Seating, Parks Canada Collections and Curatorial Centre, QC

3.	Continuance of Certifications
	The Bidder certifies that by submitting a bid in response to the RFB, the Bidder, and any of the Bidder's members if the Bidder is a Joint Venture, continues to comply with all of the following certifications listed in Parts 6A and 6B of the Bidder's SA for Work Spaces. Canada may request copies of environmental certification(s) prior to contract award within a time period specified by the Identified User.
3.1	Integrity Provisions
3.2	Federal Contractor's Program for Employment Equity
3.4	Product Conformance
3.5	Price Certification (In accordance with the SA, Part 6B)

Table 8 - Bid Evaluation and Contract Total

(Canada may complete if not completed by the Bidder)

1	Firm Product Total (Table 1)	\$
2	Firm Delivery Total (Table 2)	\$
3	Firm Installation Total (Table 3)	\$
4	Optional Product Total (Table 4) <i>(Applicable if Option is exercised)</i>	n/a
5	Optional Delivery Total (Table 5) <i>(Applicable if Option is exercised)</i>	n/a
6	Optional Installation Total (Table 6) <i>(Applicable if Option is exercised)</i>	n/a
7	Hardware Total as per article 1.5 of Annex A-1 of SA <i>(if Applicable)</i>	\$
8	Total Evaluated (Bid) Price* (1 + 2 + 3 + 4 + 5 + 6 + 7) <i>[to be removed at contract award]</i>	\$
9	Contract Price(1 + 2 + 3 + 7): <i>[applicable at contract award only]</i>	\$
10	Applicable Tax(es): <i>[applicable at contract award only]</i>	\$
11	Total Estimated Cost (9 + 10): <i>[applicable at contract award only]</i>	\$

* Applicable taxes extra.

Table 9 – Bidder's Authorized Representative

1.	Bidder's Authorized Representative for the Bid and the Contract	
	Name:	Telephone:
		E-Mail:
		PBN:
		Other: