

FIRE PLAN LEGEND/PLAN D'ÉVACUATION EN CAS D'INCENDIE LÉGENDE

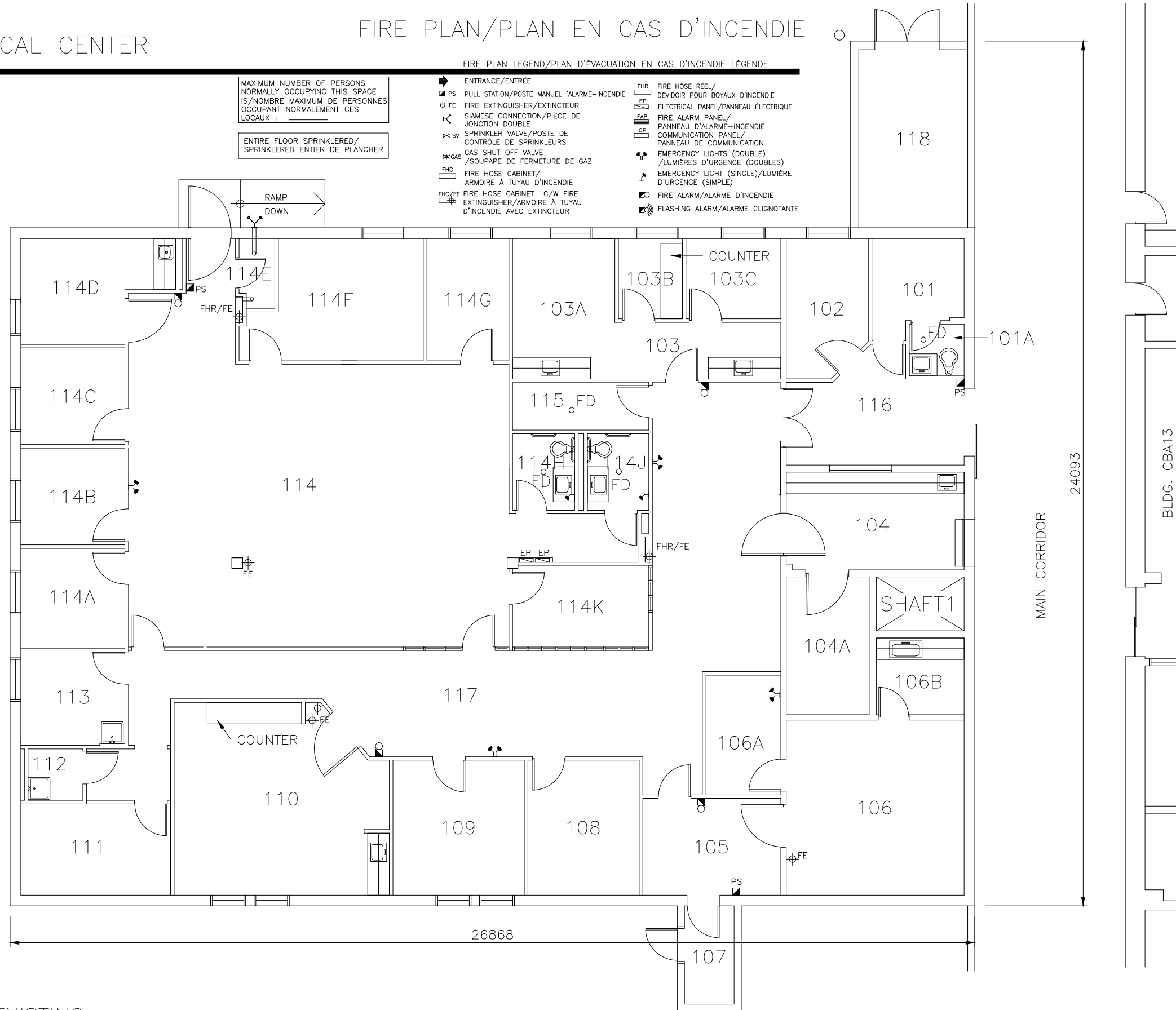
MAXIMUM NUMBER OF PERSONS
NORMALLY OCCUPYING THIS SPACE
IS/NOMBRE MAXIMUM DE PERSONNES
OCCUPANT NORMALEMENT CES
LOCAUX :

ENTIRE FLOOR SPRINKLERED/
SPRINKLERED ENTIER DE PLANCHER

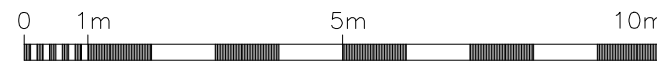
- ENTRANCE/ENTRÉE
- PS PULL STATION/POSTE MANUEL 'ALARME-INCENDIE
- FE FIRE EXTINGUISHER/EXTINCTEUR
- SIAMESE CONNECTION/PIÈCE DE JONCTION DOUBLE
- SV SPRINKLER VALVE/POSTE DE CONTRÔLE DE SPRINKLEURS
- GAS SHUT OFF VALVE /SOUPAPE DE FERMETURE DE GAZ
- FHC FIRE HOSE CABINET/ ARMOIRE À TUYAU D'INCENDIE
- FHC/FE FIRE HOSE CABINET C/W FIRE EXTINGUISHER/ARMOIRE À TUYAU D'INCENDIE AVEC EXTINCTEUR
- FHR FIRE HOSE REEL/ DÉVIDOIR POUR BOYAUX D'INCENDIE
- EP ELECTRICAL PANEL/PANNEAU ÉLECTRIQUE
- FAP FIRE ALARM PANEL/ PANNEAU D'ALARME-INCENDIE
- CP COMMUNICATION PANEL/ PANNEAU DE COMMUNICATION
- EMERGENCY LIGHTS (DOUBLE) /LUMIÈRES D'URGENCE (DOUBLES)
- EMERGENCY LIGHT (SINGLE)/LUMIÈRE D'URGENCE (SIMPLE)
- FIRE ALARM/ALARME D'INCENDIE
- FLASHING ALARM/ALARME CLIGNOTANTE

ROOM INDEX/LOGER L'INDICE

- 101 WAITING ROOM
- 101A INMATE WASHROOM/TOILETTES
- 102 WAITING ROOM
- 103 WAITING
- 103A DENTIST
- 103B WORK AREA
- 103C DENTIST OFFICE
- 104 DISPENSARY AREA
- 104A PHARMACEUTICAL STORAGE
- 105 WAITING AREA
- 106 X-RAY ROOM
- 106A SUPPORT ROOM
- 106B DARK ROOM
- 107 STORAGE
- 108 EXAMINATION ROOM
- 109 OFFICE/BUREAU
- 110 TREATMENT ROOM
- 111 MEDICAL SUPPLIES
- 112 JANITOR/CONCIERGE
- 113 OBSERVATION/PHYSIOTHERAPY ROOM
- 114 GENERAL OFFICE
- 114A OFFICE/BUREAU
- 114B OFFICE/BUREAU
- 114C OFFICE/BUREAU
- 114D LUNCH ROOM
- 114E MECHANICAL CLOSET
- 114F CHIEF HEALTH CARE OFFICE
- 114G CLERK'S OFFICE
- 114H MEN'S WASHROOM
- 114J WOMEN'S WASHROOM
- 114K BUSINESS CENTRE
- 115 COMPRESSOR/DENTISTRY STORAGE
- 116 CORRIDOR/CORRIDOR
- 117 CIRCULATION AREA
- 118 ELECTRICAL ROOM/LOCAL ÉLECTRIQUE



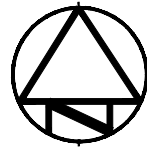
FIRST FLOOR PLAN/EXISTING



CBA14

MEDICAL CENTER

FIRE PLAN/PLAN EN CAS D'INCENDIE



ROOM INDEX/LOGER L'INDICE

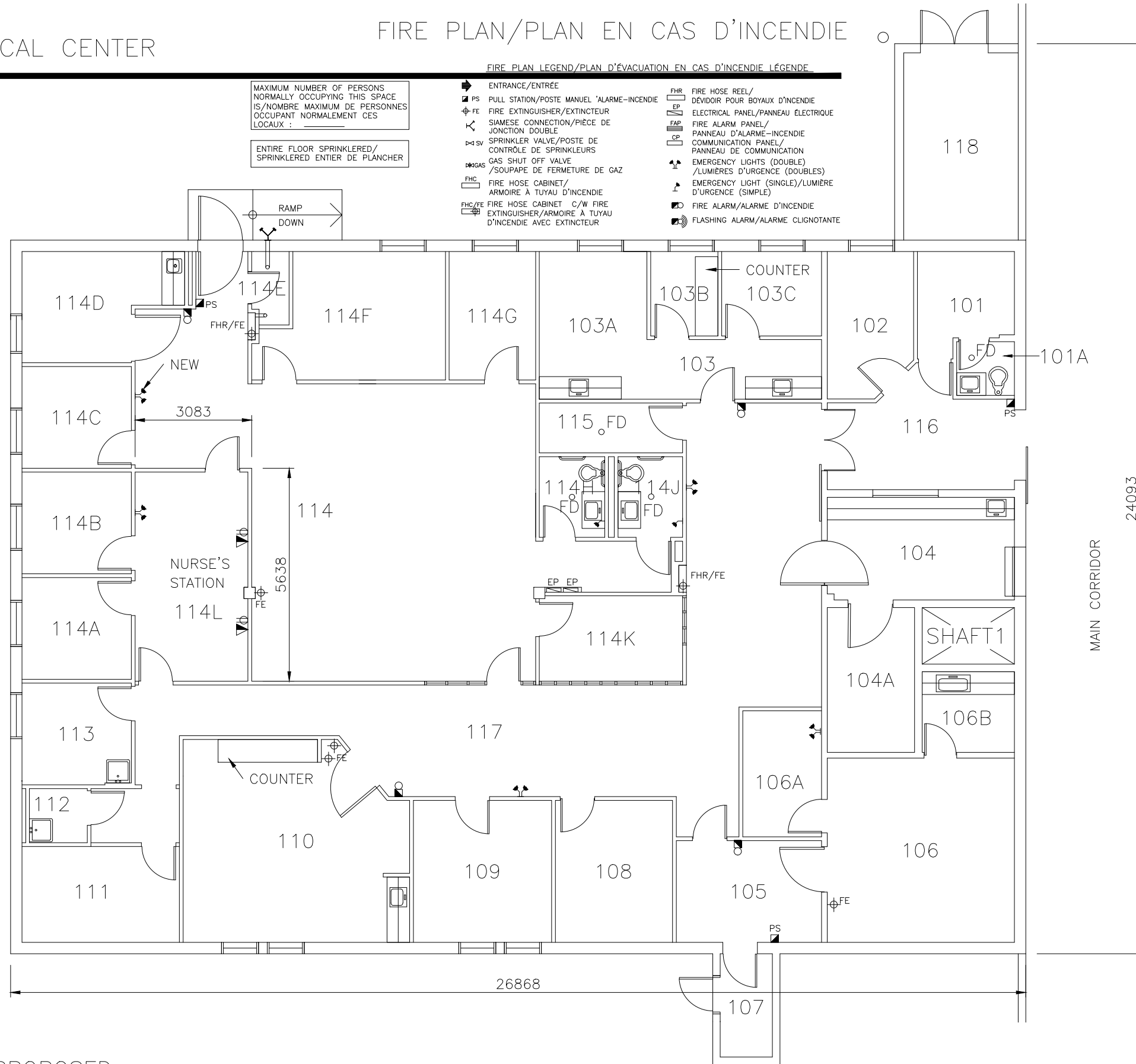
- 101 WAITING ROOM
- 101A INMATE WASHROOM/TOILETTES
- 102 WAITING ROOM
- 103 WAITING
- 103A DENTIST
- 103B WORK AREA
- 103C DENTIST OFFICE
- 104 DISPENSARY AREA
- 104A PHARMACEUTICAL STORAGE
- 105 WAITING AREA
- 106 X-RAY ROOM
- 106A SUPPORT ROOM
- 106B DARK ROOM
- 107 STORAGE
- 108 EXAMINATION ROOM
- 109 OFFICE/BUREAU
- 110 TREATMENT ROOM
- 111 MEDICAL SUPPLIES
- 112 JANITOR/CONCIERGE
- 113 OBSERVATION/PHYSIOTHERAPY ROOM
- 114 GENERAL OFFICE
- 114A INJECTION ROOM
- 114B INJECTION ROOM
- 114C OFFICE/BUREAU
- 114D LUNCH ROOM
- 114E MECHANICAL CLOSET
- 114F CHIEF HEALTH CARE OFFICE
- 114G CLERK'S OFFICE
- 114H MEN'S WASHROOM
- 114J WOMEN'S WASHROOM
- 114K BUSINESS CENTRE
- 114L NURSE'S STATION
- 115 COMPRESSOR/DENTISTRY STORAGE
- 116 CORRIDOR/CORRIDOR
- 117 CIRCULATION AREA
- 118 ELECTRICAL ROOM/LOCAL ÉLECTRIQUE

MAXIMUM NUMBER OF PERSONS
NORMALLY OCCUPYING THIS SPACE
IS/NOMBRE MAXIMUM DE PERSONNES
OCCUPANT NORMALEMENT CES
LOCAUX :

ENTIRE FLOOR SPRINKLERED/
SPRINKLERED ENTIER DE PLANCHER

FIRE PLAN LEGEND/PLAN D'ÉVACUATION EN CAS D'INCENDIE LÉGENDE

- | | | | |
|--------|--|-----|--|
| ➔ | ENTRANCE/ENTRÉE | FHR | FIRE HOSE REEL/
DÉVIDOIR POUR BOYAUX D'INCENDIE |
| PS | PULL STATION/POSTE MANUEL 'ALARME-INCENDIE | EP | ELECTRICAL PANEL/PANNEAU ÉLECTRIQUE |
| FE | FIRE EXTINGUISHER/EXTINCTEUR | FAP | FIRE ALARM PANEL/
PANNEAU D'ALARME-INCENDIE |
| ↔ | SIAMESE CONNECTION/PIÈCE DE
JONCTION DOUBLE | CP | COMMUNICATION PANEL/
PANNEAU DE COMMUNICATION |
| SV | SPRINKLER VALVE/POSTE DE
CONTRÔLE DE SPRINKLEURS | EL | EMERGENCY LIGHTS (DOUBLE)
/LUMIÈRES D'URGENCE (DOUBLES) |
| SGAS | GAS SHUT OFF VALVE
/SOUPAPE DE FERMETURE DE GAZ | EL | EMERGENCY LIGHT (SINGLE)/LUMIÈRE
D'URGENCE (SIMPLE) |
| FHC | FIRE HOSE CABINET/
ARMOIRE À TUYAU D'INCENDIE | FA | FIRE ALARM/ALARME D'INCENDIE |
| FHC/FE | FIRE HOSE CABINET C/W FIRE
EXTINGUISHER/ARMOIRE À TUYAU
D'INCENDIE AVEC EXTINCTEUR | FLA | FLASHING ALARM/ALARME CLIGNOTANTE |

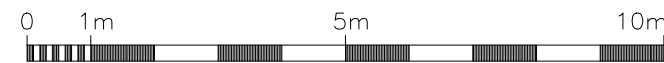


FIRST FLOOR PLAN/PROPOSED



Public Works
Canada
Ontario Region

Travaux publics
Canada
Région de l'Ontario



FILED: S:\...\CBA14-1.DWG
UPDATED: 01-12-04
PLOT SCALE: 1:150