

CCIW - MCC #11
LAMICOID NAME PLATES

CELL LOCATION	CELL LABEL		
	LINE 1	LINE 2	LINE 3
R1-2	P219 FUMEHOOD	LAMINAR FLOW FUMEHOOD	EXHAUST FAN
R1-3	SPARE		
R1-4	SPARE		
R1-5	SYSTEM #52	SUPPLY AIR FAN	
R1-6	GEF-2	1ST FLOOR LAB EXHAUST	LOCATED ON ROOF
R2-2	SYSTEM #51	SUPPLY AIR FAN	
R2-3	EF-2	CORRIDOR EXHAUST FAN	LOCATED IN PH
R2-4	SPARE		
R2-5	GEF	2ND FLOOR LAB EXHAUST FAN	LOCATED IN PH
R2-6	SPARE		
R2-7	SPARE		
R3-2	SPARE		
R3-3	SPARE		
R3-4	SPACE		
R3-5	SPACE		
R3-6	SPACE		
R3-7	SPARE		

- Notes:**
- All Cell Label lettering to be 0.25" in height, on a 2" x 2.5" lamicoïd plate.
 - Provide new 4" x 8" lamicoïd plate that reads "MCC #11" with lettering to be 1" in height. Mount on front top Centre of MCC #11. (R2-1)
 - Black background with white lettering.

KLOCKNER - MOELLER
WTC - MCC #11 - 600A / 600V / 3PH / 3W
FED FROM PANEL IN THE WTC PH SUB-STATION

R1-1	INCOMING CABLE SECTION	R2-1	R3-1	
NOTE 1		NOTE 1	NOTE 1	
R1-2 S-219 LAMINAR FLOW FUMEHOOD 30A DISC 15A FUSES	REPLACE EXTERNAL VFD 30HP	R2-2 SYSTEM #51 SUPPLY AIR FAN 30A DISC 30A FUSES	R3-2 SPARE 25A DISC SIZE 1 FVNR	
R1-3 SPARE 30A DISC		NOTE 2	R2-3 EF-2 15A BKR NO FUSES	R3-3 SPARE 25A DISC SIZE 1 FVNR
R1-4 SPARE 30A DISC		NOTE 2	R2-4 SPARE 30A DISC	NOTE 2
R1-5 SYSTEM #52 SUPPLY AIR FAN 50A DISC NO FUSES		REPLACE EXTERNAL VFD 15HP	R2-5 GEF 2ND FLOOR LAB EXHAUST 30A DISC 15A FUSES	R3-4 SPACE
R1-6 GEF-2 1ST FLOOR LAB EXHAUST 15A DISC NO FUSES			R2-6 SPARE 25A DISC	R3-5 SPACE
R1-7 SPACE			R2-7 SPARE 25A DISC	R3-6 SPACE
NOTE 1			R2-8 SPACE	R3-7 SPARE 50A DISC
NOTE 1			NOTE 2	

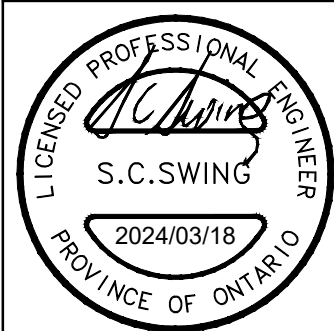
REPLACE EXTERNAL VFD 20HP

REPLACE EXTERNAL VFD 15HP

- NOTES:**
- PROVIDE NEW BLANK FRONT COVER PLATE.
 - REMOVE WIRING BACK TO SOURCE.
 - REMOVE BUCKET & WIRING BACK TO SOURCE.

COPYRIGHT
COPYRIGHT FOR ALL DESIGN AND DRAWINGS ARE THE EXPRESS PROPERTY OF NRG CONSULTANTS INC. REPRODUCTION OR USE FOR ANY PURPOSE OTHER THEN THAT AUTHORIZED BY NRG CONSULTANTS IS STRICTLY FORBIDDEN.

DIMENSIONS
CONTRACTOR SHALL VERIFY AND BE RESPONSIBLE FOR ALL DIMENSIONS. DO NOT SCALE DRAWINGS. CONTRACTOR SHALL REPORT ANY ERRORS OR OMISSIONS TO NRG CONSULTANTS INC. IMMEDIATELY UPON DISCOVERY.



NRG JOB # 2302
PROJECT
CANADA CENTRE FOR INLAND WATERS
MOTOR CONTROL CENTRE UPGRADE
867 LAKESHORE ROAD
BURLINGTON ON L7S 1A1

NRG Consultants Inc.
2 Cabriole Crescent Ancaster ON L9K 1K6
Office: (905) 304-0294

ELECTRICAL - MCC #11
EXISTING MCC #5 & #11
PROPOSED UPGRADES

No.	DATE	MADE	DESCRIPTION
0	2024/03/18	G.J.L.	ISSUED FOR TENDER
A	2024/01/10	G.J.L.	ISSUED FOR COMMENTS

REVISIONS/ADDENDA ISSUED

SCALE	DATE	DRAWN	CHECKED
N/A	2023/12/13	G.J.L.	S.C.S.

PROJECT No.	REV No.	DRAWING No.
1893	0	E02