

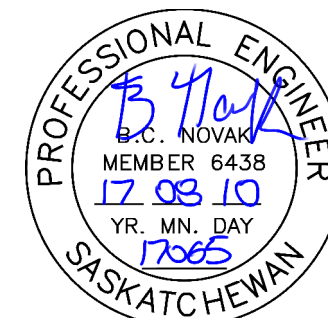
1 | FIRE ALARM MONITORING PANEL INSTALLATION DETAIL

E-1 | NTS

FIRE ALARM MONITORING PANEL INSTALLATION DETAIL NOTE LEGEND:

- 1 ULC LISTED FIRE ALARM MONITORING PANEL AS SPECIFIED. MOUNT UP 1200mm AFF TO BOTTOM OF PANEL. INSTALL MONITORING PANEL AT BUILDING TELEPHONE DEMARCATION POINT. REFER TO SPECIFICATIONS.
- 2 FIRE ALARM MONITORING PANEL PROGRAMMING KEYPAD. MOUNT UP 1350 mm AFF TO BOTTOM AND INSTALL 300mm FROM PANEL. REFER TO SPECIFICATIONS. INSTALL ON A SURFACE MOUNTED OUTLET BOX.
- 3 RUN WIRING FROM FIRE ALARM MONITORING PANEL TO KEYPAD IN SURFACE MOUNT EMT CONDUIT.
- 4 PROVIDE A VOICE CABLE AS SPECIFIED FROM BUILDING MAIN TELEPHONE SERVICE TO CA38A/RJ31X JACK IN 21mm EMT CONDUIT. ALLOW FOR A MINIMUM OF 15m CONDUIT AND CABLE, LEAVE 915mm CABLE TERMINATED AND COILED FOR ULC CERTIFIED INSTALLER TO CONNECT TO CA38A/RJ31X JACK.
- 5 PROVIDE A SINGLE GANG SURFACE OUTLET BOX C/W A 25mm GROMMETTED, BLANK COVER PLATE ADJACENT TO OWNERS MAIN TELEPHONE TERMINATION EQUIPMENT.
- 6 RUN TELEPHONE CABLE FREE-AIR FROM OUTLET BOX AND TERMINATE ON TERMINATION EQUIPMENT.
- 7 OWNERS MAIN TELEPHONE TERMINATION EQUIPMENT. CONFIRM LOCATION ON SITE.
- 8 PROVIDE ONE FIRE ALARM CABLE WITH MINIMUM THREE (3) PAIRS FROM MAIN FIRE ALARM PANEL TO FIRE ALARM MONITORING PANEL IN CONDUIT, ALLOW FOR A MINIMUM OF 30m OF EACH CABLE AND CONDUIT. MAIN FIRE ALARM CONTROL PANEL SHALL PROVIDE THE FOLLOWING OUTPUTS TO THE FIRE ALARM MONITORING PANEL:
 - GENERAL ALARM
 - TROUBLE
 - SUPERVISORY
- 9 MAIN FIRE ALARM CONTROL PANEL. CONFIRM LOCATION ON SITE.
- 10 PROVIDE 120V DIRECT CONNECTION TO FIRE ALARM MONITORING PANEL. RUN IN EMT CONDUIT FROM SOURCE. PROVIDE NEW 15A-1P BREAKER IN NEAREST AVAILABLE PANEL. ALLOW FOR A MINIMUM OF 30m OF CONDUIT AND WIRE.
- 11 CA38A/RJ31X JACK SUPPLIED WITH FIRE ALARM MONITORING PANEL AND INSTALLED BY ULC CERTIFIED INSTALLER. VOICE CABLING FROM CA38A/RJ31X JACK TO MONITORING PANEL SHALL BE SUPPLIED BY ELECTRICAL CONTRACTOR AND INSTALLED BY ULC CERTIFIED INSTALLER. INSTALL JACK 150mm FROM MONITORING PANEL OR LESS.
- 12 EXISTING TELEPHONE UTILITY DEMARCATION EQUIPMENT. CONFIRM LOCATION OF EQUIPMENT ON SITE.
- 13 CROSS CONNECT TELEPHONE PAIR INSTALLED BY TELEPHONE SERVICE PROVIDER. INSTALLATION COORDINATED BY ELECTRICAL CONTRACTOR.

ASSOCIATION OF PROFESSIONAL ENGINEERS
OF SASKATCHEWAN
CERTIFICATE OF AUTHORIZATION
ALFA ENGINEERING LTD.
NUMBER 14
PERMISSION TO CONSULT HELD BY:
DISCIPLINE SASK. REG. No. SIGNATURE
ELECTRICAL 6438 BH



PROJECT:

FIRE ALARM SYSTEM MONITORING

SHEET TITLE:

FIRE ALARM MONITORING PANEL INSTALLATION DETAIL

DRAWN BY:

TDC

CHECKED BY:

PLJ

PROJECT NUMBER:

17065

DATE:

August 10, 2017

SHEET NUMBER: