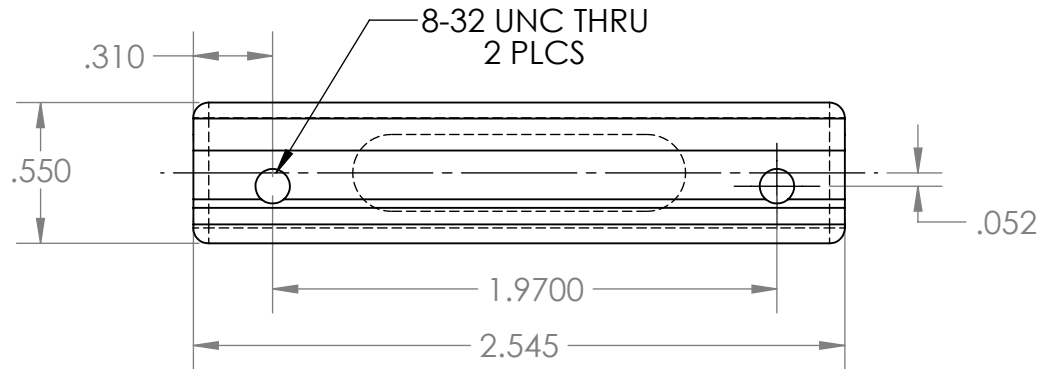
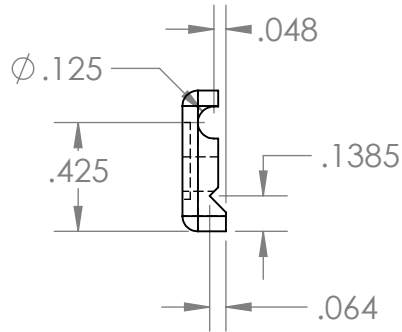
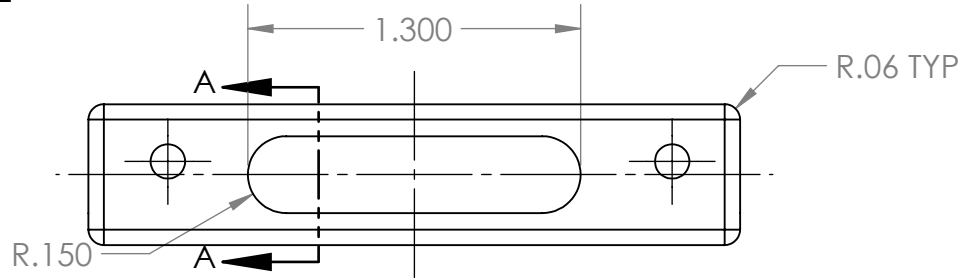
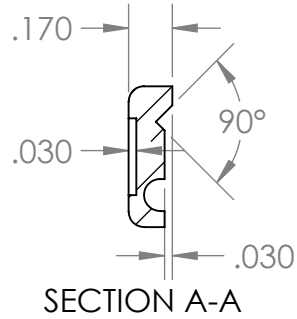
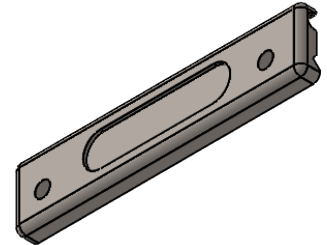


- BRAKE ALL SHARP EDGES .005-.015
- TOLERANCE DECIMAL  $\pm .005 \pm .0010$
- MATERIAL ALU-7075
- HARD COAT ANODIZE MIL-A-8625 TYPE III CLASS 2 , BLACK .002 SURFACE
- ALL TOLERANCE APPLY AFTER ANODIZE



**PROPRIETARY AND CONFIDENTIAL**  
 THE INFORMATION CONTAINED IN THIS DRAWING IS THE SOLE PROPERTY OF ROYAL CANADIAN MOUNTED POLICE. ANY REPRODUCTION IN PART OR AS A WHOLE WITHOUT THE WRITTEN PERMISSION OF ROYAL CANADIAN MOUNTED POLICE IS PROHIBITED.

		UNLESS OTHERWISE SPECIFIED:	NAME	DATE
		DIMENSIONS ARE IN INCHES	DRAWN	D.L
		TOLERANCES:	CHECKED	03/2022
		FRACTIONAL $\pm$	ENG APPR.	
		ANGULAR: MACH $\pm$ BEND $\pm$	MFG APPR.	
		TWO PLACE DECIMAL $\pm$	Q.A.	
		THREE PLACE DECIMAL $\pm$	COMMENTS:	
		INTERPRET GEOMETRIC TOLERANCING PER:		
		MATERIAL		
		<b>ALU 7075-T6</b>		
		FINISH		
NEXT ASSY	USED ON			
APPLICATION		DO NOT SCALE DRAWING		

<b>RCMP-GRC</b>		
TITLE:		
<b>SUREFIRE UE07 MOUNT CLAMP</b>		
SIZE	DWG. NO.	REV
<b>A</b>	<b>77005181</b>	
SCALE: 1:1	WEIGHT:	SHEET 1 OF 1