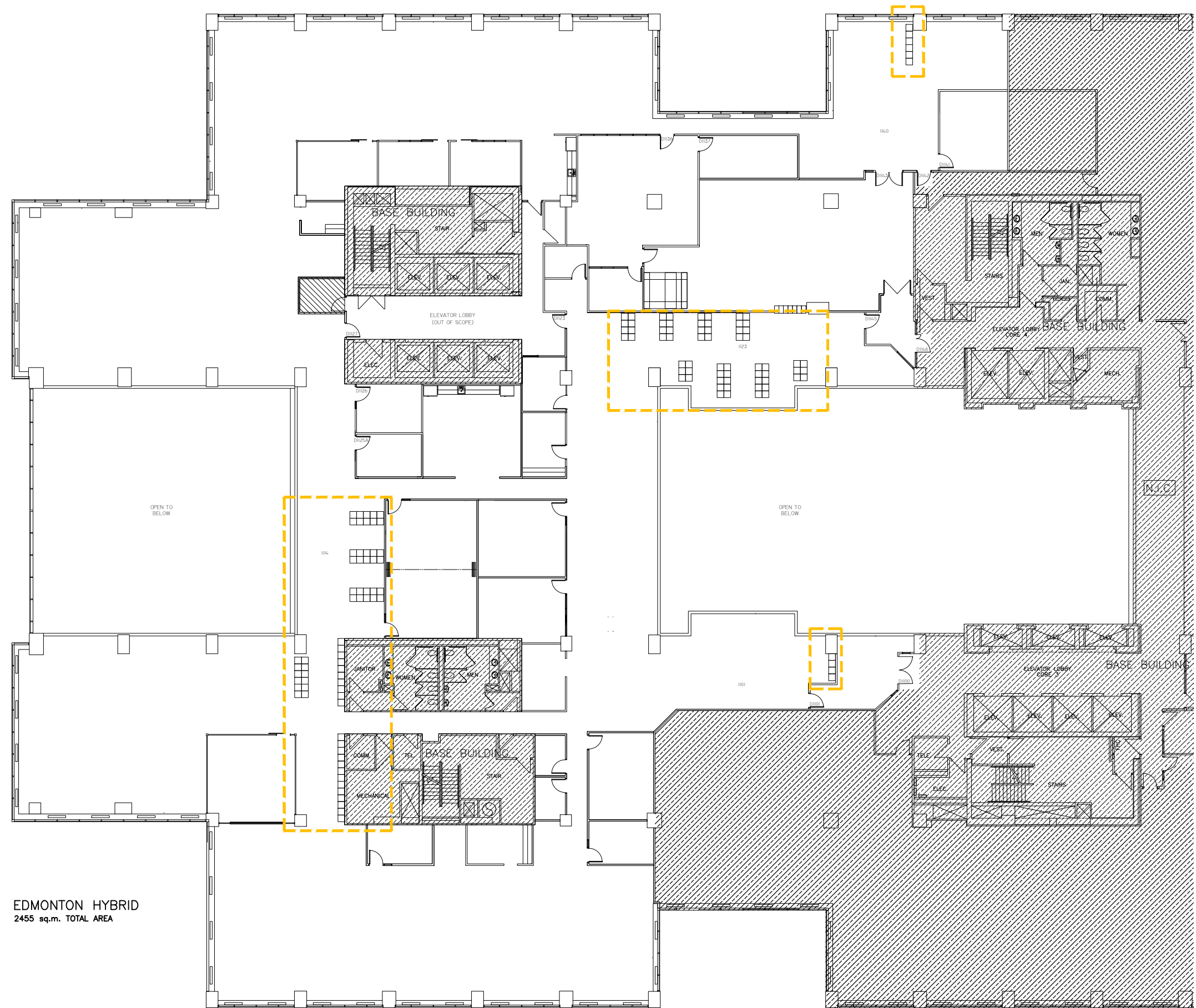


UNAUTHORIZED DISCLOSURE PROHIBITED



EDMONTON HYBRID
 2455 sq.m. TOTAL AREA

- GENERAL NOTES:
- All furniture related selections, purchases and installation coordination will be managed by TC planning team.
 - TC planning team will provide the necessary furniture specs that directly impact the renovation scope (electrical, etc).
 - Consultant to collaborate with TC planning team to develop all new millwork configurations and elevations if required. TC to approve final design and selections prior to fabrication.

revisions		date	
Project	TC CANADA PLACE REFIT		Project
9700 JASPER AVE. EDMONTON, ALBERTA			
Drawing	NEW FURNITURE PLAN		Desain
Designed by	VALÉRIE THÉRIEN	Conçu par	
Drawn by	VALÉRIE THÉRIEN	Desainé par	
Approved		Approuvé	
Scale	NTS	Date	DEC 12, 2023
Project number	(TC# ARTS-22-23-00678-07)		
Drawing number	FU01	No. du dessin	Page 1 OF 1