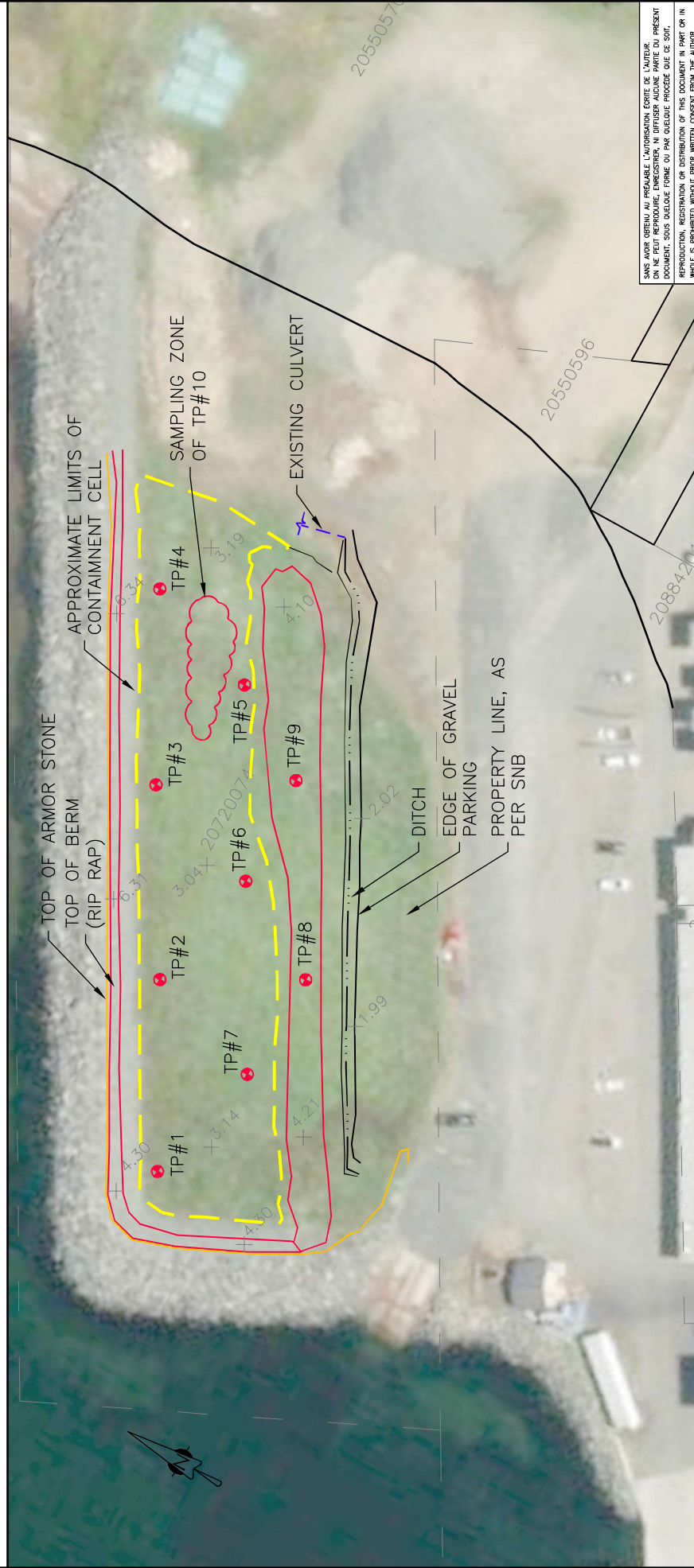



## **ANNEXE A**

### ***Information sur les sols***

- ELEVATIONS ARE BASED ON THE CHS BM 90B9023, ELEVATION +4.259m ABOVE CHART DATUM.
- TEST PIT LOCATIONS WERE SURVEYED BY ROY CONSULTANTS USING A LEICA GS14 GPS TO RECORD COORDINATES.
- THE COORDINATE SYSTEM USED FOR THE TEST PIT IS UTM NAD83 (CSRS) ZONE 20,
- NB CONTROL MONUMENT #22027 WAS USED AS REFERENCE BASE POINT.

TEST PIT	EASTING	NORTHING	CD ELEV. (m)	TEST PIT	EASTING	NORTHING	CD ELEV. (m)
1	375882.127	5294695.220	2.90	5	375960.480	5294719.636	2.87
2	375910.604	5294709.573	2.90	6	375931.644	5294704.429	2.82
3	375938.987	5294725.021	2.86	7	375903.285	5294689.430	2.54
4	375968.169	5294739.430	2.64	8	375921.673	5294688.079	4.34
				9	375950.321	5294704.736	4.58



B	23/08/17	FINAL REPORT	R.T.	 3855, rue Principale Tracadie (NB) E1X1E2 T. / 506-395-6166 F. / 506-548-2207		project/projet	CONTAINMENT CELL SAMPLING PROGRAM, LAMEQUE, NB
A	23/07/11	FINAL REPORT	R.T.			title/titre	TEST PIT LOCATION PLAN
No.	date	revisions	by/par				
scale/echelle	date	drawn by/dessine par	check by/verifie par				
1:1000	AUGUST 2023	R. THIBODEAU	J. DAIGLE			No.:	175-23-FIGURE 2
						rev.	B



**SITE PHOTOGRAPHS**  
**Small Craft Harbour - Lameque, NB**



**Photo 1: Containment Cell - General View, facing northeast**



**Photo 2: Containment Cell - General View, facing northwest**



### SITE PHOTOGRAPHS Small Craft Harbour - Lameque, NB



**Photo 3: Sampling Location TP1**



**Photo 4: Composite Sample TP1**



**Photo 5: Sampling Location TP2**



**Photo 6: Composite Sample TP2**



**SITE PHOTOGRAPHS**  
**Small Craft Harbour - Lameque, NB**



**Photo 7: Sampling Location TP3**



**Photo 8: Composite Sample TP3**



**Photo 9: Sampling Location TP4**



**Photo 10: Composite Sample TP4**



**SITE PHOTOGRAPHS**  
**Small Craft Harbour - Lameque, NB**



**Photo 11: Sampling Location TP5**



**Photo 12: Composite Sample TP5**



**Photo 13: Sampling Location TP6**



**Photo 14: Composite Sample TP6**



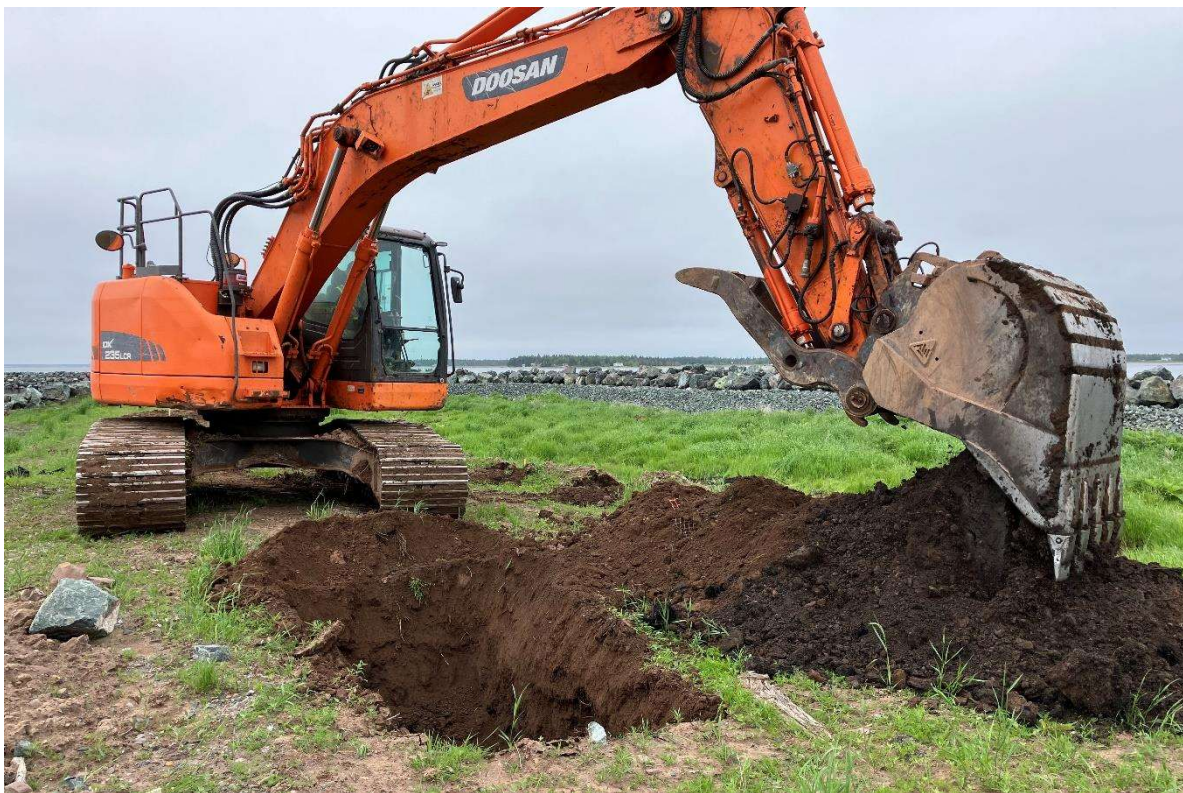
**SITE PHOTOGRAPHS**  
**Small Craft Harbour - Lameque, NB**



**Photo 15: Sampling Location TP7**



**Photo 16: Composite Sample TP7**



**Photo 17: Sampling Location TP8**



**SITE PHOTOGRAPHS**  
**Small Craft Harbour - Lameque, NB**



**Photo 18: Sampling Location TP9**



**SITE PHOTOGRAPHS**  
**Small Craft Harbour - Lameque, NB**



**Photo 19: Sampling Location TP10**



**Photo 20: Composite Sample TP10**



## **ANNEXE B**

### *Dessins*



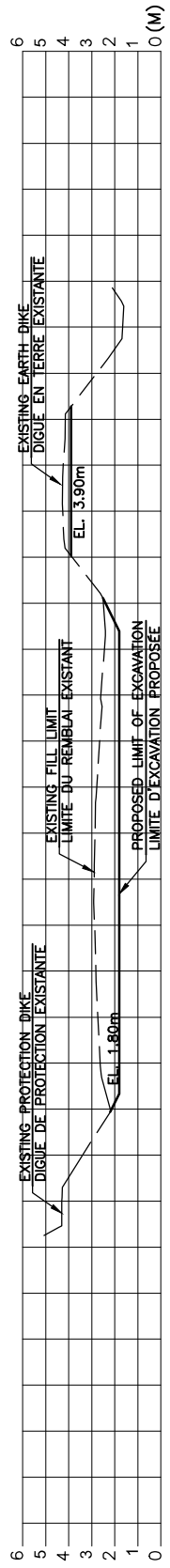


A DETAIL NO. 1  
 B LOCATION PLANNING NO.  
 C DRAWING NO.  
 DESIN NO.

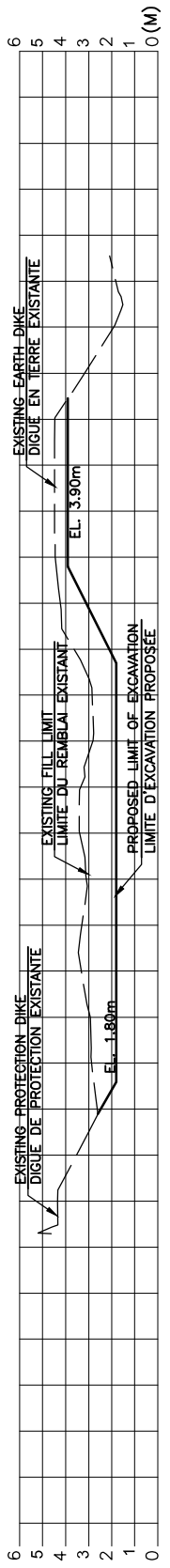
ALL RIGHTS RESERVED. NO PART OF THIS DOCUMENT MAY BE REPRODUCED OR TRANSMITTED IN ANY FORM OR BY ANY MEANS, ELECTRONIC OR MECHANICAL, INCLUDING PHOTOCOPYING, RECORDING, OR BY ANY INFORMATION STORAGE AND RETRIEVAL SYSTEM, WITHOUT PERMISSION IN WRITING FROM ROY CONSULTANTS.

3855, rue Principale Tracadie (NB), EMI 1E2 <b>ROY CONSULTANTS</b> ENGINEERING SERVICES D'INGÉNIERIE		title/titre SITE PLAN PLAN DU SITE	
project/projet EMPTY CONTAINMENT CELL / VIDER LA CELLULE DE CONFINEMENT		check by/verifié par B. COMEAU	
design by/conçu par B. COMEAU		date SEPT. 2023	
scale/échelle 1:750		drawn by/dessiné par R. THIBODEAU	
No. 0		No.: C2-00697 (338-23-SK1)	
date 23/09/22		R.T.	
date 23/09/09		R.T.	
revisions		by/par	





SECTION A-A



SECTION B-B

A DETAIL No.  
 B LOCATION DRAWING No.  
 C DRAWING No.  
 D SECTION No.

3855, rue Principale  
 Tracadie (NB) E1K 1E2  
 T. / 506-395-6166  
 F. / 506-548-2207



0 23/09/22 ISSUED FOR TENDER / ÉMIS POUR SOUMISSION R.T.		project/projet EMPTY CONTAINMENT CELL / VIDER LA CELLULE DE CONFINEMENT design by/dessin par B. COMEAU check by/verifie par B. COMEAU		title/titre TYPICALS SECTIONS SECTIONS TYPIQUES	
A 23/09/09 ISSUED FOR APPROVAL/ ÉMIS POUR APPROBATION R.T.		scale/echelle 1:200 date SEPT. 2023		No.: C2-00697 (338-23-SK2)	
No. revisions by/par		drawn by/dessine par R. THIBODEAU		rev. 0	