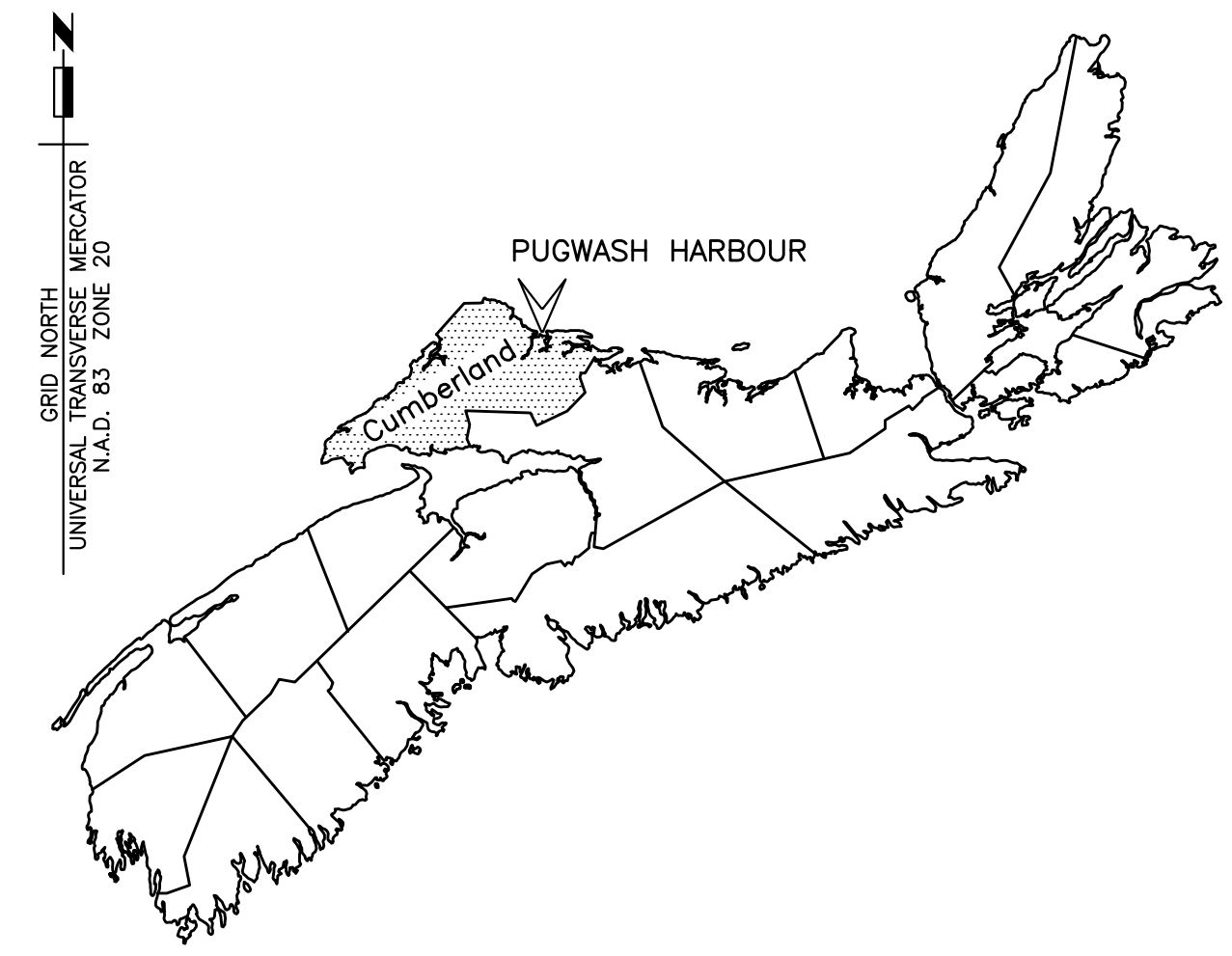


**Fisheries and Oceans  
Canada**

**Small Craft Harbours  
Maritimes / Gulf Region**

**Pêches et Océans  
Canada**

**Ports pour Petits Bateaux  
Région des Maritimes / Golfe**



MAP OF NOVA SCOTIA

# FLOATING WHARF INSTALLATION PUGWASH CUMBERLAND COUNTY NOVA SCOTIA

PROJECT NO. C2-00517

ISSUED FOR TENDER MARCH 31, 2022

## DRAWING LIST

	COVER SHEET
1 OF 6	EXISTING CONDITIONS & DREDGE LIMITS
2 OF 6	SITE PLAN GENERAL ARRANGEMENT OF NEW WORK
3 OF 6	SITE SECTIONS & REINFORCED CONCRETE DETAILS
4 OF 6	NEW STEEL STRONG ARM AND CONNECTIONS - PLAN, ELEVATION, SECTION AND DETAILS
5 OF 6	NEW ALUMINUM GANGWAY - PLAN, SECTIONS AND DETAILS
6 OF 6	NEW FLOAT ASSEMBLY GENERAL ARRANGEMENT - PLAN, SECTIONS AND DETAILS

**Canada**



**SURVEY NOTES**

SURVEY PARTY CHIEF: DARRYL GREEN  
 SURVEY VESSEL: SCOTIA SURVEYOR  
 SURVEY DATE(S): AUGUST 30TH & 31ST 2017  
 SOUNDER TYPE: ROSS SWEEP SYSTEM  
 SOUNDER SETTING: VEL. OF SOUND 1505 m/s  
 DEPTH GATE USED: N/A  
 FRE. OF TRANS. 190-210 kHz  
 POSITIONING SYSTEM USED: DGPS TRIMBLE 5700  
 LAND SURVEY POSITION BY: TRIMBLE 5700  
 RAW DATA FILE(S): PUG243.ZIP  
 CAD DRAWING FILE(S): PUG243AT.DWG  
 TIDAL REDUCTION SCHEME: C.H.S. BM 00N9006, ELEVATION +5.067 ABOVE CHART DATUM

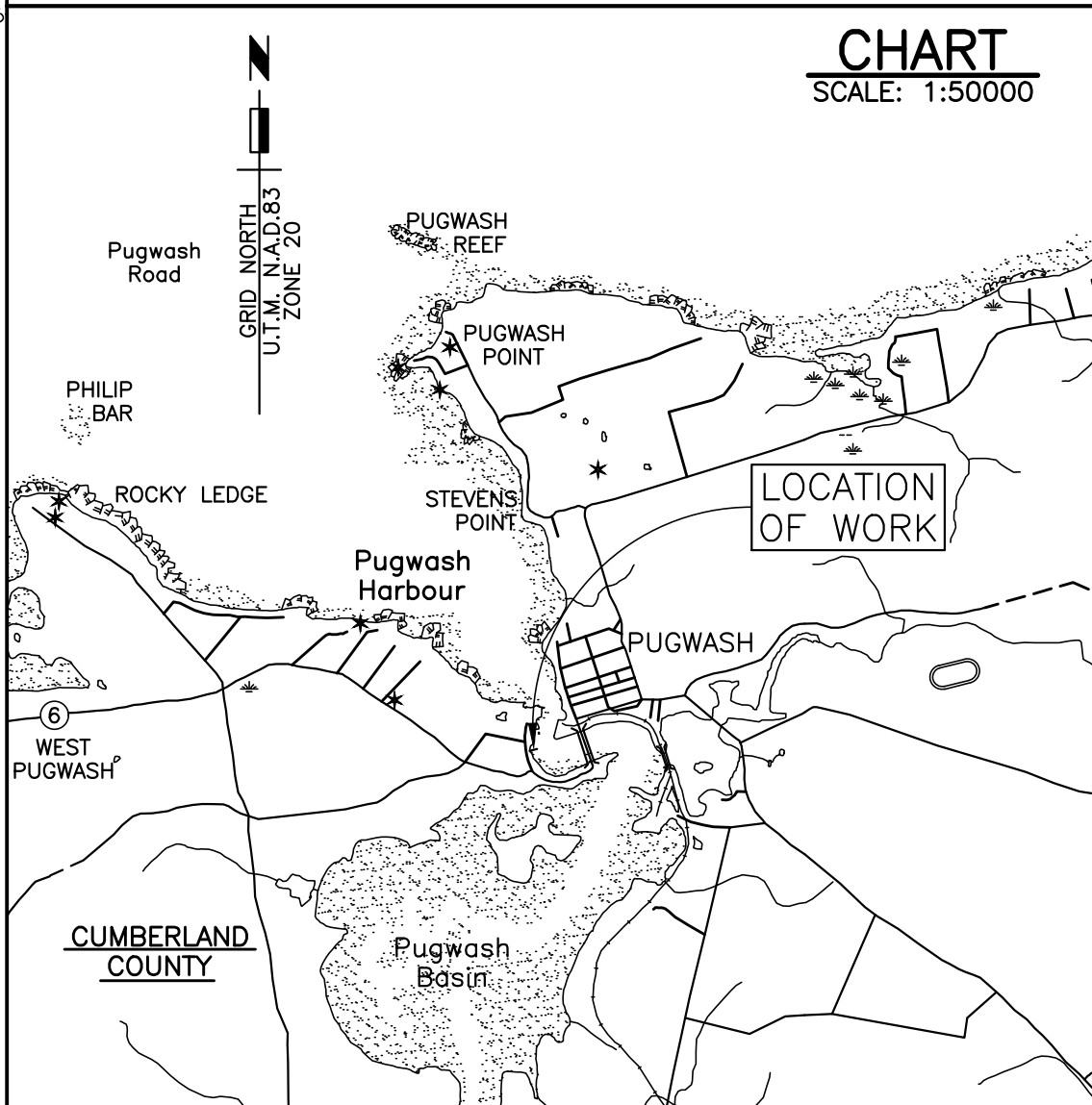
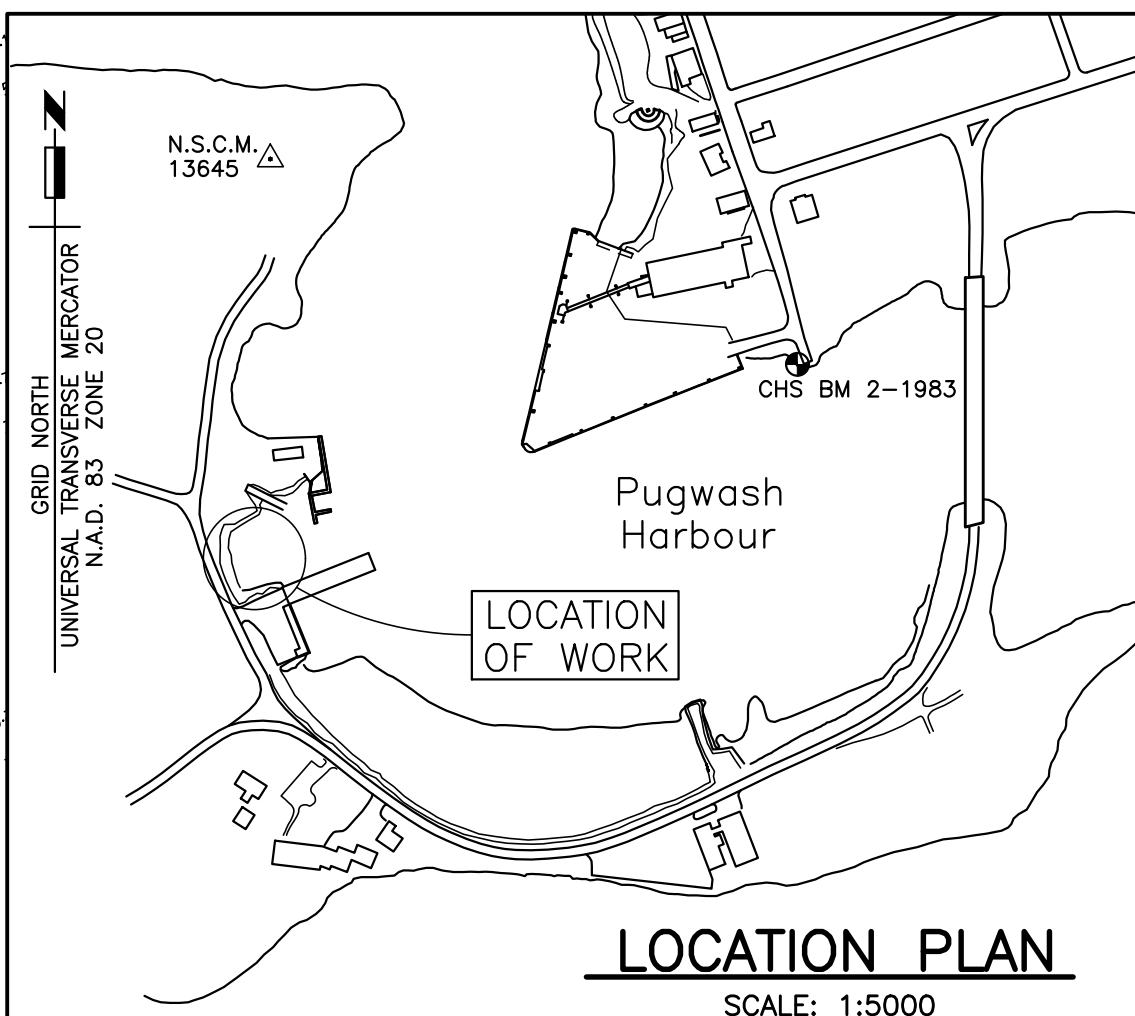
OFFICE PROCESSOR: DAVID MELANSON  
 DATE OF PROCESSING: SEPTEMBER 6, 2017  
 MODE OF PLOTTING: AVERAGE  
 MATRIX CELL WIDTH X LENGTH: 1.2m x 3.0m  
 CONTROL POINTS:  
 POINT NAME EASTING NORTHING CD ELEV DESCRIPTION  
 13645 448191.043 5077551.253 +7.69 LRIS CONTROL  
 00N9006 N/A N/A +5.07 CHS

**GENERAL NOTES**

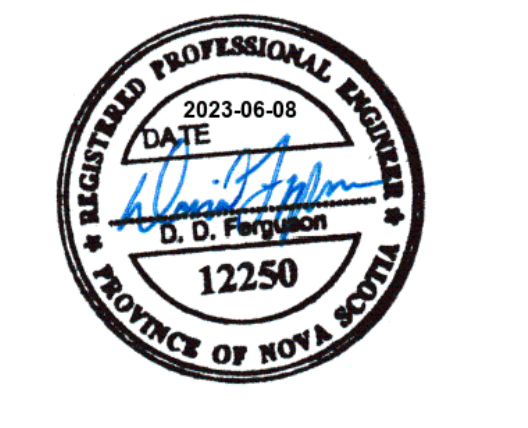
- THE WORK UNDER THIS CONTRACT CONSISTS OF, BUT IS NOT LIMITED TO, THE FOLLOWING:
  - DREDGING OF INDICATED AREA TO 2.00 METRES BELOW CHART DATUM AND DISPOSAL IN THE EXISTING CONTAINMENT CELL.
  - INSTALLATION OF A NEW CONTINUOUS RETAINING WALL INCLUDING REMOVAL AND REINSTATEMENT OF EXISTING ARMOURSTONE REVETMENT AND CORESTONE BERM.
  - CONSTRUCTION AND INSTALLATION OF FLOATING DOCKS, STRONGARMS AND GANGWAYS.
- GRID NORTH REFERS TO UNIVERSAL TRANSVERSE MERCATOR PROJECTION COORDINATES, NORTH AMERICAN DATUM 1983, ZONE 20.
- THE FIELD SURVEY WAS CARRIED OUT ON AUGUST 30TH & 31ST, 2017, BY PWGSC CREW. DATA VALID ONLY ON DATE TAKEN.
- ELEVATIONS REFER TO BENCHMARK CHS BM 2-1983 LOCATED AT THE OLD BRIDGE ABUTMENT, NEAR THE APPROACH ROAD TO THE OLD SALT WHARF, WHERE INDICATED ON LOCATION PLAN, WHICH HAS AN ELEVATION OF 5.808 METRES ABOVE CHART DATUM.
- CHART DATUM IS, BY INTERNATIONAL AGREEMENT, A PLANE BELOW WHICH THE TIDE WILL SELDOM FALL. THE CANADIAN HYDROGRAPHIC SERVICE HAS ADOPTED THE PLANE OF LOWEST NORMAL TIDE (L.N.T.) AS CHART DATUM. AS THE RISE, FALL AND RANGE OF TIDES VARIES DAILY, THE CANADIAN TIDE AND CURRENT TABLES, AS ISSUED BY THE CANADIAN HYDROGRAPHIC SERVICE, SHOULD BE CONSULTED FOR TIDAL PREDICTIONS AND OTHER TIDAL INFORMATION RELATING TO WORK.
- THE CONTRACTOR SHALL BE HELD TO HAVE VISITED THE SITE AND TO HAVE BECOME FAMILIAR WITH THE EXISTING CONDITIONS PRIOR TO COMMENCING WORK. IT IS THE RESPONSIBILITY OF THE CONTRACTOR TO INFORM THE ENGINEER IN WRITING OF ANY DISCREPANCIES BETWEEN EXISTING CONDITIONS AND THE PLAN BEFORE STARTING WORK.

**LEGEND**

- B.M. BENCHMARK
- 3.8 ELEVATION (Metres Above Chart Datum)
- 3.9 SOUNDINGS (Metres Below Chart Datum)
- PP UTILITY POLE



Fisheries and Oceans Pêches et Océans  
 Canada  
 Small Craft Harbours Ports pour Petits Bateaux  
 Maritimes/Gulf Region Région des Maritimes/Golfe

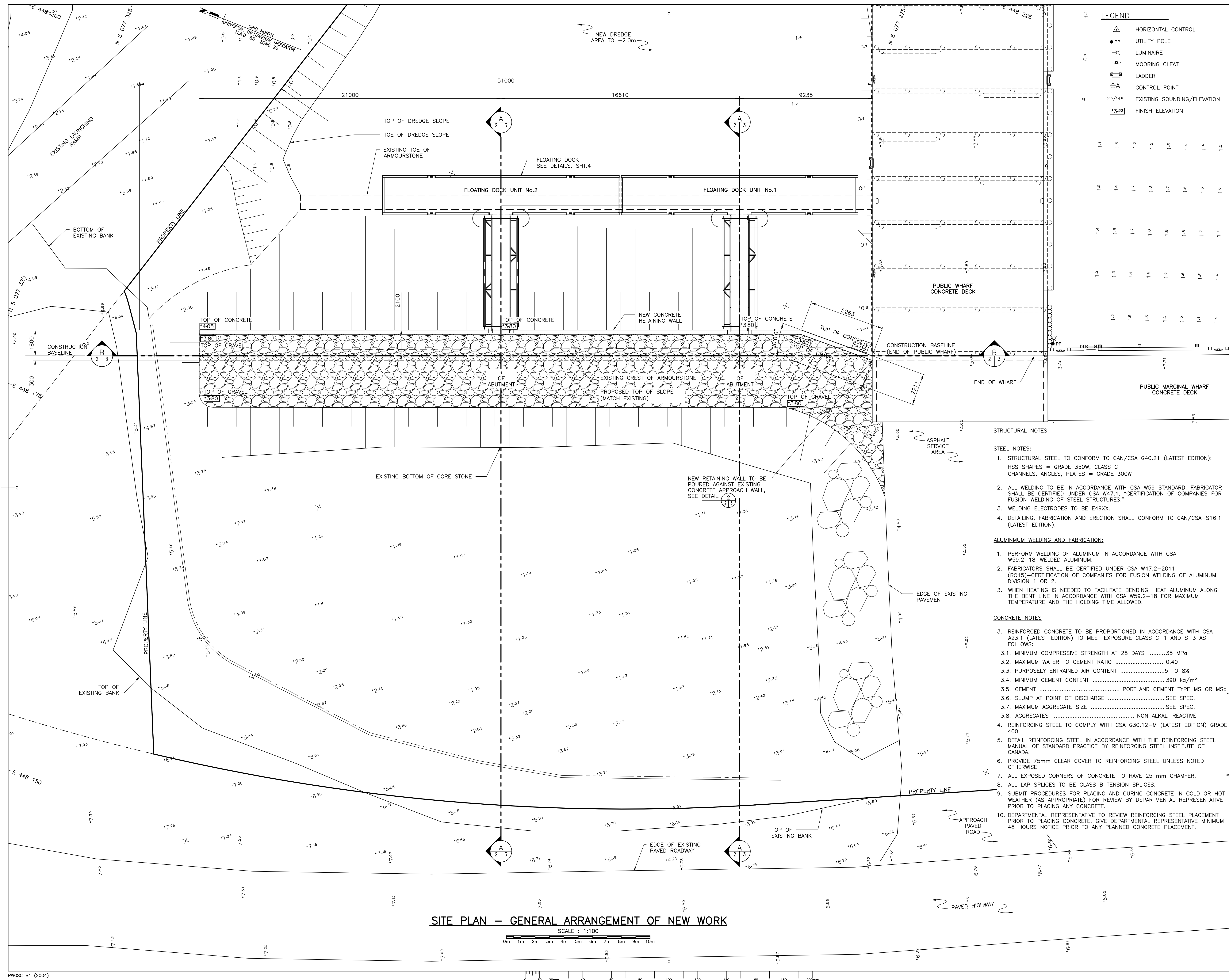


A	ISSUED FOR TENDER	Mar 31 2022
revisions		date
project		project

**FLOATING WHARF INSTALLATION  
 PUGWASH  
 CUMBERLAND COUNTY  
 NOVA SCOTIA**

**EXISTING CONDITIONS  
 & DREDGE LIMITS**

designed	D. FERGUSON	conqu
date	FEBRUARY 2022	
drawn	J. PEPPER	dessiné
date	FEBRUARY 2022	
approved		approuvé
date		
Tender		Soumission
PWGSC Project Manager	Administrateur de projets TPSCG	
project number		no. du projet
	<b>C2-00517</b>	
drawing no.		no. du dessin
	<b>1 of 6</b>	



**LEGEND**

	HORIZONTAL CONTROL
	UTILITY POLE
	LUMINAIRE
	MOORING CLEAT
	LADDER
	CONTROL POINT
	EXISTING SOUNDING/ELEVATION
	FINISH ELEVATION

Fisheries and Oceans Pêches et Océans  
Canada  
Small Craft Harbours Ports pour Petits Bateaux  
Maritimes/Gulf Region Région des Maritimes/Golfe



**STRUCTURAL NOTES**

**STEEL NOTES:**

- STRUCTURAL STEEL TO CONFORM TO CAN/CSA G40.21 (LATEST EDITION); HSS SHAPES = GRADE 350W, CLASS C CHANNELS, ANGLES, PLATES = GRADE 300W
- ALL WELDING TO BE IN ACCORDANCE WITH CSA W59 STANDARD. FABRICATOR SHALL BE CERTIFIED UNDER CSA W47.1, "CERTIFICATION OF COMPANIES FOR FUSION WELDING OF STEEL STRUCTURES."
- WELDING ELECTRODES TO BE E49XX.
- DETAILING, FABRICATION AND ERECTION SHALL CONFORM TO CAN/CSA-S16.1 (LATEST EDITION).

**ALUMINUM WELDING AND FABRICATION:**

- PERFORM WELDING OF ALUMINUM IN ACCORDANCE WITH CSA W59.2-18-WELDED ALUMINUM.
- FABRICATORS SHALL BE CERTIFIED UNDER CSA W47.2-2011 (R015)-CERTIFICATION OF COMPANIES FOR FUSION WELDING OF ALUMINUM, DIVISION 1 OR 2.
- WHEN HEATING IS NEEDED TO FACILITATE BENDING, HEAT ALUMINUM ALONG THE BENT LINE IN ACCORDANCE WITH CSA W59.2-18 FOR MAXIMUM TEMPERATURE AND THE HOLDING TIME ALLOWED.

**CONCRETE NOTES**

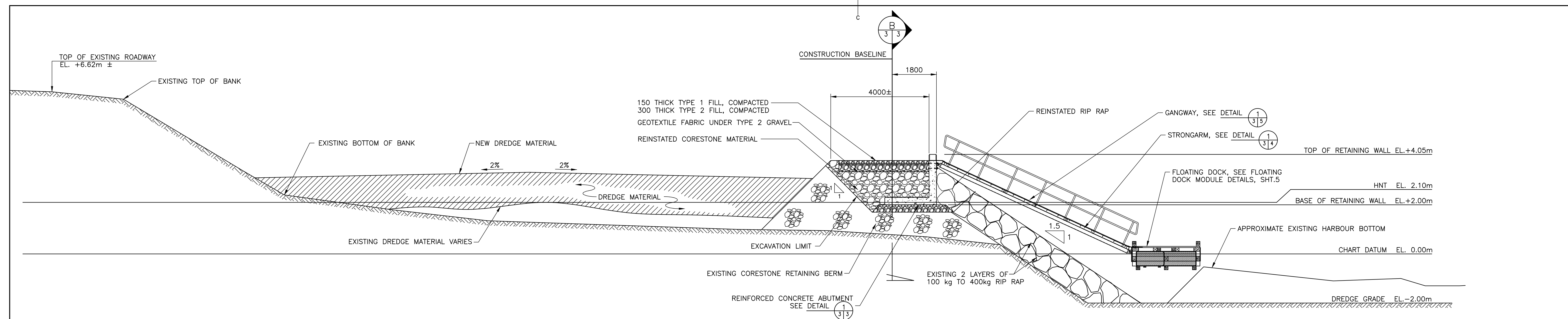
- REINFORCED CONCRETE TO BE PROPORTIONED IN ACCORDANCE WITH CSA A23.1 (LATEST EDITION) TO MEET EXPOSURE CLASS C-1 AND S-3 AS FOLLOWS:
  - MINIMUM COMPRESSIVE STRENGTH AT 28 DAYS .....35 MPa
  - MAXIMUM WATER TO CEMENT RATIO .....0.40
  - PURPOSELY ENTRAINED AIR CONTENT .....5 TO 8%
  - MINIMUM CEMENT CONTENT .....390 kg/m<sup>3</sup>
  - CEMENT ..... PORTLAND CEMENT TYPE MS OR MSB
  - SLUMP AT POINT OF DISCHARGE ..... SEE SPEC.
  - MAXIMUM AGGREGATE SIZE ..... SEE SPEC.
  - AGGREGATES ..... NON ALKALI REACTIVE
- REINFORCING STEEL TO COMPLY WITH CSA G30.12-M (LATEST EDITION) GRADE 400.
- DETAIL REINFORCING STEEL IN ACCORDANCE WITH THE REINFORCING STEEL MANUAL OF STANDARD PRACTICE BY REINFORCING STEEL INSTITUTE OF CANADA.
- PROVIDE 75mm CLEAR COVER TO REINFORCING STEEL UNLESS NOTED OTHERWISE.
- ALL EXPOSED CORNERS OF CONCRETE TO HAVE 25 mm CHAMFER.
- ALL LAP SPLICES TO BE CLASS B TENSION SPLICES.
- SUBMIT PROCEDURES FOR PLACING AND CURING CONCRETE IN COLD OR HOT WEATHER (AS APPROPRIATE) FOR REVIEW BY DEPARTMENTAL REPRESENTATIVE PRIOR TO PLACING ANY CONCRETE.
- DEPARTMENTAL REPRESENTATIVE TO REVIEW REINFORCING STEEL PLACEMENT PRIOR TO PLACING CONCRETE. GIVE DEPARTMENTAL REPRESENTATIVE MINIMUM 48 HOURS NOTICE PRIOR TO ANY PLANNED CONCRETE PLACEMENT.

A	ISSUED FOR TENDER	Mar 31 2022
revisions		date
project		project

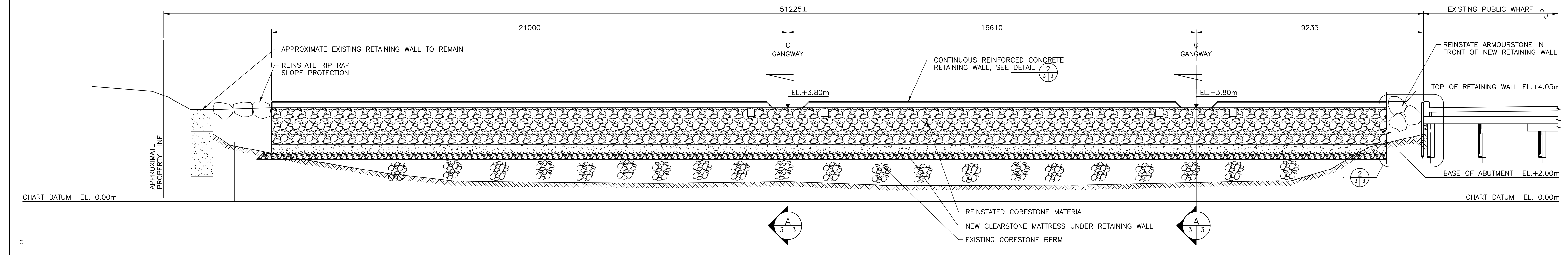
**FLOATING WHARF INSTALLATION  
PUGWASH  
CUMBERLAND COUNTY  
NOVA SCOTIA**

**SITE PLAN GENERAL  
ARRANGEMENT OF  
NEW WORK**

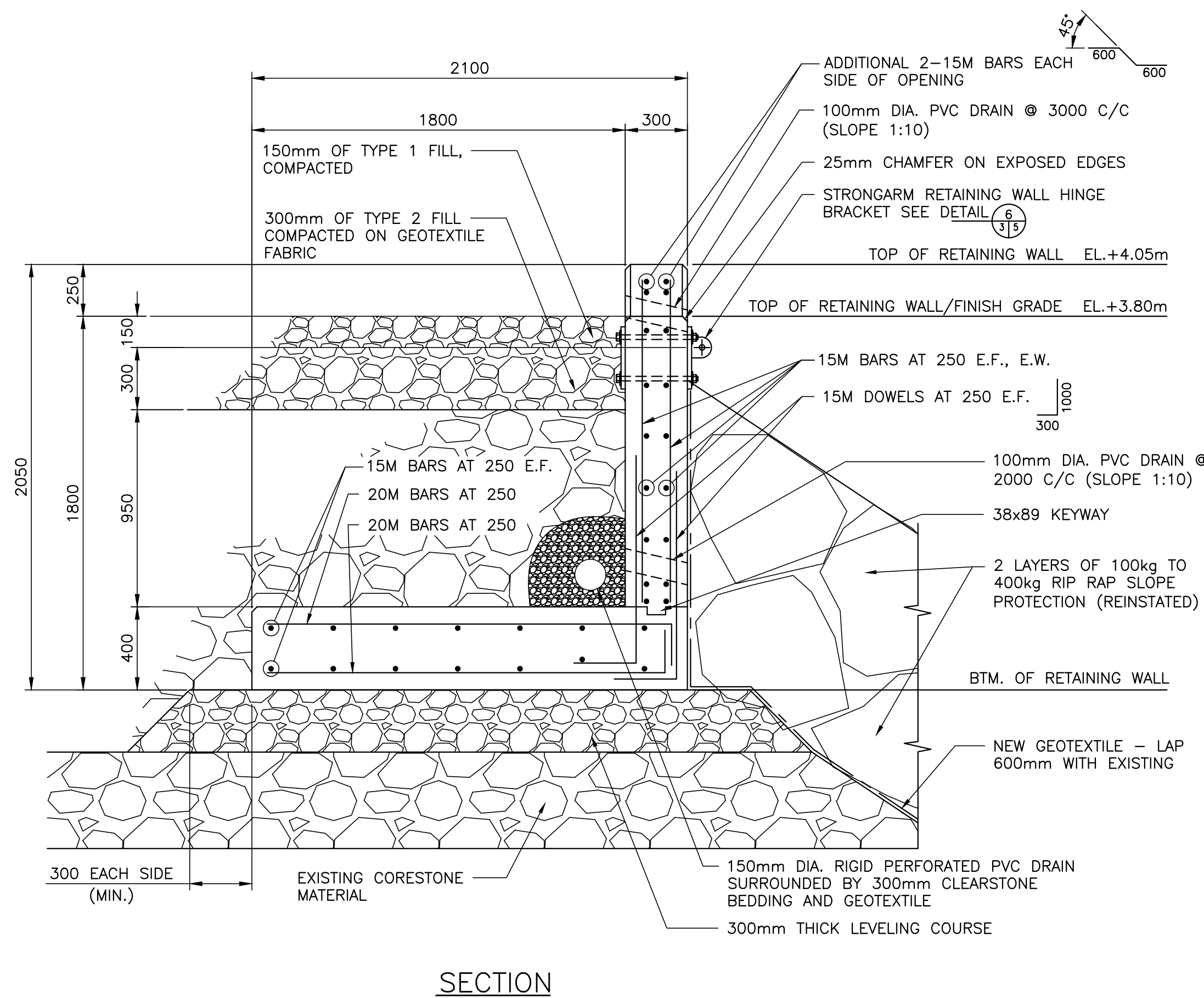
designed D. FERGUSON	conçu
date FEBRUARY 2022	
drawn	dessiné
date FEBRUARY 2022	
approved	approuvé
date	
Tender	Soumission
PWGSOC Project Manager Administrateur de projets TPWSOC	
project number	no. du projet
<b>C2-00517</b>	
drawing no.	no. du dessin
<b>2 of 6</b>	



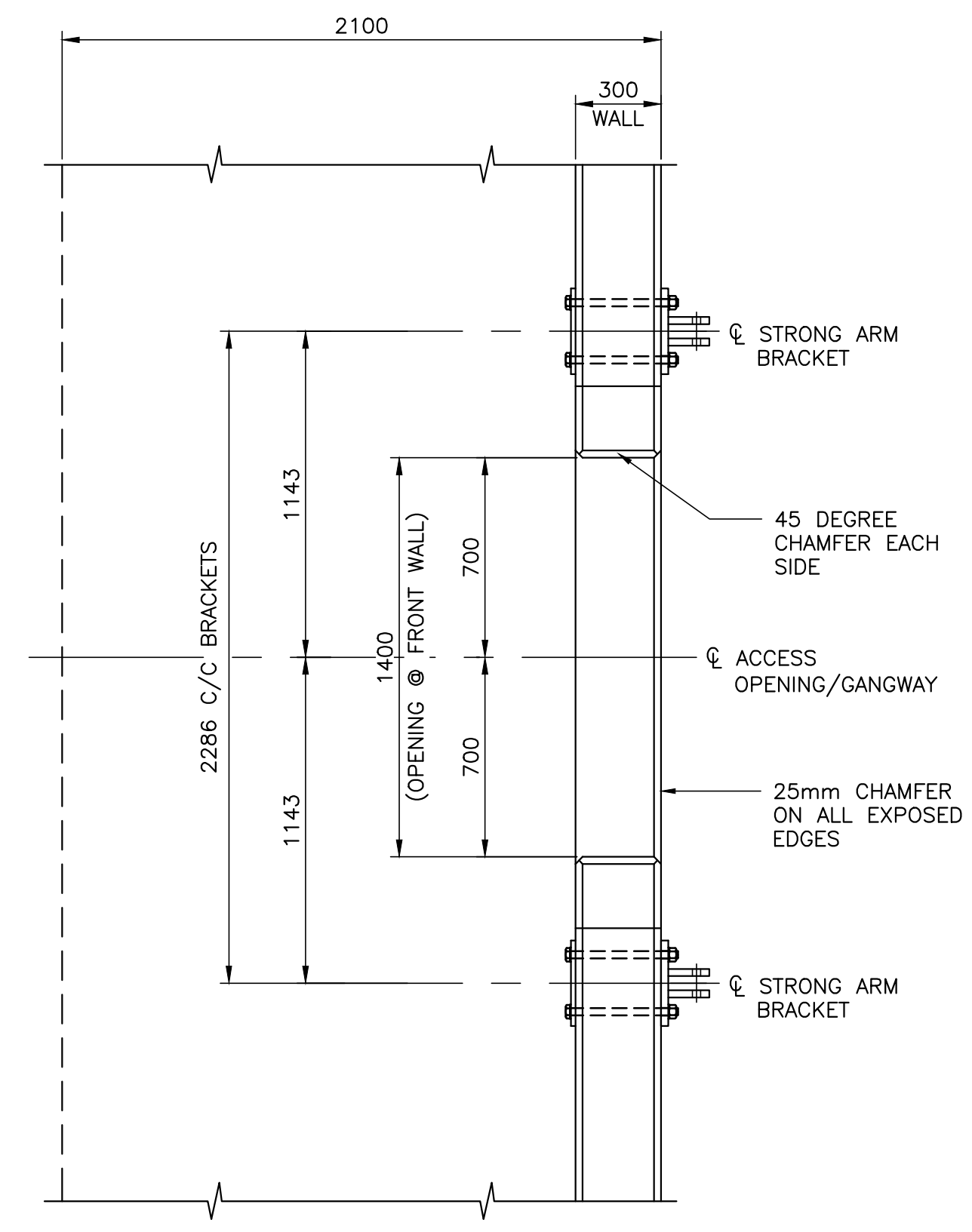
FLOATING DOCK INSTALLATION SECTION  
SCALE: 1:75



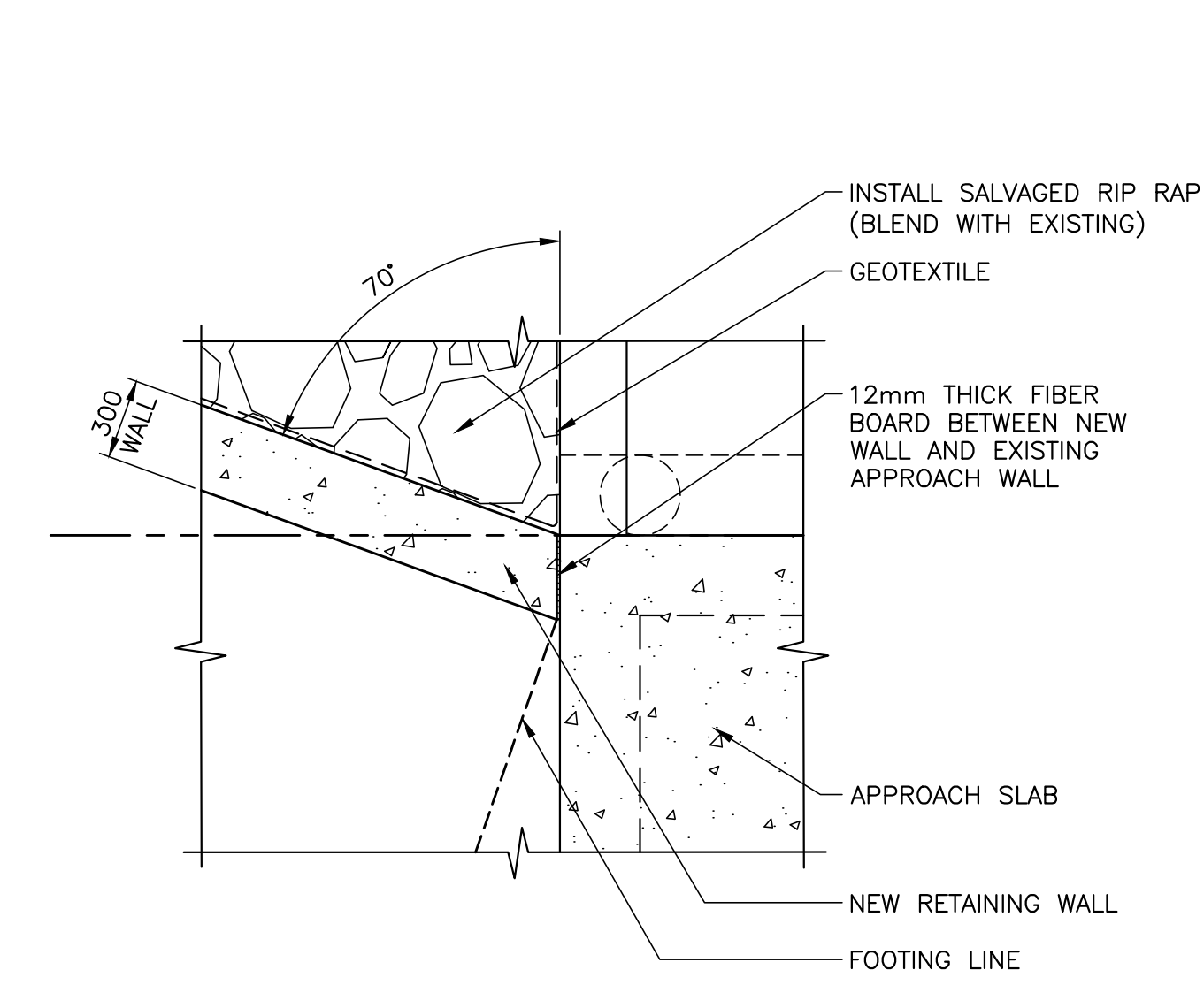
SERVICE AREA AND ABUTMENT PROFILE AT CONSTRUCTION BASELINE  
SCALE: 1:75



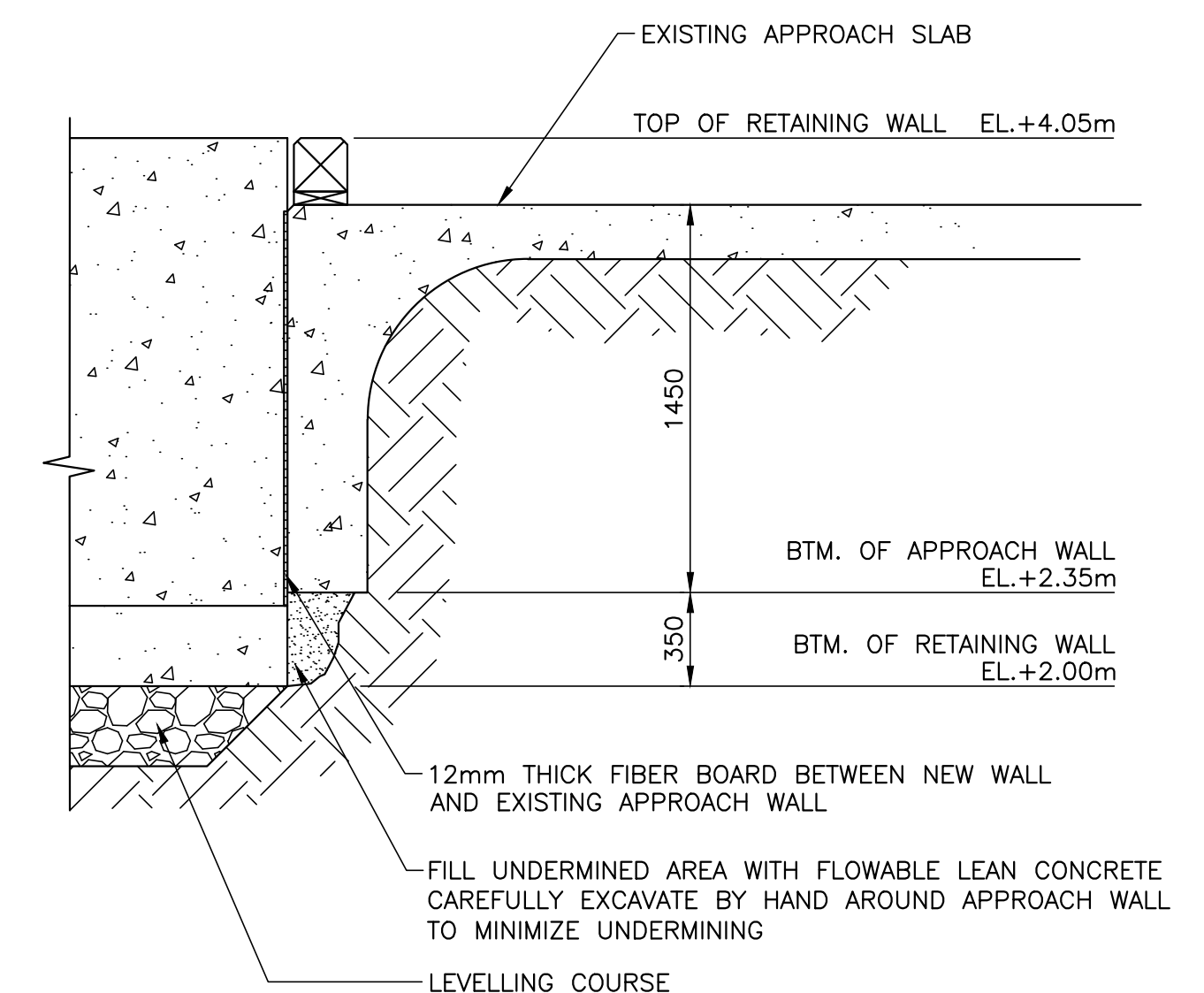
SECTION  
REINFORCED CONCRETE RETAINING WALL DETAIL  
SCALE: 1:20



PLAN



RETAINING WALL TO APPROACH DETAIL  
SCALE: 1:25



RETAINING WALL TO APPROACH SECTION  
SCALE: 1:25

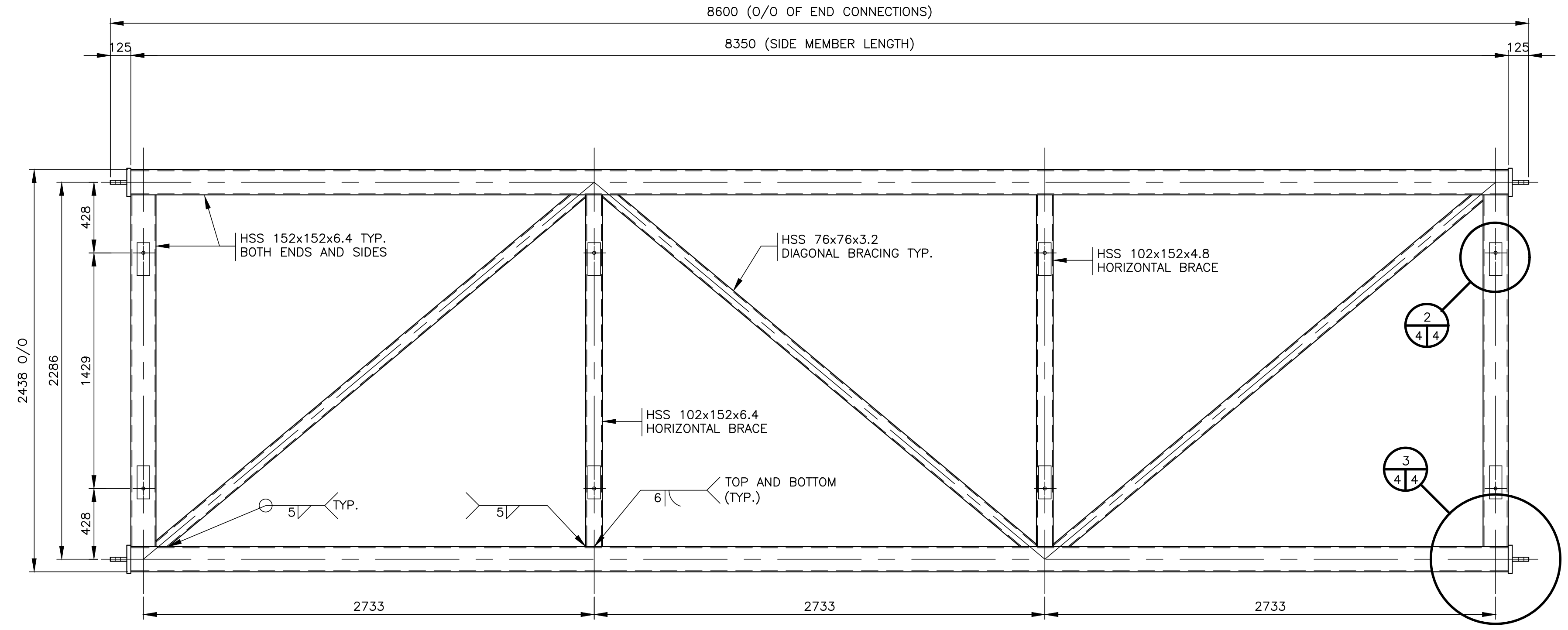
A	ISSUED FOR TENDER	Mar 31 2022
revisions		date
project		project

FLOATING WHARF INSTALLATION  
PUGWASH  
CUMBERLAND COUNTY  
NOVA SCOTIA

SITE SECTIONS &  
REINFORCED  
CONCRETE DETAILS

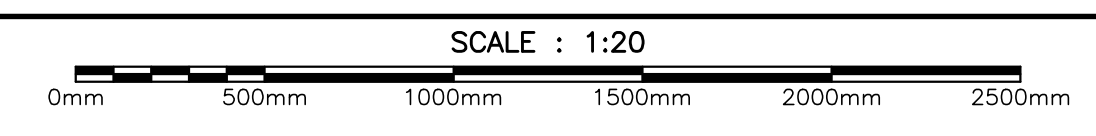
designed	D. FERGUSON	consp
date	FEBRUARY 2022	
drawn	J. PEPPER	dessiné
date	FEBRUARY 2022	
approved		approuvé
date		
Tender		Soumission

PWSC Project Manager Administrateur de projets TPSCG  
project number no. du projet  
**C2-00517**  
drawing no. no. du dessin  
**3 of 6**



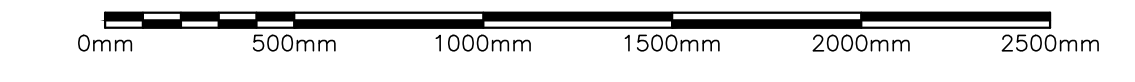
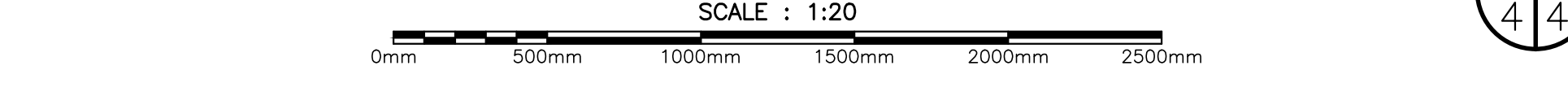
NOTES  
1. ALL MATERIALS SHALL BE GALVANIZED.  
2. FABRICATOR TO DETERMINE NUMBER AND SIZE OF VENT HOLES FOR GALVANIZING AND SHOW ON SHOP DRAWINGS.

PLAN - STEEL STRONG ARM

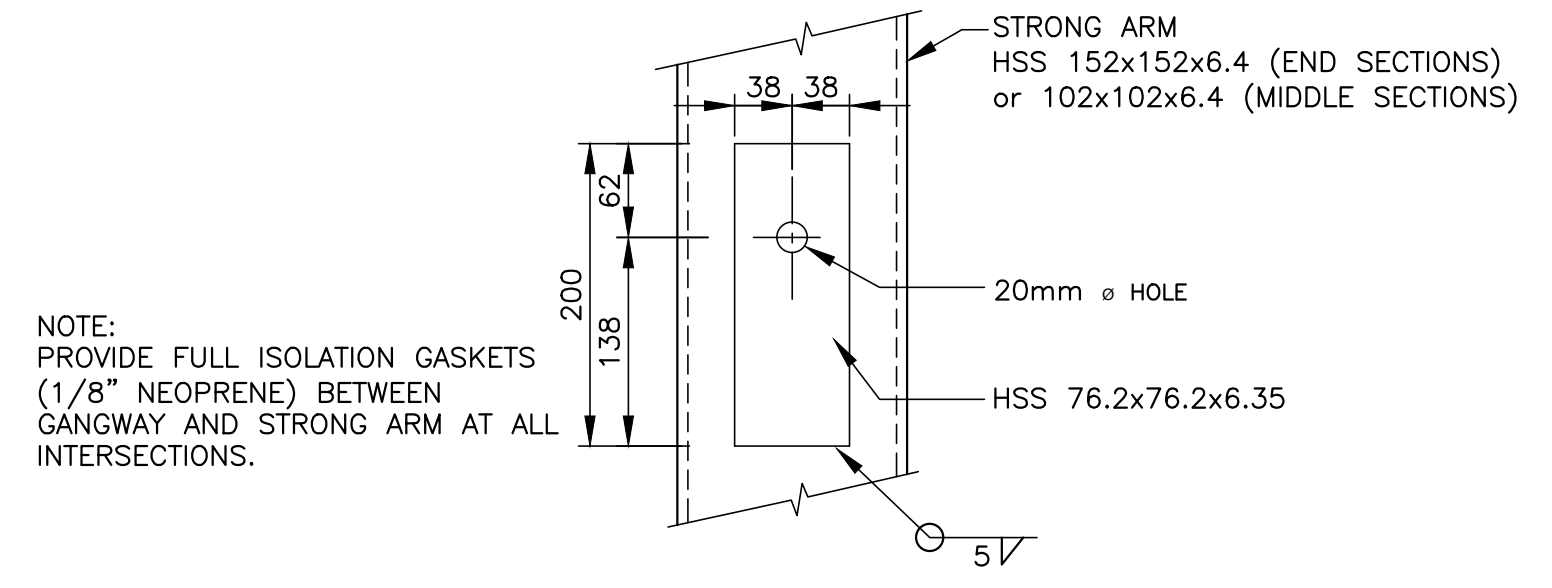


1  
3/4

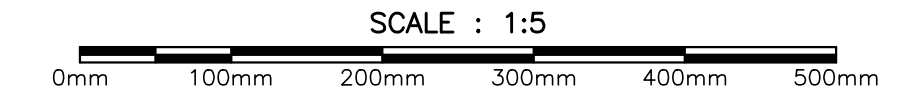
SECTIONAL PLAN - DOCK TO DOCK END CONNECTIONS



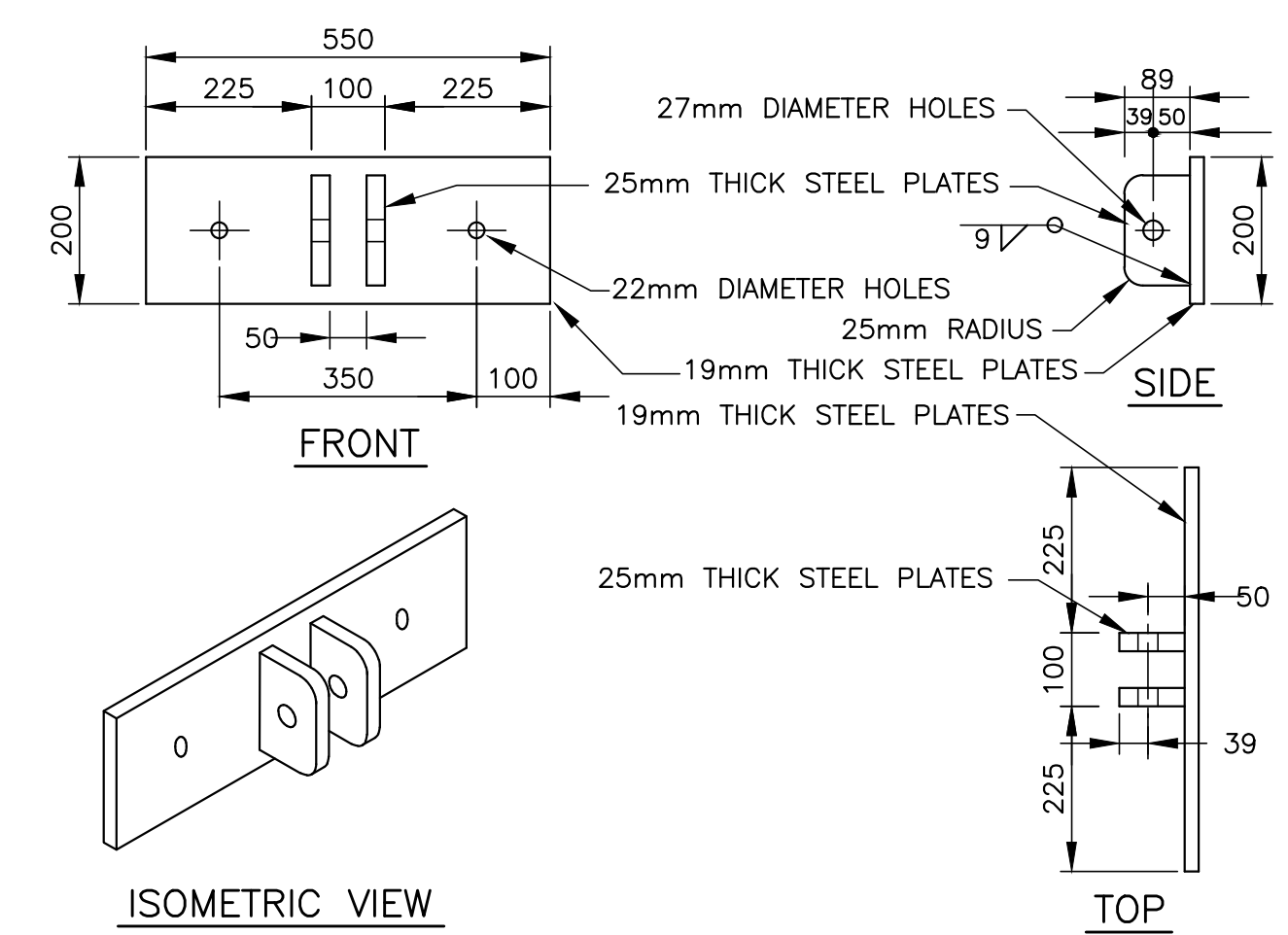
A  
4/4



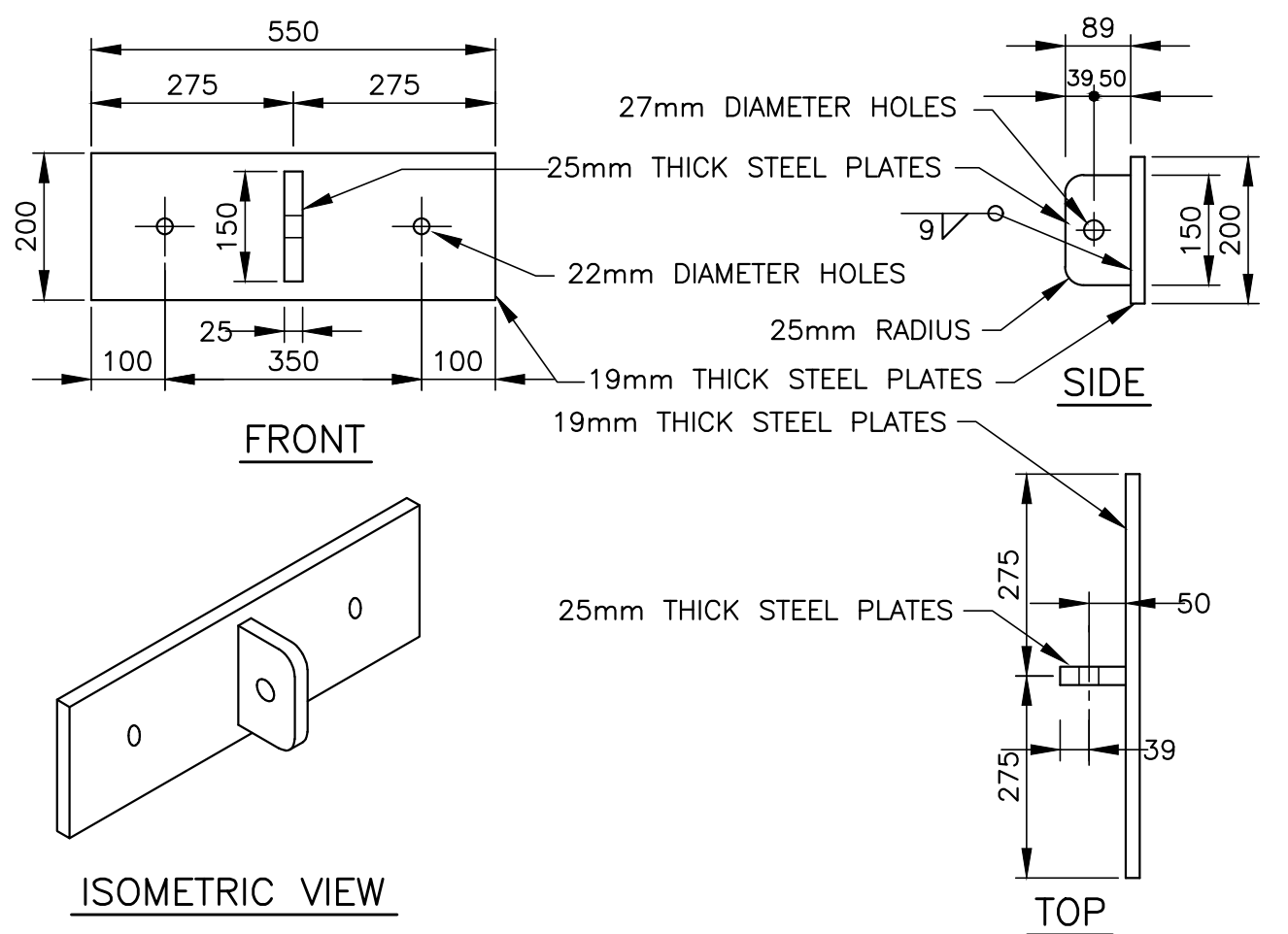
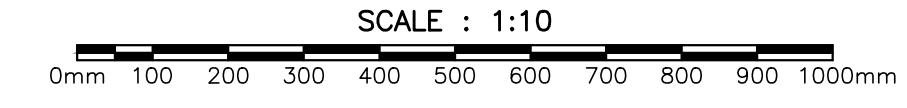
DETAIL - GANGWAY TO STRONG ARM CONNECTION (TYP.)



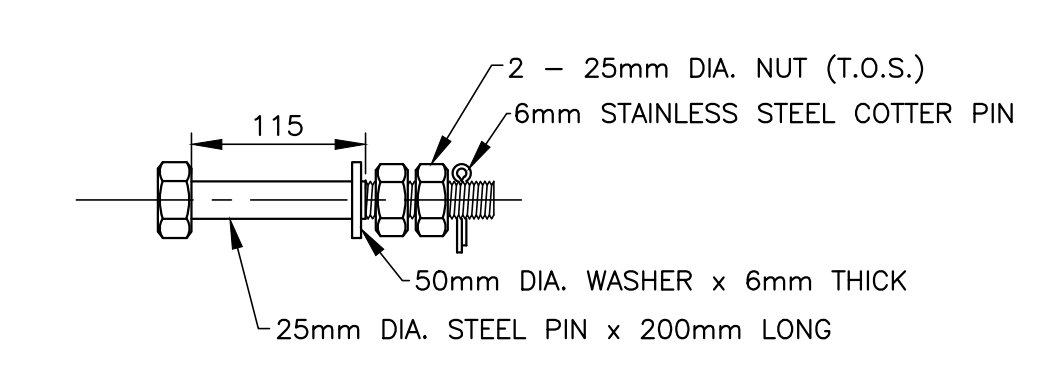
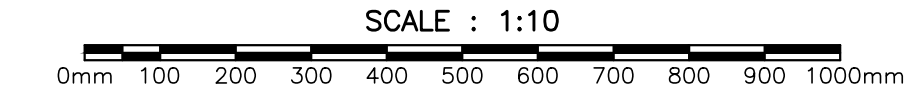
2  
4/4



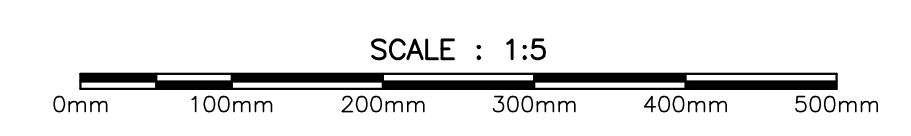
FLOAT CONNECTION PLATE  
FLOAT TO FLOAT (2 REQUIRED)



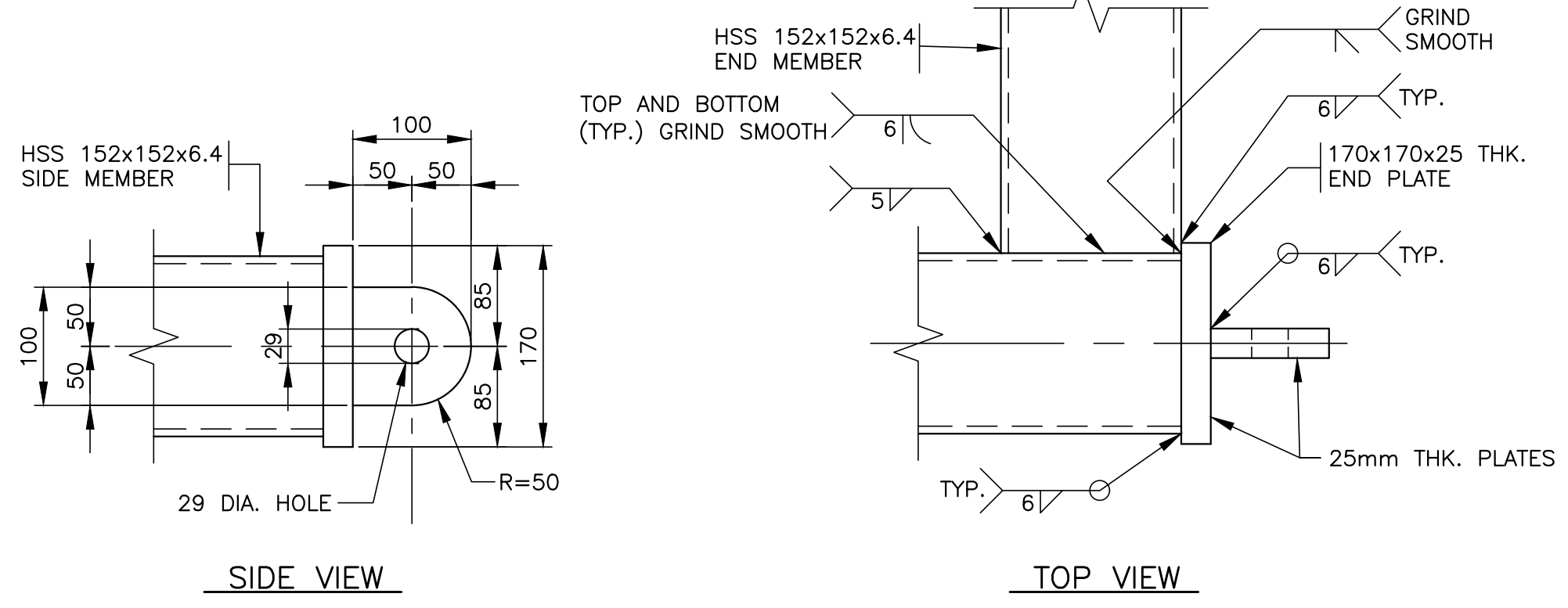
FLOAT CONNECTION PLATE  
FLOAT TO FLOAT (2 REQUIRED)



FLOAT CONNECTION BOLTS



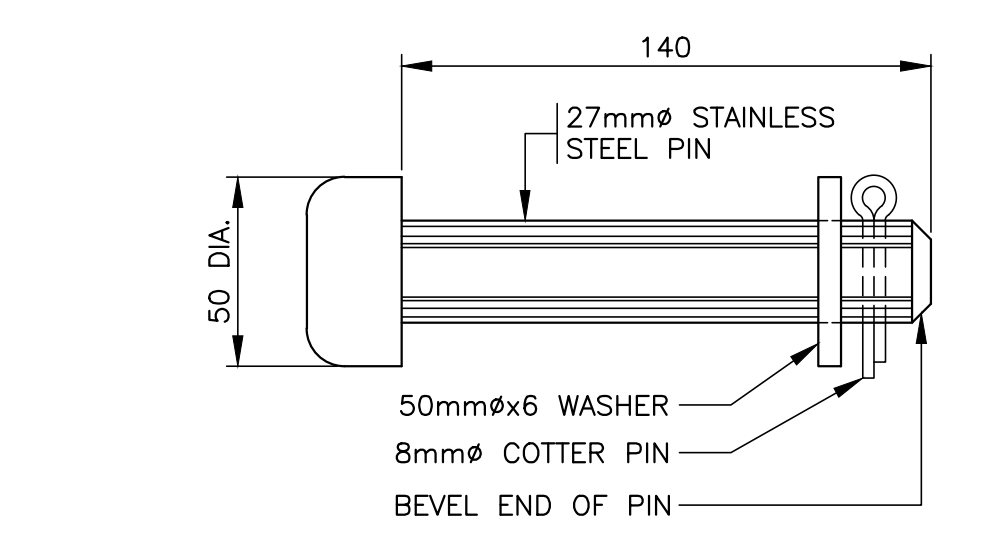
5  
4/4



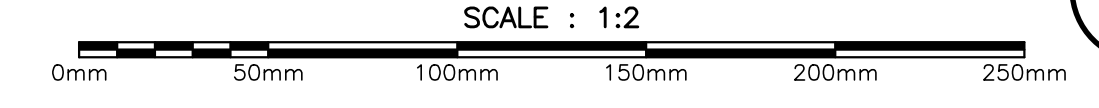
DETAIL - STRONG ARM END CONNECTION (TYP.)



3  
4/4

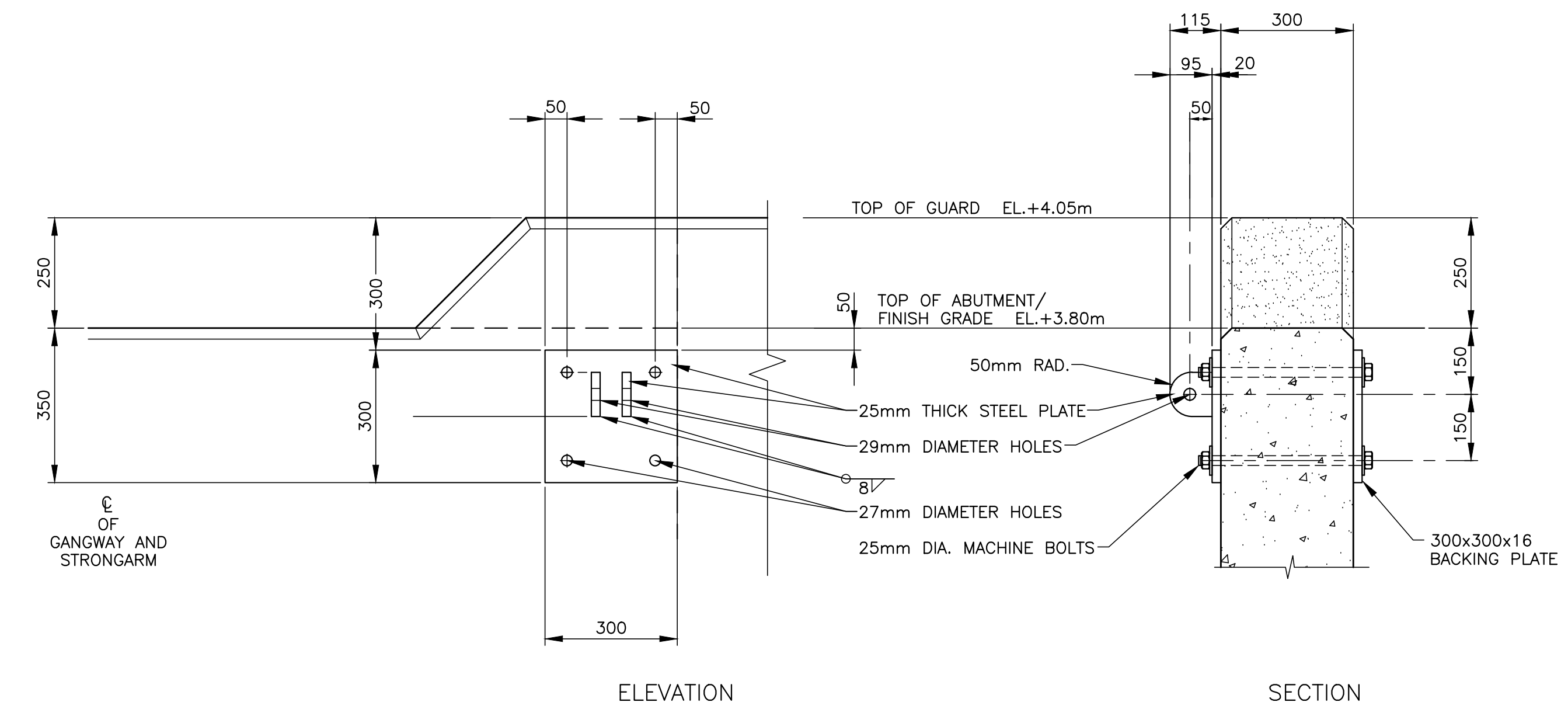


DETAIL - CONNECTION PIN (TYP.)



4  
4/4

STRONGARM ABUTMENT BRACKET DETAIL  
4 REQUIRED



ELEVATION

SECTION



6  
4/4

GENERAL NOTES

- DO NOT SCALE FROM DRAWING.
- CONTRACTOR MUST VERIFY ALL DIMENSIONS AND CONDITIONS ON SITE PRIOR TO PROCEEDING WITH ANY PORTION OF THIS WORK.
- ALL DIMENSIONS IN MILLIMETERS. ALL ELEVATIONS IN METERS.
- CONTRACTOR TO VERIFY AS-CONSTRUCTED DIMENSIONS OF VOID FOR BUOYANCY COMPARTMENTS BEFORE FABRICATION OF BUOYANCY COMPARTMENTS. GAP BETWEEN BUOYANCY COMPARTMENTS AND SURROUNDING TIMBERS TO BE NO GREATER THAN 25mm ON ALL SIDES.
- TIMBER DECKING TO BE DRESSED ONE SIDE TO ENSURE UNIFORM THICKNESS AND LEVEL WALKING SURFACE.

A	ISSUED FOR TENDER	Mar 31 2022
revisions		date
project		project

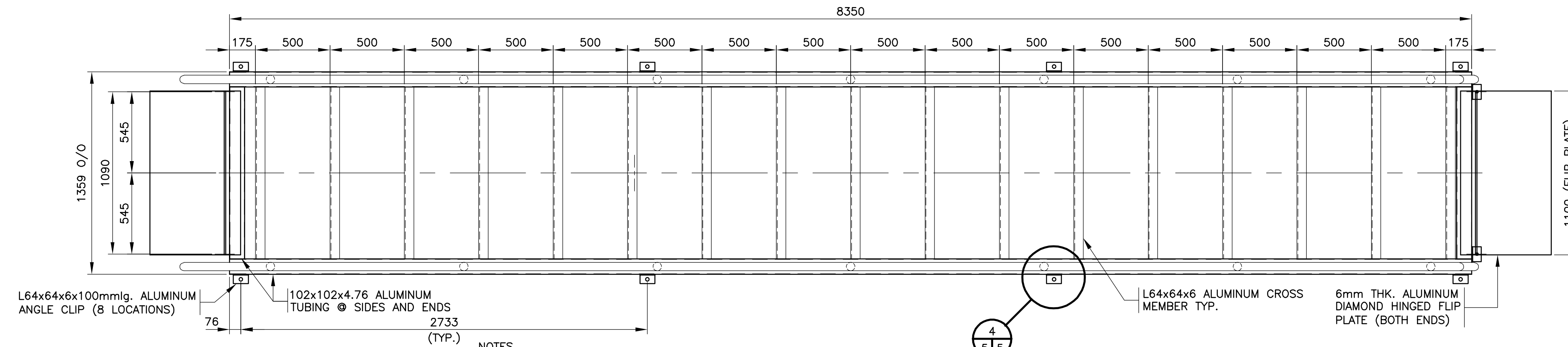
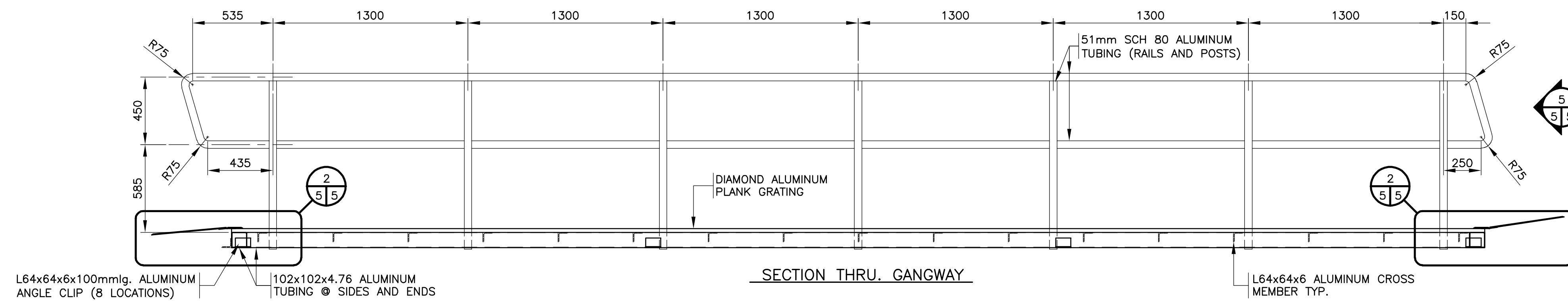
FLOATING WHARF INSTALLATION  
PUGWASH  
CUMBERLAND COUNTY  
NOVA SCOTIA

drawing design  
**NEW STEEL STRONG ARM AND CONNECTIONS PLAN, SECTION AND DETAILS**

designed D. FERGUSON	conçu
date FEBRUARY 2022	date
drawn J. PEPPER	dessiné
date FEBRUARY 2022	date
approved	approuvé
date	date
Tender	Submission

PWSCC Project Manager Administrateur de projets TPSCC  
project number no. du projet  
**C2-00517**

drawing no. no. du dessin  
**4 of 6**

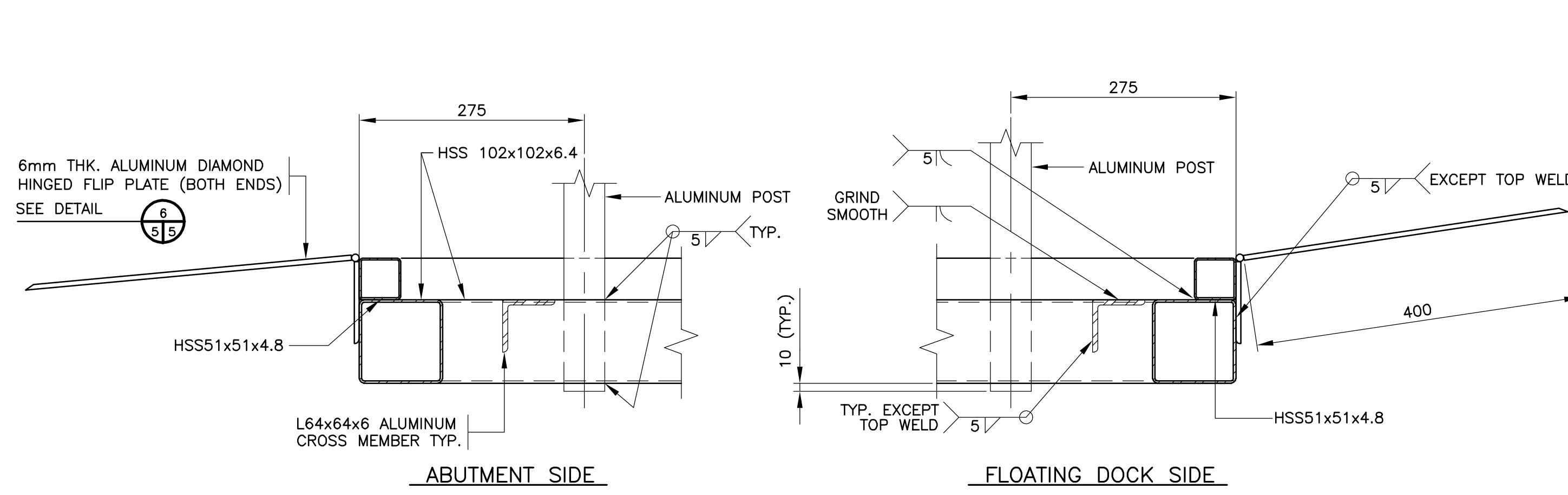


NOTES  
 1. TWO ALUMINUM GANGWAYS REQUIRED ONE EACH AT DOCK.  
 2. PROVIDE NEOPRENE ISOLATION GASKETS BETWEEN STEEL AND ALUMINUM AT ALL ANGLE CLIP CONNECTIONS.

PLAN - ALUMINUM GANGWAY

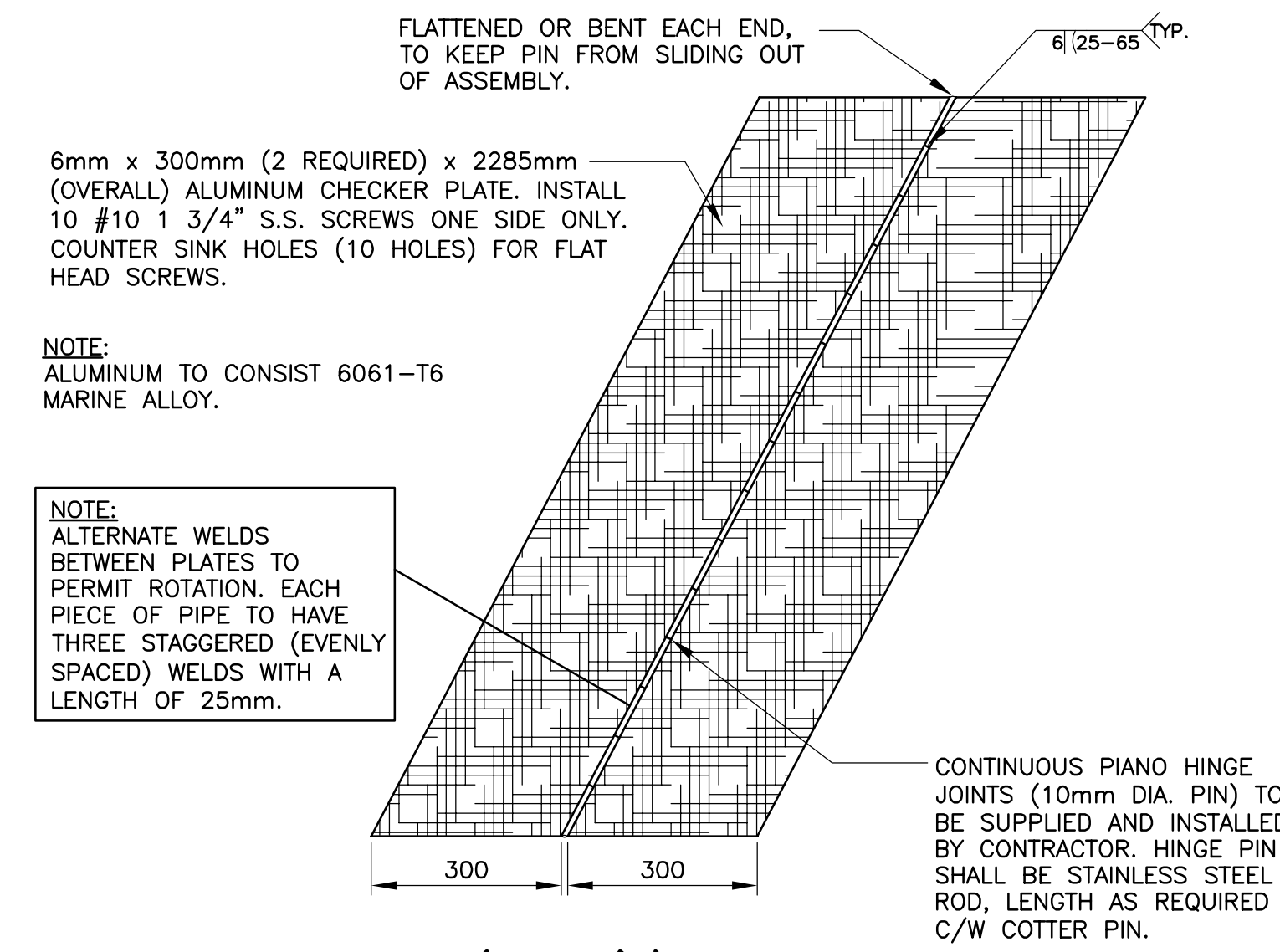
NOTE: GRATING NOT SHOWN IN THIS VIEW FOR CLARITY.

SCALE : 1:20



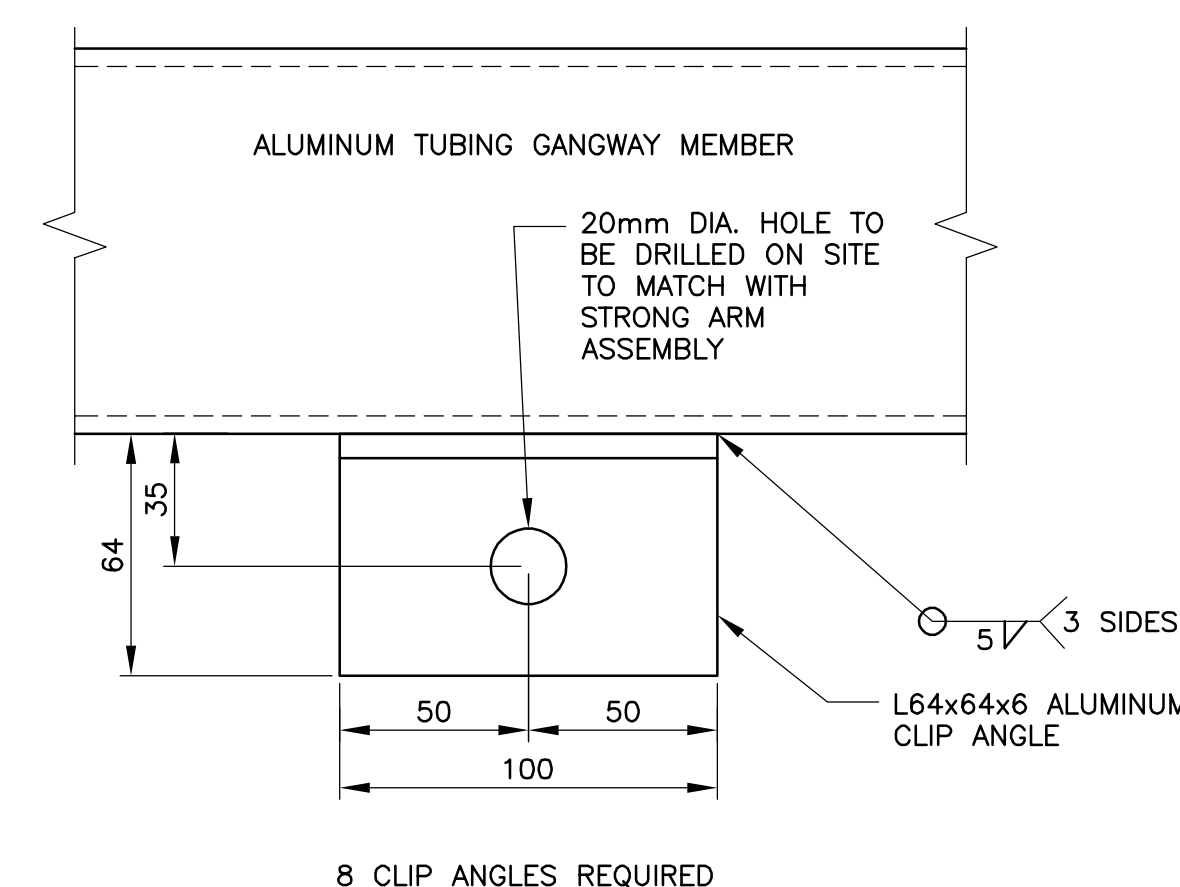
DETAIL @ ENDS OF GANGWAY (TYP.)

SCALE : 1:5



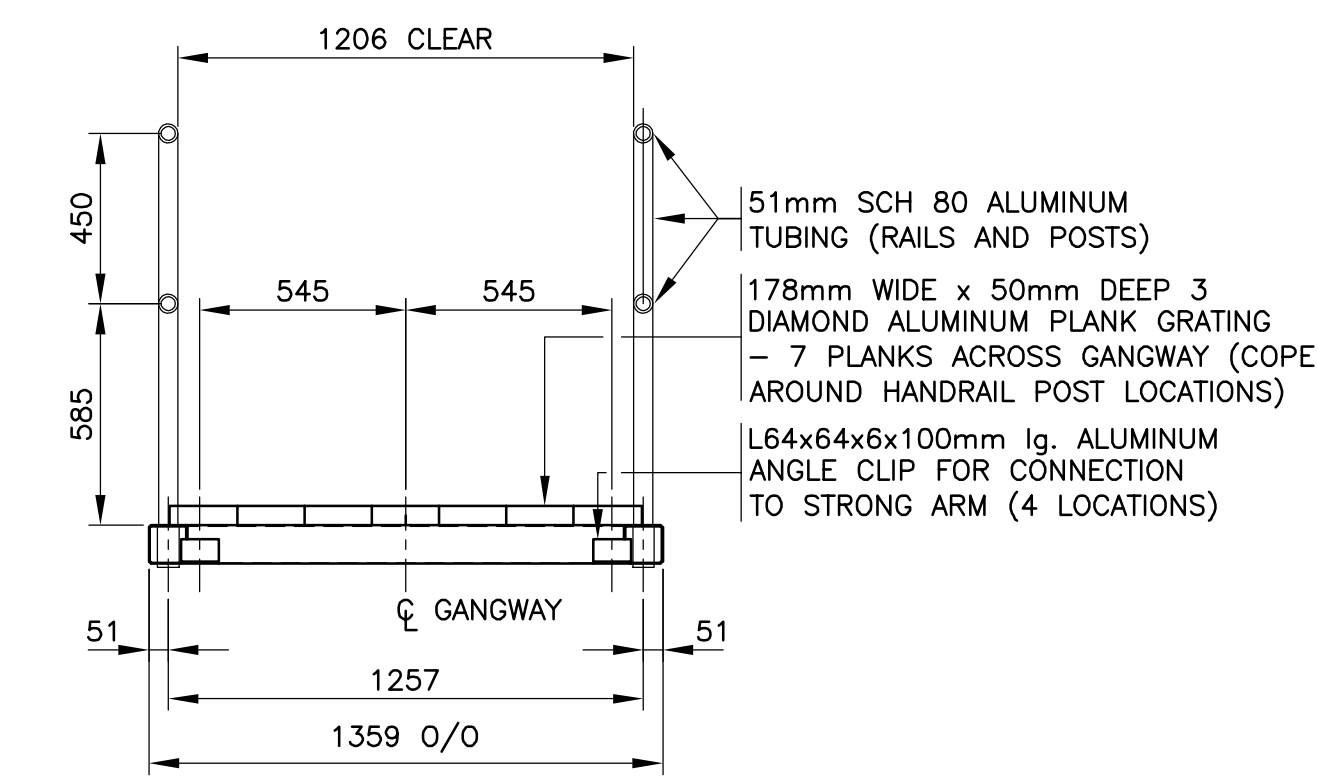
ALUMINUM FLOATING DOCK GAP PLATE

SCALE : 1:10



CLIP ANGLE DETAIL

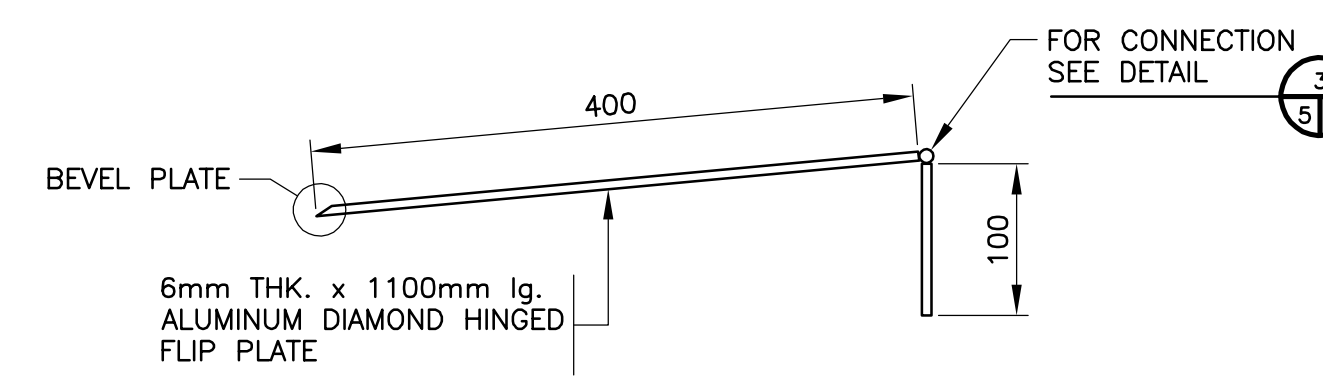
SCALE : 1:2



NOTE: HINGED FLIP PLATE @ END NOT SHOWN FOR CLARITY.

ELEVATION - END OF GANGWAY

SCALE : 1:20



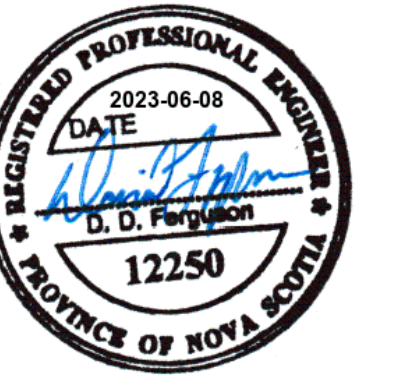
DETAIL - HINGED FLIP PLATE (TYP.)

SCALE : 1:5

GENERAL NOTES

- DO NOT SCALE FROM DRAWING.
- CONTRACTOR MUST VERIFY ALL DIMENSIONS AND CONDITIONS ON SITE PRIOR TO PROCEEDING WITH ANY PORTION OF THIS WORK.
- ALL DIMENSIONS IN MILLIMETERS. ALL ELEVATIONS IN METERS.
- CONTRACTOR TO VERIFY AS-CONSTRUCTED DIMENSIONS OF VOID FOR BUOYANCY COMPARTMENTS BEFORE FABRICATION OF BUOYANCY COMPARTMENTS. GAP BETWEEN BUOYANCY COMPARTMENTS AND SURROUNDING TIMBERS TO BE NO GREATER THAN 25mm ON ALL SIDES.
- TIMBER DECKING TO BE DRESSED ONE SIDE TO ENSURE UNIFORM THICKNESS AND LEVEL WALKING SURFACE. USE STAINLESS STEEL SCREWS INSTEAD OF NAILS FOR THE LAST THREE DECK BOARDS AT EACH END OF DOCKS TO ALLOW ACCESS TO DOCK CONNECTIONS.

Fisheries and Oceans Pêches et Océans  
 Canada  
 Small Craft Harbours Ports pour Petits Bateaux  
 Maritimes/Gulf Region Région des Maritimes/Golfe

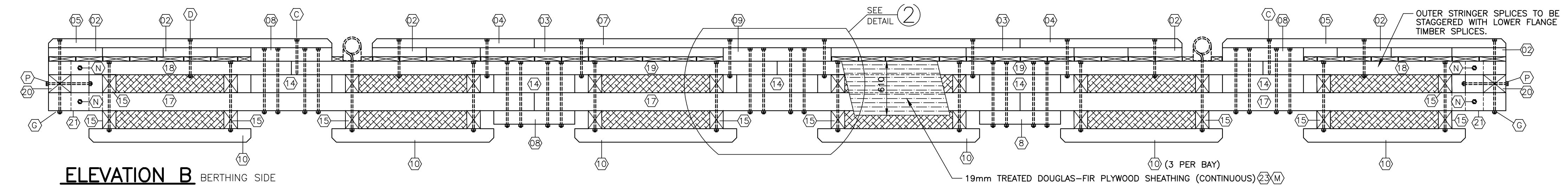


A	ISSUED FOR TENDER	Mar 31 2022
revisions		date
project		project

FLOATING WHARF INSTALLATION  
 PUGWASH  
 CUMBERLAND COUNTY  
 NOVA SCOTIA

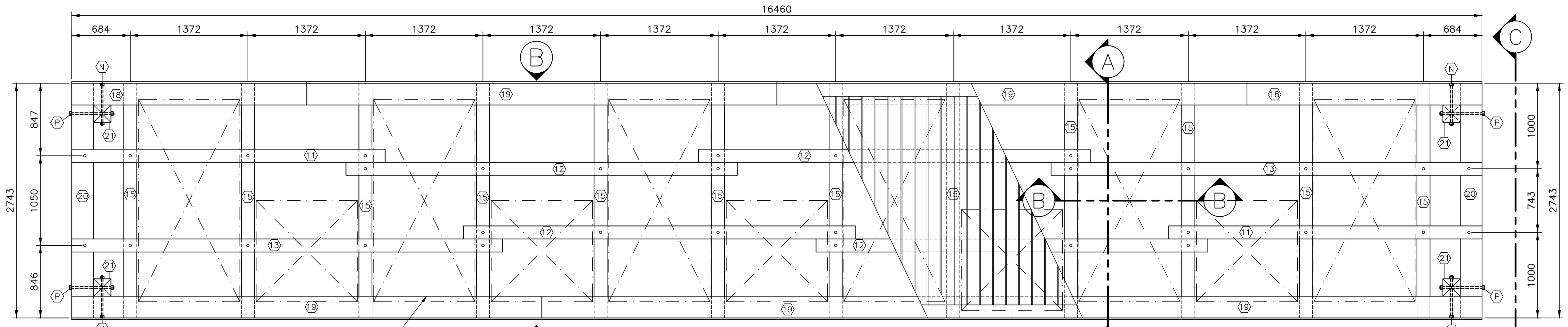
NEW ALUMINUM  
 GANGWAY  
 PLAN, SECTIONS  
 AND DETAILS

designed D. FERGUSON	conçu
date FEBRUARY 2022	
drawn J. PEPPER	dessiné
date FEBRUARY 2022	
approved	approuvé
date	
Tender	Soumission
PWOSC Project Manager	Administrateur de projets TPSCG
project number C2-00517	no. du projet
drawing no. 5 of 6	no. du dessin

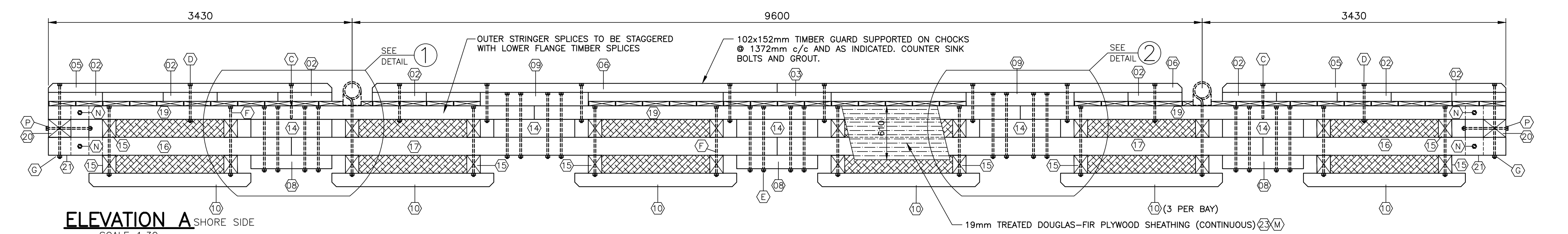


ELEVATION B BERTHING SIDE

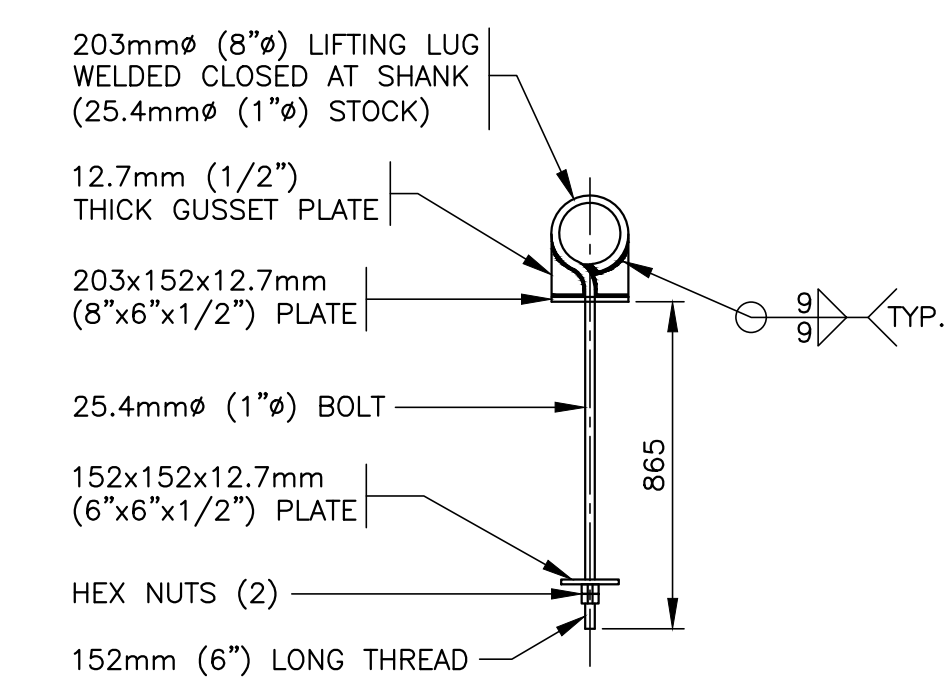
- NOTES:
1. ALL TIMBER IS PRESSURE TREATED TO CSA-M1985, TABLE 1, WATER BOURNE PRESERVATIVES-C.C.A.
  2. ALL HARDWARE ITEMS INCLUDING MACHINE BOLTS, DRIFT BOLTS, NUTS, WASHERS, SPIKES, LIFTING LUGS, ETC. ARE TO BE FABRICATED FROM MEDIUM OR MILD STEEL CONFORMING TO ASTM-A307-80.
  3. ALL HARDWARE SUPPLIED BY CONTRACTOR. ITEMS ARE TO BE HOT DIP GALVANIZED WITH A MINIMUM COATING OF 610g/m CONFORMING TO CSA-G164 LATEST EDITION.
  4. BUOYANCY BILLET: TO BE SUPPLIED BY THE CONTRACTOR, TO BE APPROVED BY DEPARTMENT REPRESENTATIVE.
  5. BUOYANCY BILLET QUANTITIES AND SIZES FOR EACH FLOAT No. 1 & No. 2: 6-600x1200x2400 (2'x4'x8') AND 5-600x1200x1200 (2'x4'x4')
  6. IF FLOATING WHARVES ARE BOOMED INTO HARBOUR BASIN, A SPREADER BAR (MIN. 27 FEET LONG) IS REQUIRED. ANY DAMAGE AS THE RESULT OF NO SPREADER USED WILL BE PAID BY THE OPERATOR.



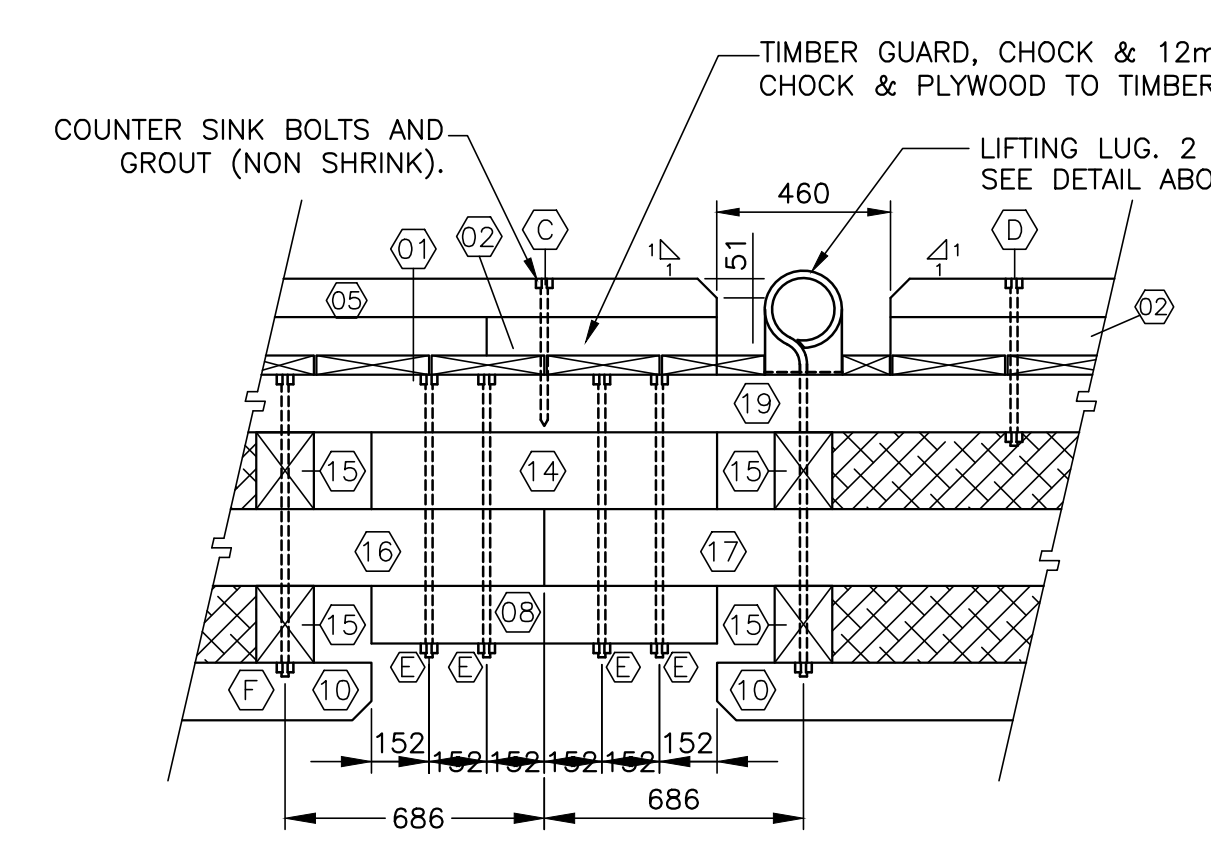
GENERAL ARRANGEMENT (PLAN VIEW) SCALE 1:30



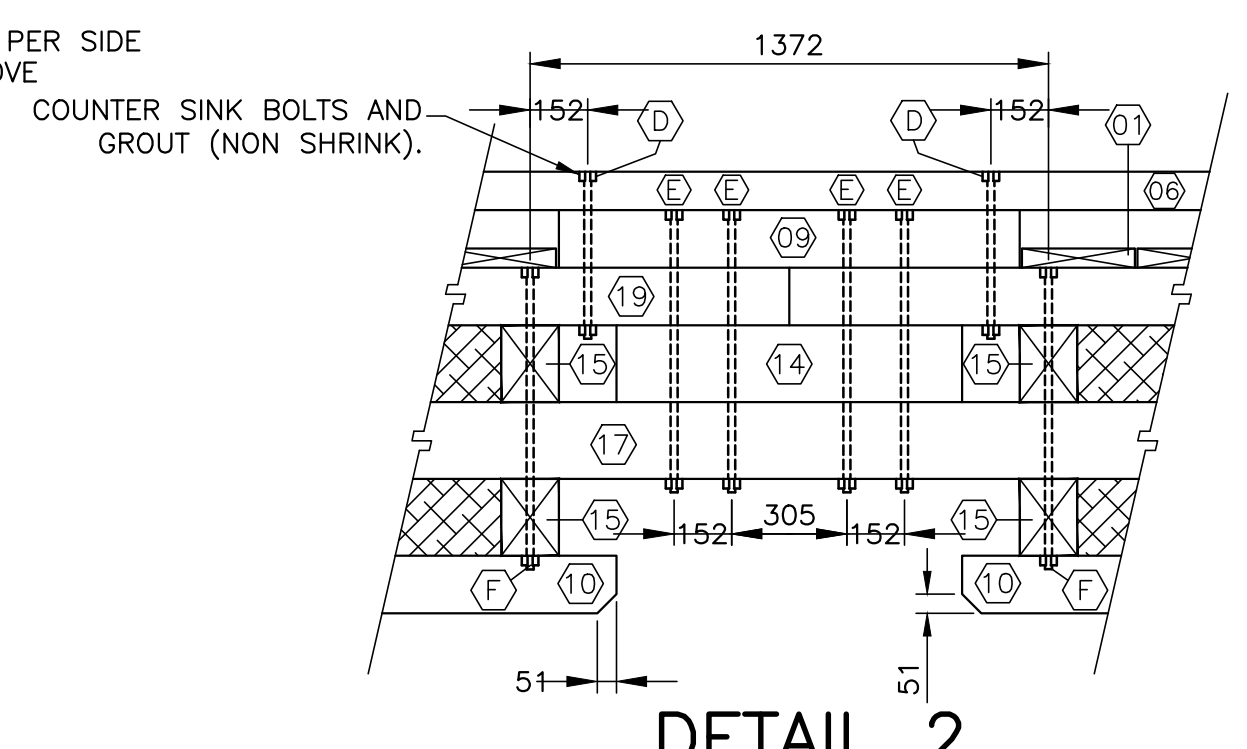
ELEVATION A SHORE SIDE SCALE 1:30



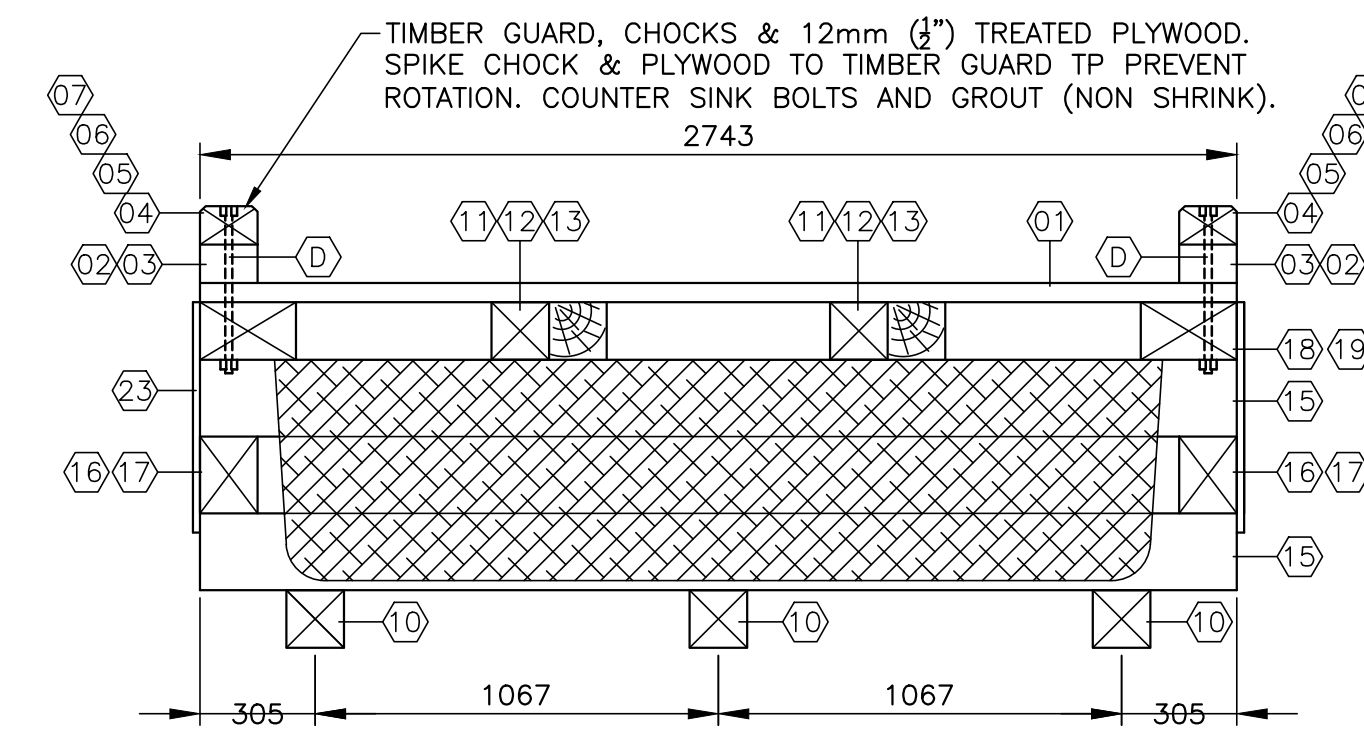
LIFTING LUG DETAIL



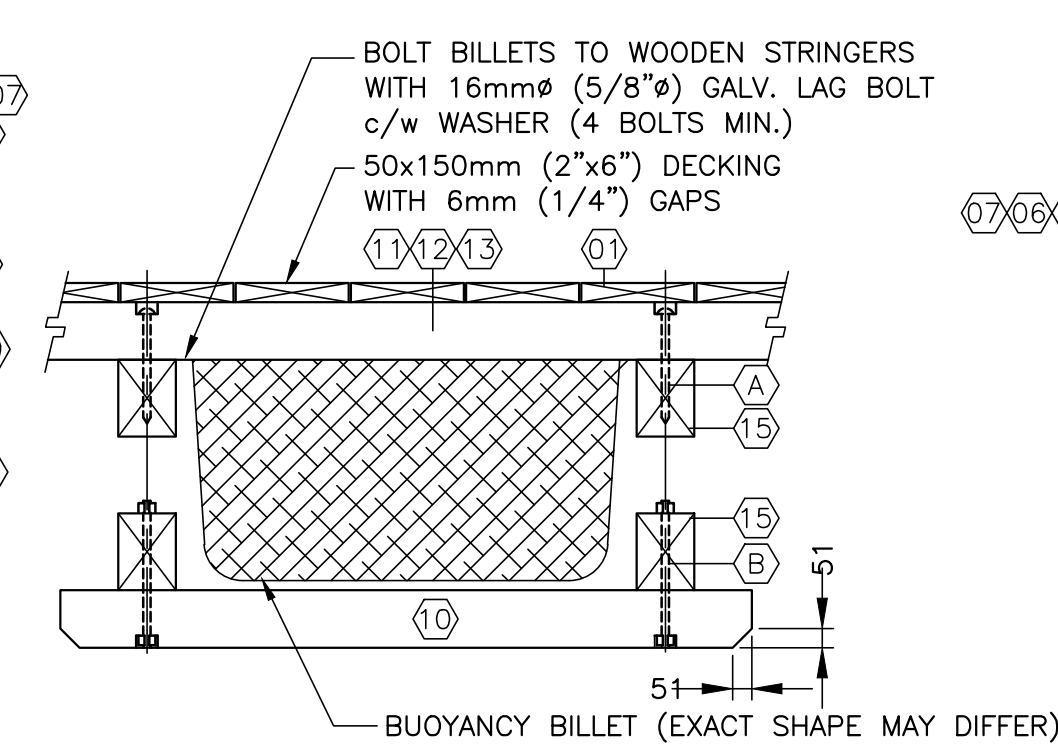
DETAIL 1 SCALE: 1:20



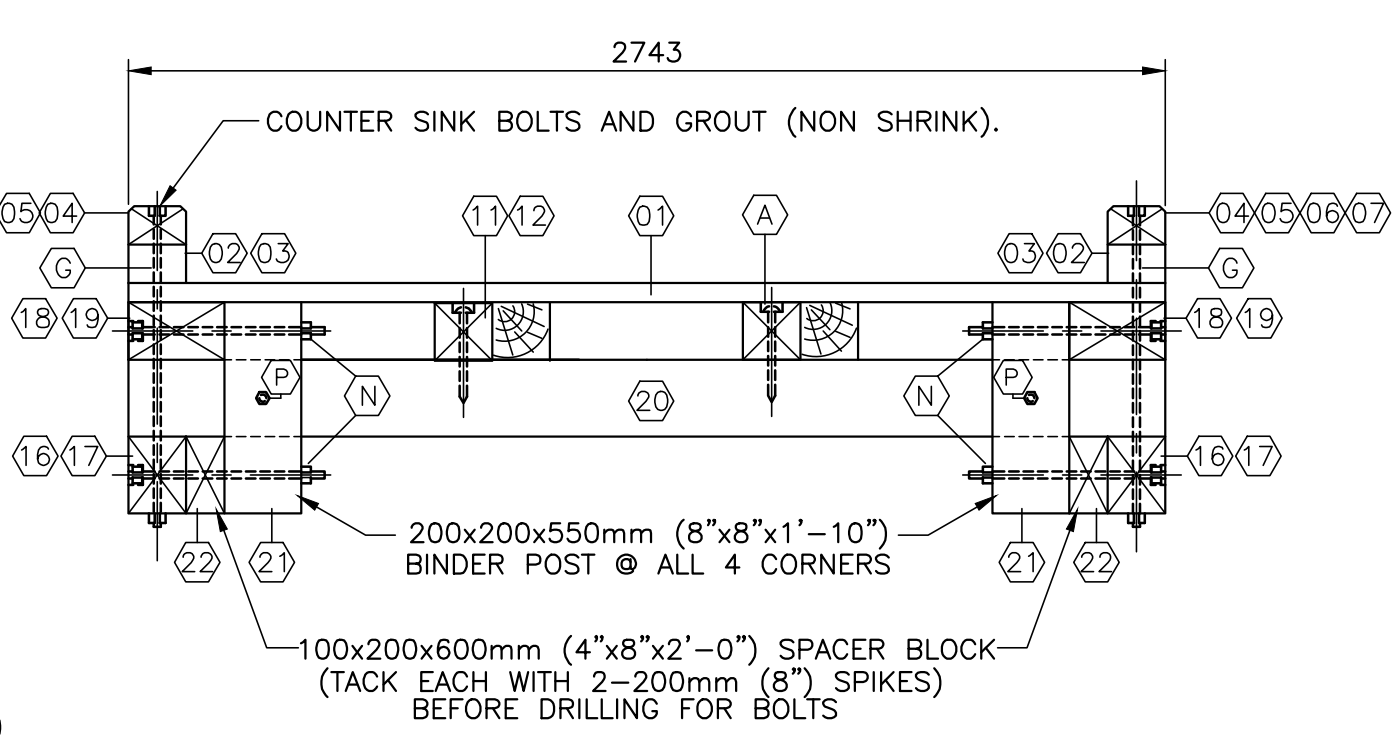
DETAIL 2 SCALE: 1:20



SECTION A-A SCALE: 1:20



SECTION B-B SCALE: 1:20



SECTION C-C SCALE: 1:20

BILL OF MATERIALS (QUANTITY FOR ONE (1) FLOATING WHARF)

ITEM No.	HARDWARE DESCRIPTION	QUANTITY	ITEM No.	TREATED TIMBER DESCRIPTION	QUANTITY
A	12x250mm (1/2"x10") DRIFT BOLT	34	01	50x140x2740mm (2"x6"x9'-0") DECKING	120
B	19x400mm (3/4"x16") M.B. c/w 100mm (4") THREAD	36	02	102x152x610mm (4"x6"x2'-0") CHOCKING	14
C	19x400mm (3/4"x16") LAG SCREW	4	03	102x152x1220mm (4"x6"x4'-0") CHOCKING	3
D	19x450mm (3/4"x18") M.B. c/w 100mm (4") THREAD	20	04	102x152x1830mm (4"x6"x6'-0") CHAMFERED TIMBERGUARD	2
E	19x750mm (3/4"x30") M.B. c/w 100mm (4") THREAD	40	05	102x152x3200mm (4"x6"x10'-6") CHAMFERED TIMBERGUARD	4
F	19x800mm (3/4"x32") M.B. c/w 150mm (4") THREAD	20	06	102x152x4572mm (4"x6"x15'-0") CHAMFERED TIMBERGUARD	2
G	19x850mm (3/4"x34") M.B. c/w 150mm (4") THREAD	4	07	102x152x5986mm (4"x6"x18'-0") CHAMFERED TIMBERGUARD	1
H	LIFTING LUG c/w HEX NUT & WASHERS (SEE DETAIL)	4	08	152x152x914mm (6"x6"x3'-0") CHOCK BLOCK	7
J	19mm (3/4") HEX NUT-TAPPED OVERSIZE TDS	132	09	152x152x1220mm (6"x6"x4'-0") CHOCK/SPLICE BLOCK	3
K	6mmx75mm (1/4"x3") WASHER c/w 22mm (7/8") HOLE	268	10	152x152x1830mm (6"x6"x6'-0") SKID (CHAMFER BOTH ENDS)	18
L	101.6mm (4") COMMON GALVANIZED NAILS	690	11	152x152x3658mm (6"x6"x12'-0") STRINGER	2
M	76.2mm (3") STAINLESS STEEL SCREW (OVERSIZE HEAD)	250	12	152x152x4572mm (6"x6"x15'-0") STRINGER	2
N	19x500mm (3/4"x20") M.B. c/w 100mm (4") THREAD	8	13	152x152x5030mm (6"x6"x16'-6") STRINGER	4
P	19x600mm (3/4"x24") M.B. c/w 100mm (4") THREAD	4	14	152x203x914mm (6"x8"x3'-0") SPLICE BLOCK	10
			15	152x203x2743mm (6"x8"x9'-0") CROSS TIE	24
			16	152x229x2743mm (6"x9"x9'-0") FLANGE	2
			17	152x229x5486mm (6"x9"x18'-0") FLANGE	5
			18	152x254x2743mm (6"x10"x9'-0") OUTER STRINGER	2
			19	152x254x5486mm (6"x10"x18'-0") OUTER STRINGER	5
			20	203x305x2743mm (8"x12"x9'-0") END CROSS TIE	2
			21	203x203x560mm (8"x8"x1'-10") BINDER POST	4
			22	102x203x610mm (4"x8"x2'-0") SPACER BLOCK	4
			23	19x1219x2438mm (3/4"x4'-0"x8'-0") DOUGLAS-FIR TREATED PLYWOOD	7

A	ISSUED FOR TENDER	Mar 31 2022
revisions		date
project		project
<b>FLOATING WHARF INSTALLATION PUGWASH CUMBERLAND COUNTY NOVA SCOTIA</b>		
drawing		design
<b>NEW FLOAT ASSEMBLY GENERAL ARRANGEMENT PLAN, SECTIONS AND DETAILS</b>		
designer	D. FERGUSON	conçu
date	FEBRUARY 2022	
drawn	J. PEPPER	dessiné
date	FEBRUARY 2022	
approved		approuvé
date		
Tender		Soumission
PWOSC Project Manager	Administrateur de projets TP50C	
project number		no. du projet
<b>C2-00517</b>		
drawing no.		no. du dessin
<b>6 of 6</b>		